



## 175/5 Wulumay Close Rozelle NSW

3  2  2 

Featuring meticulous & sleek interiors throughout this top floor apartment of house like proportions takes in sparkling northerly harbour views toward Cockatoo, Snapper & Spectacle Islands.

Found within the prized 'Balmain Cove' harbourfront complex surrounded by manicured gardens with resort like amenities and a marina facility for the boating enthusiast, this magnificent property is located just a moments stroll from Darling Street's cafes & eateries, wine bars, boutique shops & express CBD public transport.

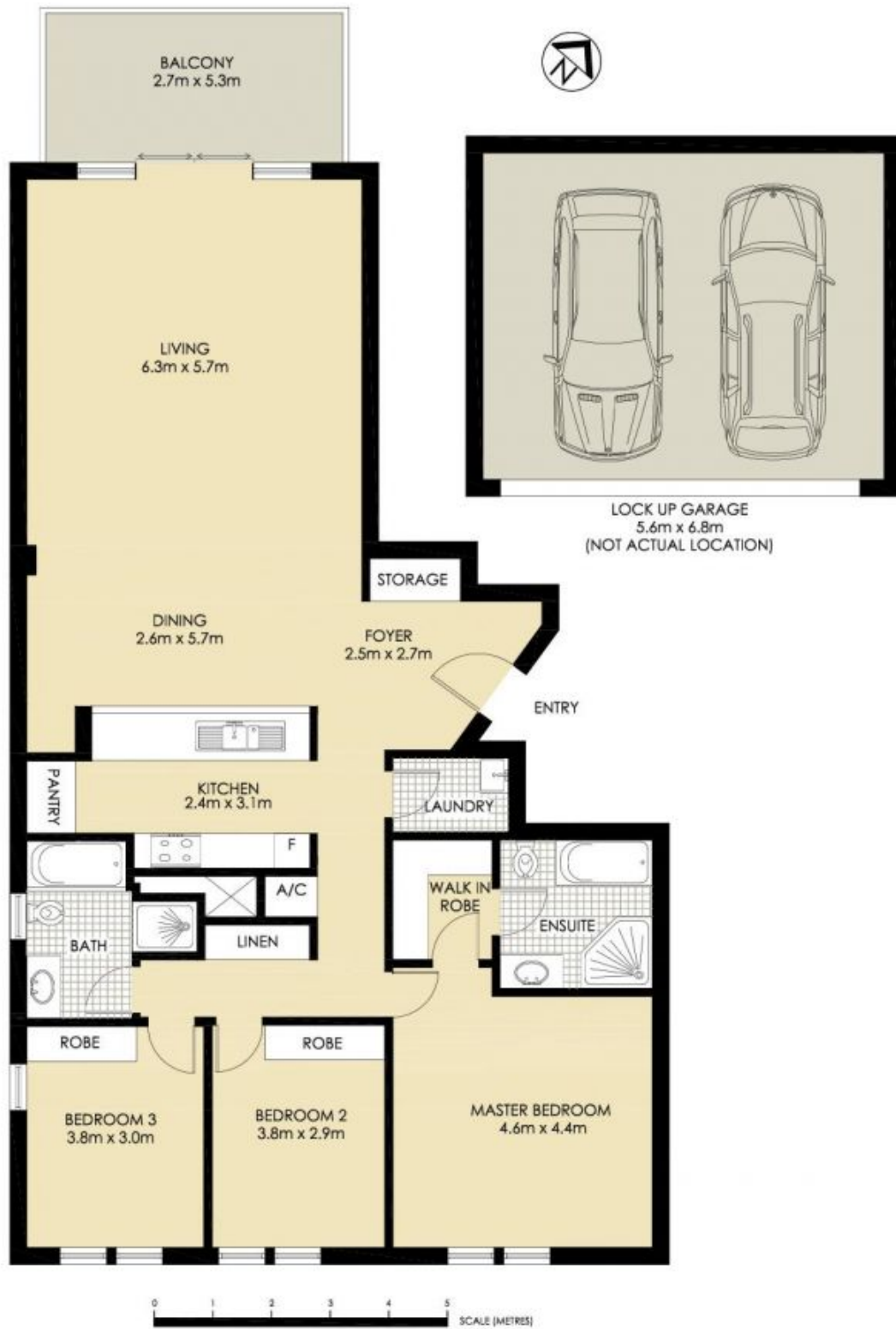
Property features include;

- Spacious open plan dining & living area that flows onto a large sun-filled north facing balcony with stunning harbour views

**Price** : SOLD OFF MARKET \$2,600,000  
**Land Size** : 206 sqm  
**View** : <https://www.balmainrealty.com/1P2073>



**Scott Robertson**  
**(02) 9818 8888**



## ROZELLE 175/5 WULUMAY CLOSE "The Escarpments" - Balmain Cove

\*PLANS SHOWN ONLY INDICATIVE OF LAYOUT. DIMENSIONS ARE APPROXIMATE.