

## Level 4/30 Warayama Place Rozelle NSW

1 🛏 1 🚿 1 🚗

Spacious & Modern 1 Bedroom Apartment in popular Balmain Shores with NEW paint and NEW carpet throughout

**Price** : \$600 per week

**View** : <https://www.balmainrealty.com/1P2118>

### PROPERTY FEATURES:

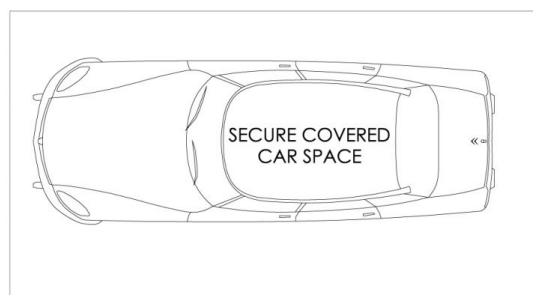
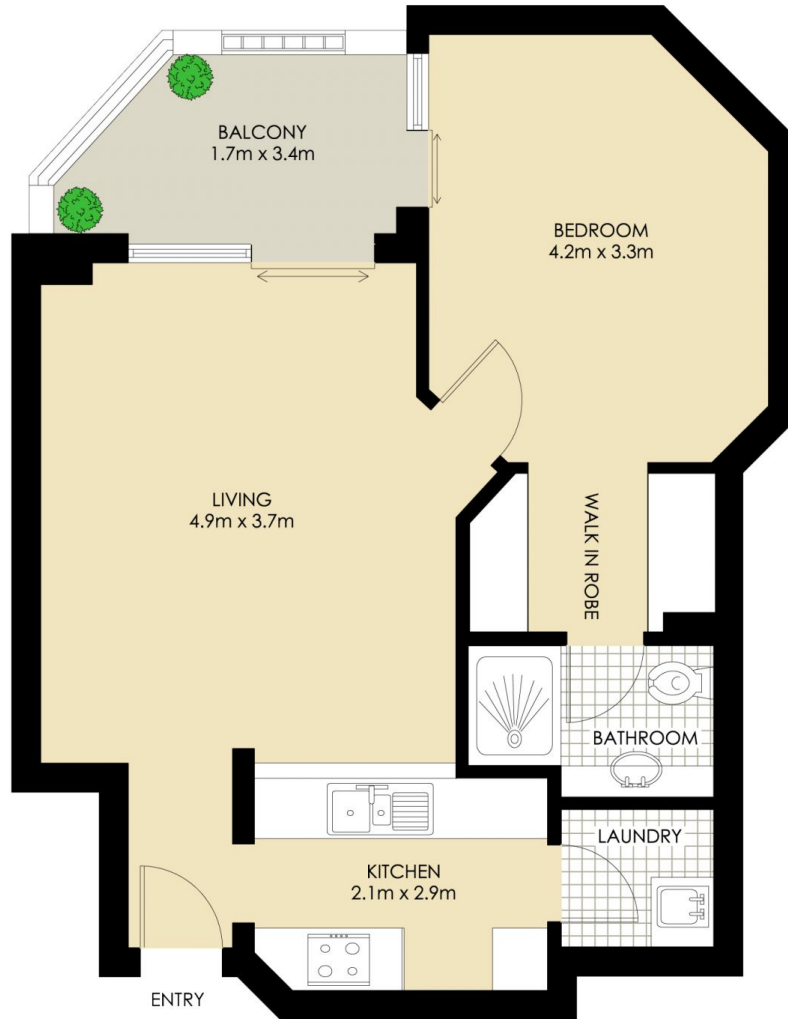
- New paint and New carpet throughout
- Light & spacious open plan living that leads onto a sunny & private balcony
- Functional kitchen featuring granite benchtops, pantry, gas cooktop, oven, rangehood and dishwasher
- Large bedroom featuring en-suite bathroom, walk-in wardrobes and direct access onto balcony; Flyscreen
- Secure undercover car space
- Separate internal laundry with dryer



**Jaime Wallace**  
(02) 9818 8888

### LIFESTYLE FEATURES:

- Approx 3.8km from the QVB in the Sydney CBD with



(NOT ACTUAL LOCATION)

## ROZELLE

### "Crestview" - Balmain Shores



\*PLANS SHOWN ONLY INDICATIVE OF LAYOUT. DIMENSIONS ARE APPROXIMATE.