



Level 2/26 Warayama Place Rozelle NSW

1 1 1

Executive 1 Bedroom Apartment with Parking in the Popular Balmain Shores Complex

PROPERTY FEATURES:

- Spacious open plan lounge/dining
- Sunny balcony with northerly aspect
- Good sized kitchen with gas cooktop with rangehood & dishwasher
- Large bedroom with walk-through wardrobes, en-suite bathroom and direct access onto balcony
- Split system air-conditioning in lounge room
- Separate internal laundry with clothes dryer
- Secure undercover car space with direct lift access to apartment level

LIFESTYLE FEATURES:

- Access to the Balmain Shores facilities including indoor

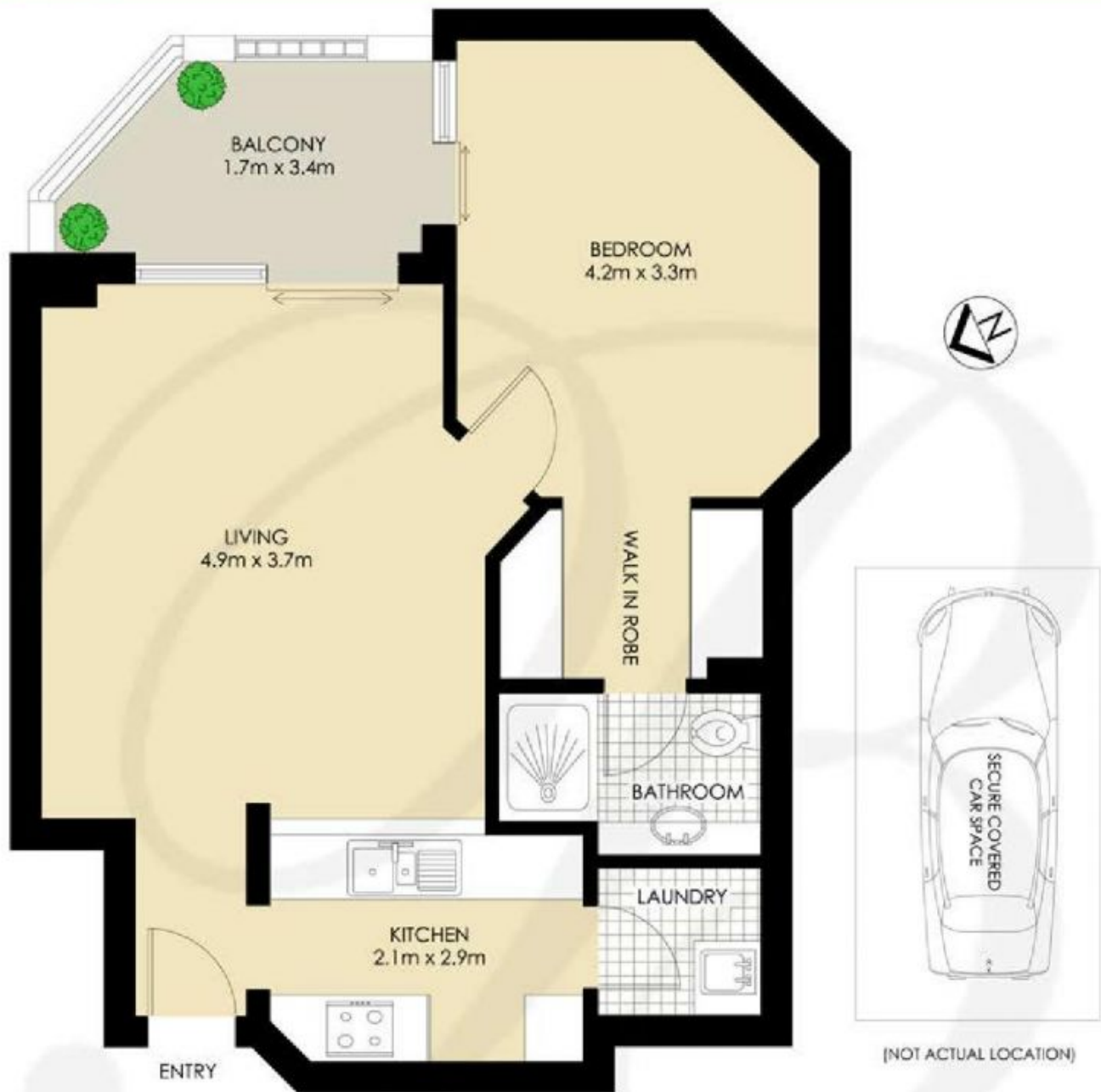
Price : \$575 per week
Building Size : 73 sqm
View : <https://www.balmainrealty.com/1P2125>



Jenny Chen-Robertson
(02) 9818 8888



Jaime Wallace
(02) 9818 8888



ROZELLE
203/28 WARAYAMA PLACE
"Crestview" - Balmain Shores



*PLANS SHOWN ONLY INDICATIVE OF LAYOUT. DIMENSIONS ARE APPROXIMATE.