



108/6 Yara Avenue Rozelle NSW

1 1

Situated in the highly sought after 'Balmain Shores' complex, this privately positioned freshly renovated studio apartment is perfect for those wanting unbeatable convenience to local eateries, express city transport & the harbour foreshore.

An excellent opportunity for first home buyers or investors looking to secure a renovated apartment in one of Sydney's premiere locations. Estimated rental return of \$470 - \$500 p/w

Property features include;

- Freshly painted interiors, new carpet & slimline roller blinds
- Spacious open plan layout that opens onto a private sun-drenched north facing balcony

Price : SOLD \$587,500
Land Size : 41 sqm
View : <https://www.balmainrealty.com/1P2242>



Scott Robertson
 (02) 9818 8888

PROPERTY DETAILS

AREA

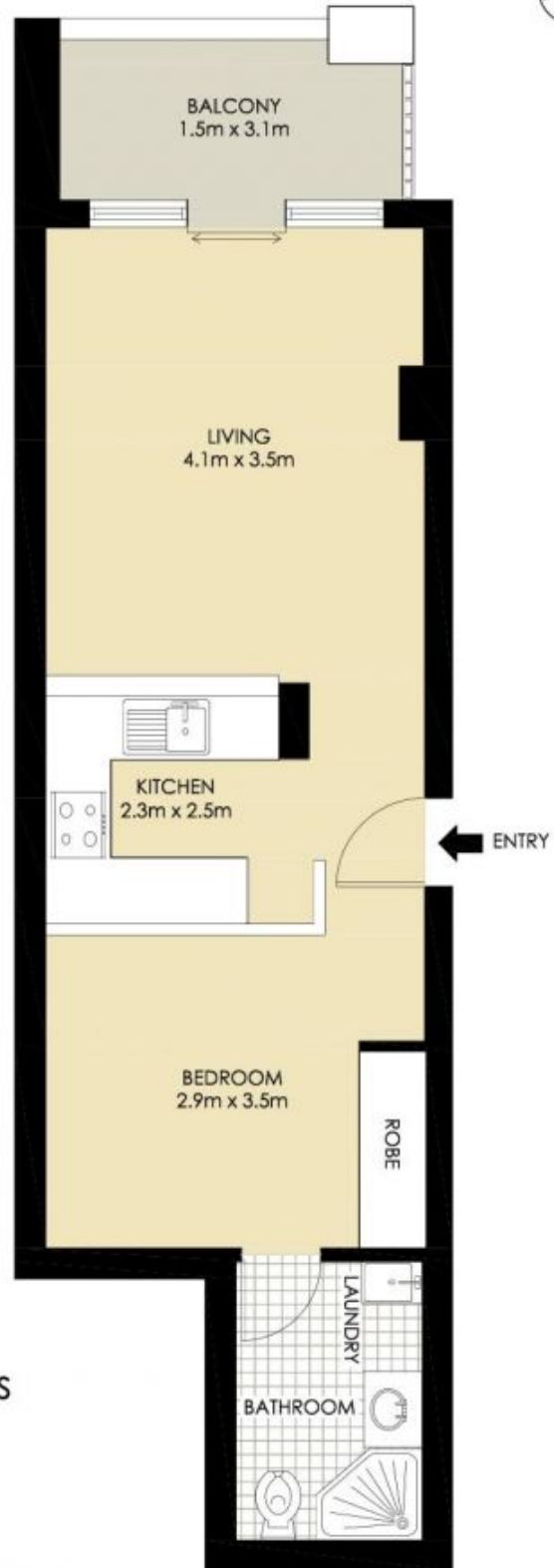
Total	41sqm
Internal	37sqm
Balcony	4sqm

OUTGOINGS

Strata	\$941pq
Council	\$290pq
Water	\$172pq

INSPECT

As advertised or by appointment



ROZELLE
108/6 YARA AVENUE
"The Pinnacle" - Balmain Shores



*PLANS SHOWN ONLY INDICATIVE OF LAYOUT. DIMENSIONS ARE APPROXIMATE.

BALMAIN Realty

1300 REALTY
9818 8888
balmainrealty.com