



Level 3/28 Warayama Place Rozelle NSW

1 1 1

Spacious & Modern 1 Bedroom Apartment with Polished Floorboards

Price : Leased! \$580 per week

View : <https://www.balmainrealty.com/1P2250>

PROPERTY FEATURES:

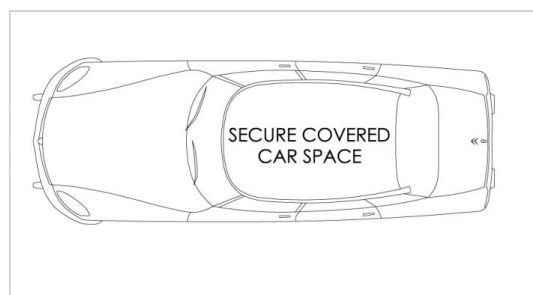
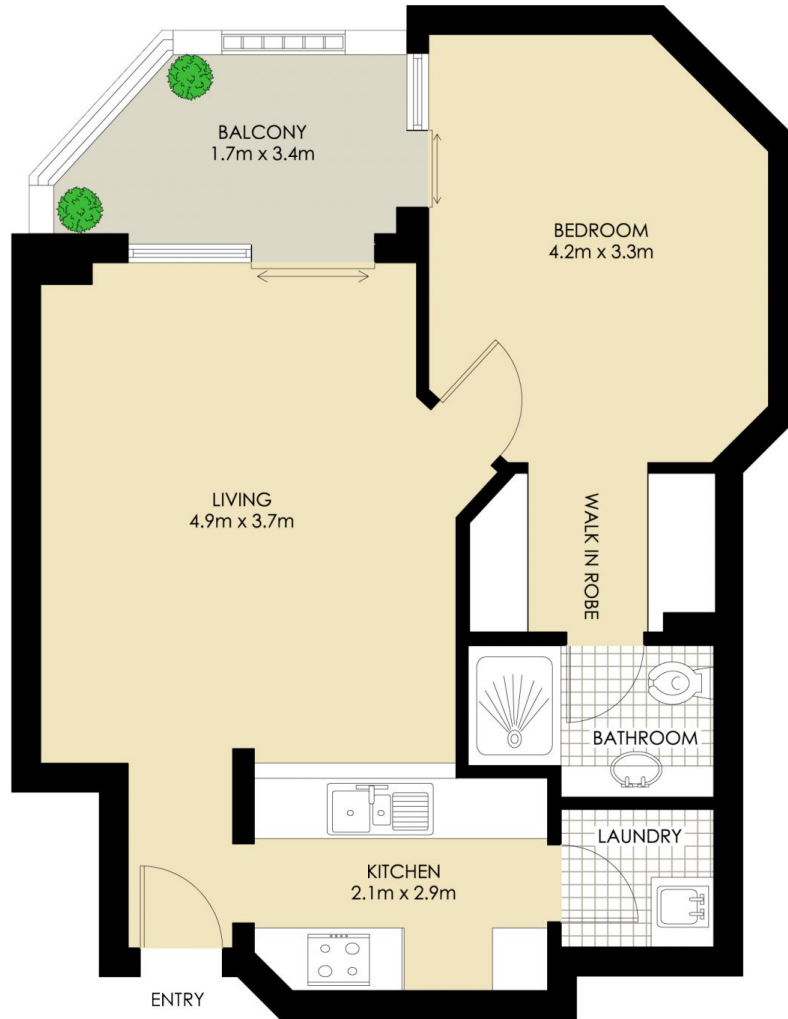
- Polished timber floors throughout
- Light & spacious open plan living that leads onto a sunny & private balcony
- Functional kitchen featuring granite benchtops, pantry, gas cooktop, oven, rangehood and dishwasher
- Large bedroom featuring en-suite bathroom, walk-in wardrobes and direct access onto balcony
- Secure undercover car space
- Separate internal laundry



Aimee Ryan
9818 8888

LIFESTYLE FEATURES:

- Approx 3.8km from the QVB in the Sydney CBD with express buses to the city from Victoria Road



(NOT ACTUAL LOCATION)

ROZELLE

"Crestview" - Balmain Shores



*PLANS SHOWN ONLY INDICATIVE OF LAYOUT. DIMENSIONS ARE APPROXIMATE.