



Rozelle

1 1

PROPERTY FEATURES

- Large north facing balcony with sunny garden outlook
- Spacious open plan living areas with floorboards throughout
- Queen size bedroom with mirrored built-in wardrobe, floorboards & direct access to balcony
- Contemporary kitchen with dishwasher & gas cooking
- Fully tiled modern bathroom
- Internal laundry with clothes dryer
- Visitor parking within building

LIFESTYLE FEATURES:

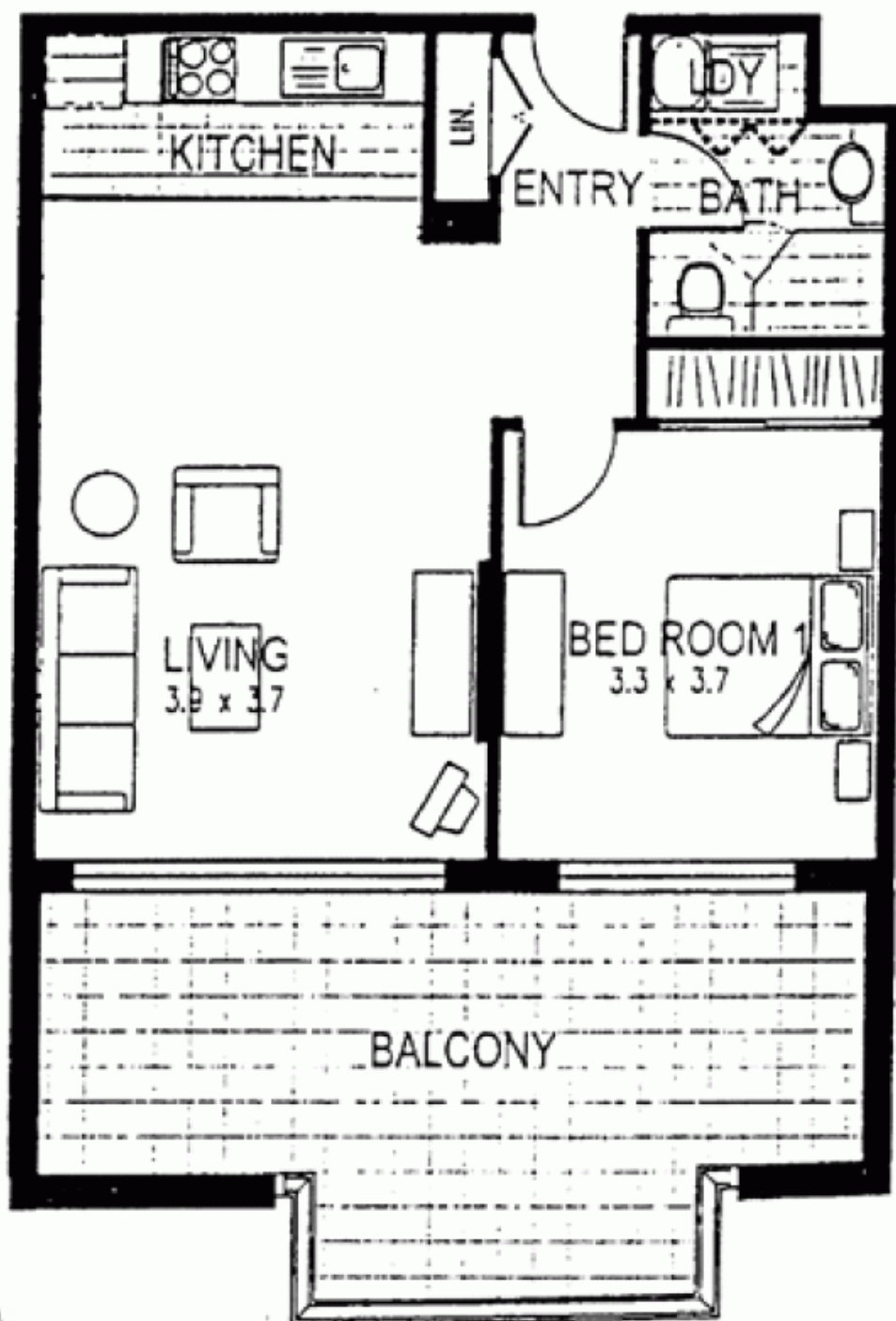
- Access to the Balmain Shores facilities including indoor lap pool, outdoor plunge pool, gymnasium, spa & sauna
- Approx 3.8km from the QVB in the Sydney CBD with express buses to the city from Victoria Road
- Approx 0.1km to the Bay Run & Bridgewater Park

Price : Leased! \$530 per week

View : <https://www.balmainrealty.com/1P2260>



Jenny Chen-Robertson
(02) 9818 8888



Every precaution has been taken to establish the accuracy of the included information, but does not constitute any representation by the vendor or agent. Prospective purchasers should make their own enquiries to verify the information contained in this document. Refer to contract of sale for actual inclusions.