



Level 3/7 Warayama Place Rozelle NSW

1 1 1

Located in the sought after complex in Balmain Shores, sits this practical, open plan one bedroom apartment. This apartment is the perfect combination of a quiet lifestyle while still being situated so close to the city.

Price : Leased! \$590 per week

View : <https://www.balmainrealty.com/1P2305>

With it's modern charm twist and the Balmain Peninsula at your door step, this apartment will be sure to tick all your boxes!

PROPERTY FEATURES:

- Freshly painted throughout
- Combined carpeted open planing living/dining which flows through to the sunny, tiled balcony.
- Generous sized master bedroom with mirrored built in wardrobe
- Balcony looks out across to large outdoor plunge pool included in the facilities the complex offers.

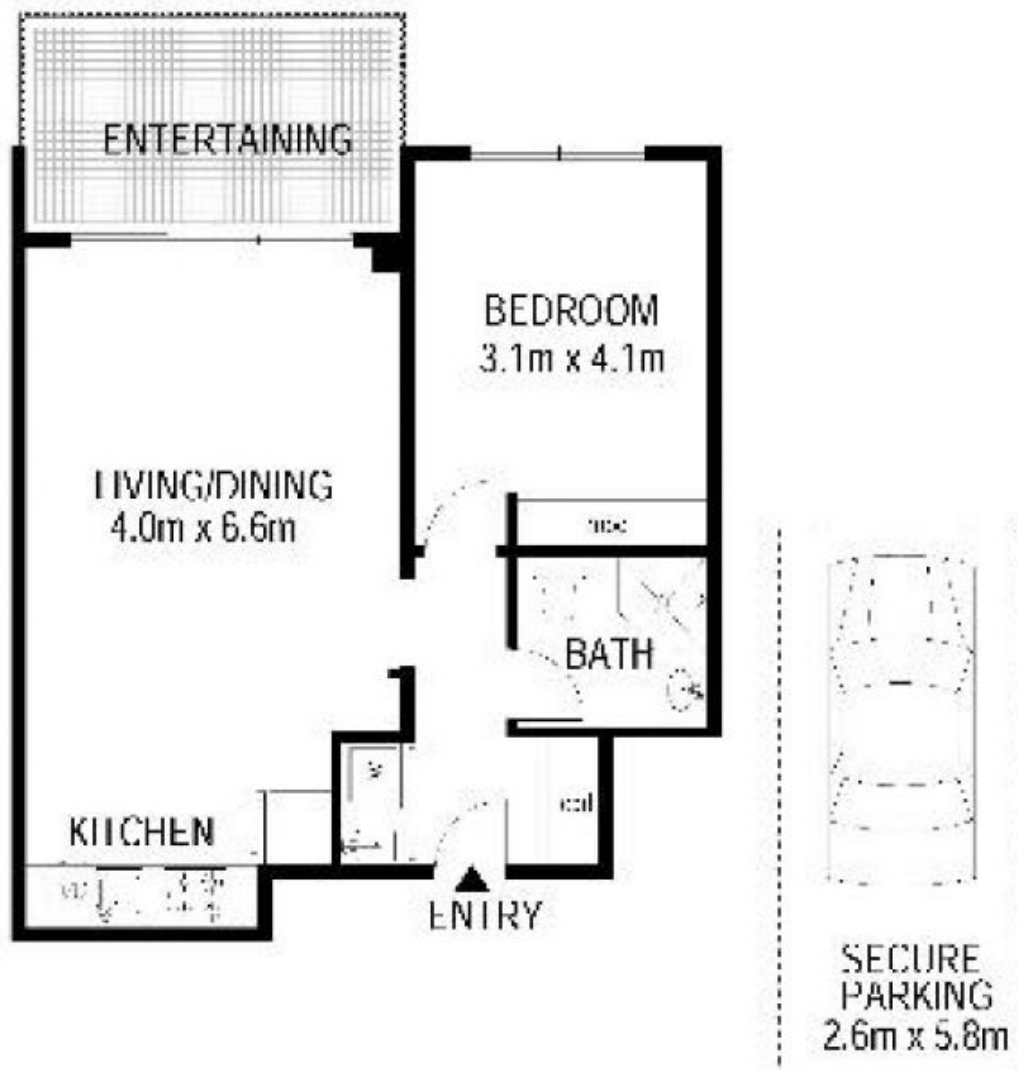


Bronte Brown
(02) 9818 8888

306/7 Warayama Place, Balmain Shores



Internal area approx 54m²



FLOOR PLAN SCALE: Not to scale

This floor plan is provided as a guide for general purposes only and should not be relied upon for specific details. No liability will be accepted.