



## 108/6 Yara Avenue Rozelle NSW

1 🏠 1 🛏

Renovated Studio Apartment in the Popular 'Balmain Shores' Complex

**Price** : Leased! \$490 per week

**Land Size** : 41 sqm

**View** : <https://www.balmainrealty.com/1P2345>

Situated in the highly sought after 'Balmain Shores' complex, this privately positioned freshly renovated studio apartment is perfect for those wanting unbeatable convenience to local eateries, express city transport & the harbour foreshore.

Property features include;

- Freshly painted interiors, new carpet & slimline roller blinds
- Spacious open plan layout that opens onto a private sun-drenched north facing balcony
- Gourmet kitchen featuring granite benchtops, ample storage & stainless steel appliances including gas cooktop,



**Jenny Chen-Robertson**  
(02) 9818 8888

## PROPERTY DETAILS

### AREA

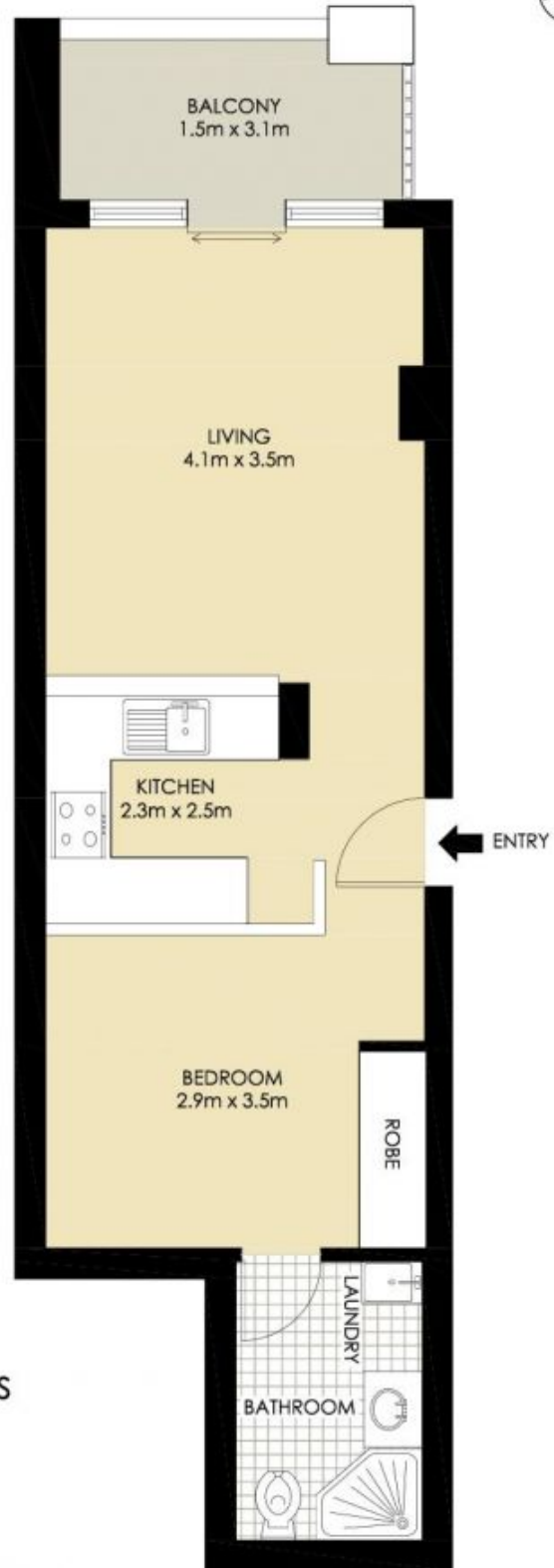
Total	41sqm
Internal	37sqm
Balcony	4sqm

### OUTGOINGS

Strata	\$941pq
Council	\$290pq
Water	\$172pq

### INSPECT

As advertised or by appointment



ROZELLE  
108/6 YARA AVENUE  
"The Pinnacle" - Balmain Shores



\*PLANS SHOWN ONLY INDICATIVE OF LAYOUT. DIMENSIONS ARE APPROXIMATE.

BALMAIN Realty

1300 REALTY  
9818 8888  
balmainrealty.com