

Balcony View



## Level 1/26 Warayama Place Rozelle NSW

1 

Stylish Modern Apartment with Water Views & Air Conditioning

Nestled in a peaceful & secure setting, this oversized studio apartment set within the 'Balmain Shores' waterfront complex boasts waterviews, space & a desirable lifestyle just moments stroll from the waterfront & 'Bay Run', Balmain & Rozelle villages with express public transport from your doorstep.

Property features include:

- Reverse cycle air-conditioning
- Water views and leafy outlook from balcony & living
- Spacious living spaces with a lovely sun drenched northerly aspect

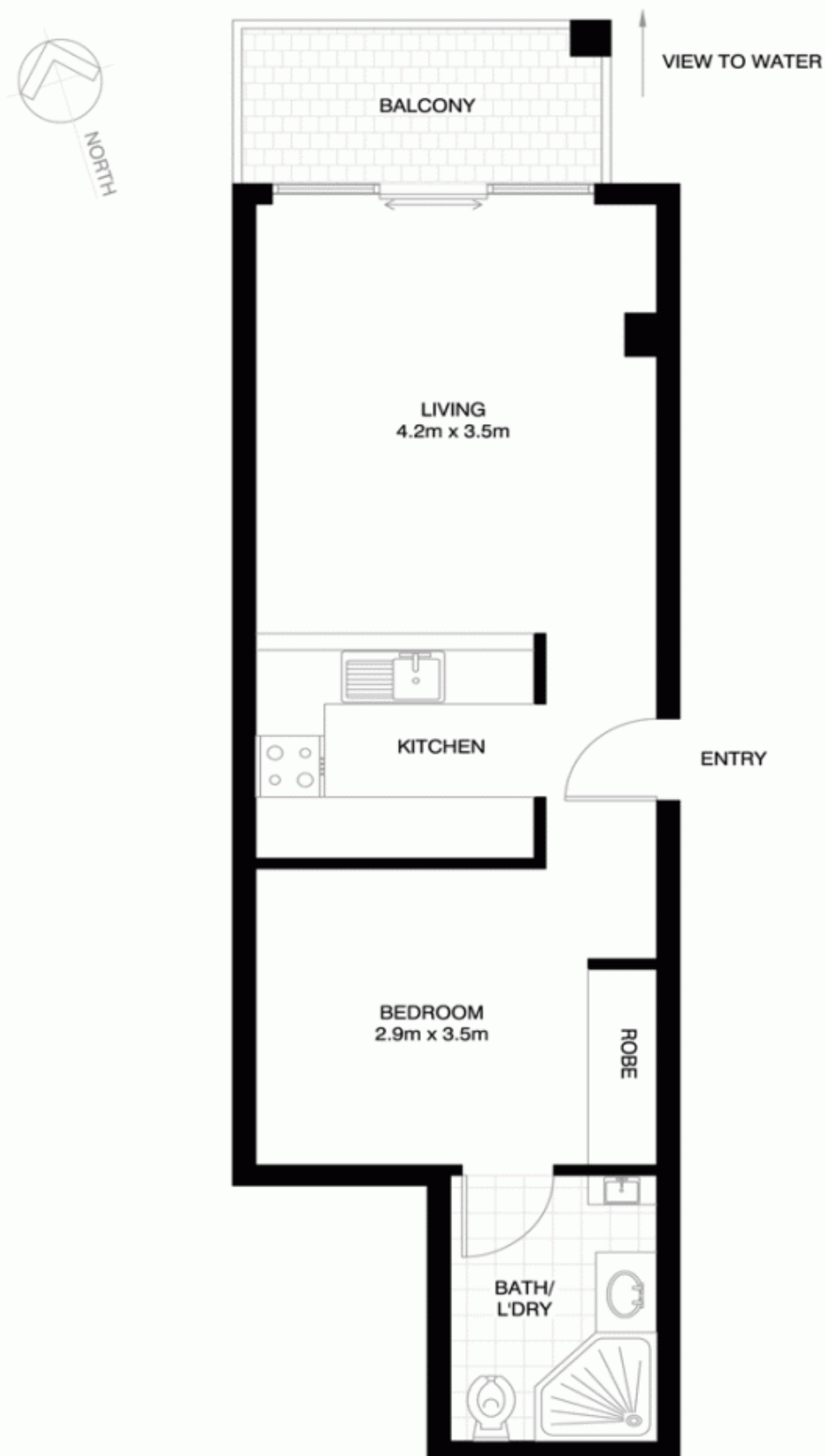
**Price** : Leased! \$500 per week  
**Building Size** : 4 sqm  
**View** : <https://www.balmainrealty.com/1P2372>



**Aimee Ryan**  
9818 8888

9818 8000

REALTY International  
"World Wide Web of Buyers & Sellers"



**ROZELLE**  
**107/26 WARAYAMA PLACE**  
**"Crestview" - Balmain Shores**

\*NOTE: ALL DIMENSIONS SHOWN ARE APPROXIMATE AND SHOULD ONLY BE USED AS A GUIDE. NOT TO SCALE.