



211/43 Terry Street Rozelle NSW

1 1 1

Set in the highly sought after 'Atelier' complex this one bedroom apartment features modern interiors, air-conditioning, secure parking with an additional lock up storage cage.

Price : SOLD \$730,000

Land Size : 71 sqm

View : <https://www.balmainrealty.com/1P2403>

Located just a moments stroll to Bridgewater Park & the Bay Run, express public transport with the convenience of neighbourhood shops including a gourmet grocer & cafe, barber, day spa, bottle shop, travel agent & a selection of other fine restaurants.



Scott Robertson
(02) 9818 8888



Jaime Wallace
(02) 9818 8888

This vibrant location is the perfect address for the first home buyer, professional on the go or investor alike. Currently leased at \$615 p/w until March 2019.

Property features include;



PROPERTY DETAILS

AREA

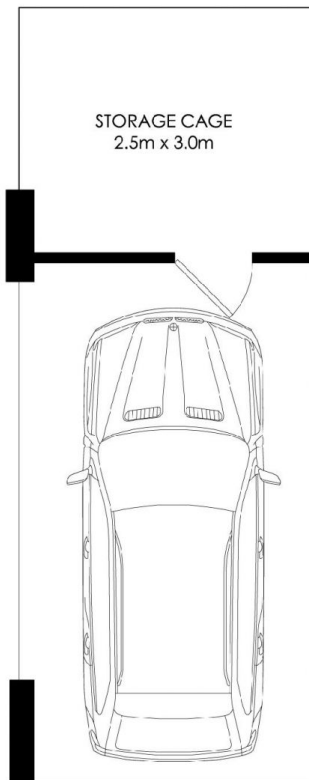
Total	71sqm
Internal & Balcony	48sqm
Car Space & Storage	23sqm

OUTGOINGS

Strata	\$733pq
Council	\$297pq
Water	\$172pq

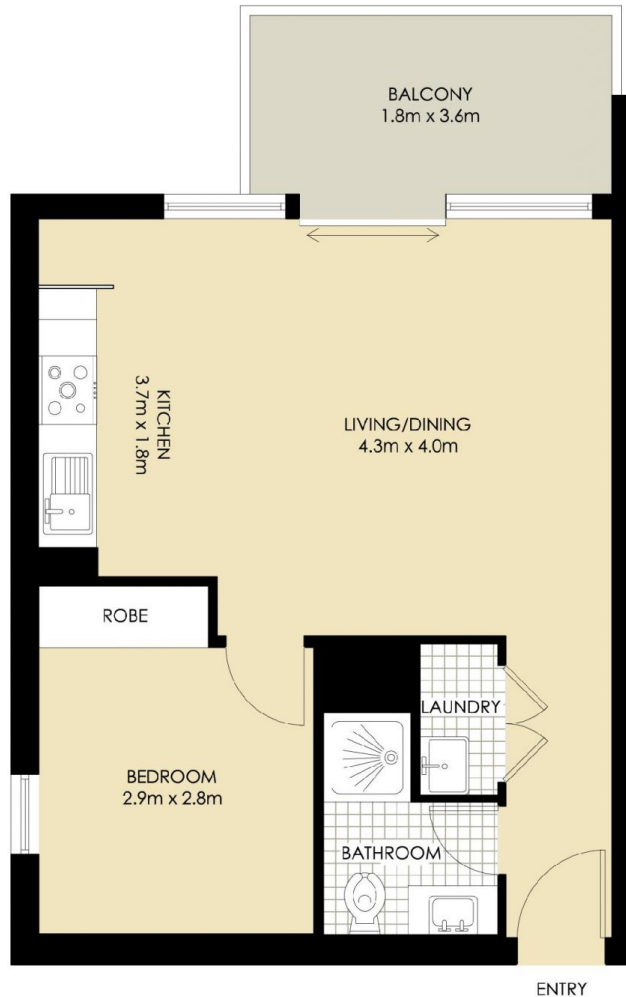
INSPECT

As advertised or by appointment



STORAGE CAGE
2.5m x 3.0m

SECURE COVERED CAR SPACE
5.3m x 3.0m
(NOT ACTUAL LOCATION)



ROZELLE
211/43 TERRY STREET
"Atelier"



*PLANS SHOWN ONLY INDICATIVE OF LAYOUT. DIMENSIONS ARE APPROXIMATE.

BALMAIN Realty

1300 REALTY
9818 8888
balmainrealty.com