



Level 4/28 Warayama Place Rozelle NSW

1 1 1

Executive 1 Bedroom Apartment in the Popular Balmain Shores Complex

Price : LEASED AFTER FIRST OPEN! \$590 per week
View : <https://www.balmainrealty.com/1P2700>

PROPERTY FEATURES:

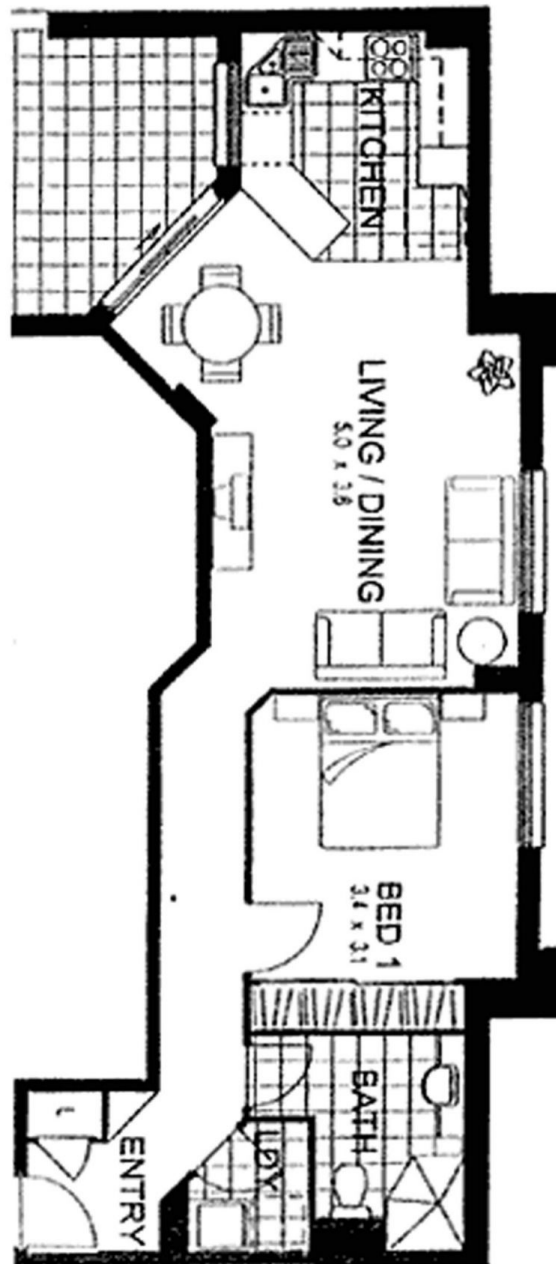
- Bright & spacious open plan living area
- Balcony with water glimpses & outlook onto Warayama Place
- Gourmet kitchen with gas cooking & dishwasher
- Queen-size bedroom with mirrored built-in wardrobe
- Modern bathroom with quality finishes
- Internal laundry with clothes dryer
- Undercover car space with direct lift access to apartment

LIFESTYLE FEATURES:

- Access to the Balmain Shores facilities including indoor lap pool, outdoor plunge pool, gymnasium, spa & sauna
- Approx 3.8km from the QVB in the Sydney CBD with



James Middleton
(02) 9818 8888



Images and floor plan illustration indicative only. Dimensions are approximate and not to scale.
Refer to contract of sale for actual inclusions.