



314/9 Warayama Place Rozelle NSW

1 1

Situated in the highly sought after 'Balmain Shores' complex, this privately positioned studio apartment overlooking Bridgewater Park takes in tranquil water views to Birkenhead Point & beyond, and offers unbeatable convenience to local eateries, express city transport & the harbour foreshore.

An excellent opportunity for first home buyers or investors looking to secure an apartment in one of Sydney's premiere locations.

Property features include;

- Spacious open plan living that flows onto a covered & elevated balcony taking in views over Bridgewater Park and out to the water
- Reverse cycle air-conditioning, block out roller blinds &

Price : SOLD \$615,000
Building Size : 47 sqm
View : <https://www.balmainrealty.com/1P2726>



Scott Robertson
(02) 9818 8888



Jaime Wallace
(02) 9818 8888

PROPERTY DETAILS

AREA

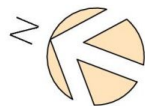
Total	47sqm
Internal	40sqm
Balcony	7sqm

OUTGOINGS

Strata	\$864p/q
Council	\$306p/q
Water	\$173p/q

INSPECT

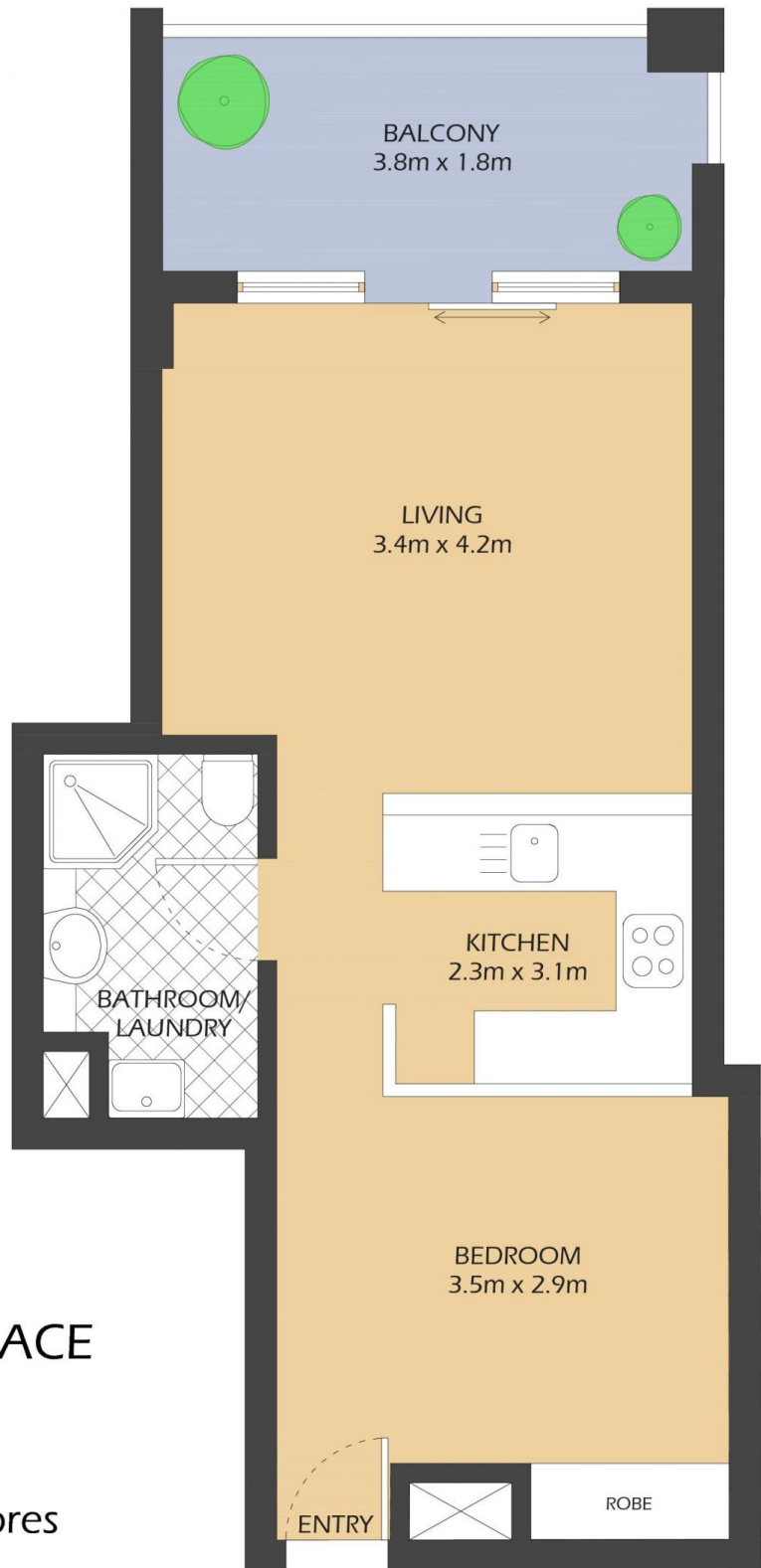
As advertised or by
private appointment.



314/9 WARAYAMA PLACE

ROZELLE

"Northpoint" - Balmain Shores



* FLOOR PLAN MEASUREMENTS ARE APPROXIMATE AND FOR ILLUSTRATIVE PURPOSES ONLY.

BALMAINRealty

9818 8888
BALMAINREALTY.COM