



Level 3/43 Terry Street Rozelle NSW

1 1 1

This stylish & spacious apartment offers well designed indoor/outdoor open plan living, additional storage and luxurious inclusions throughout.

Price : Leased! \$600 per week

View : <https://www.balmainrealty.com/1P2745>

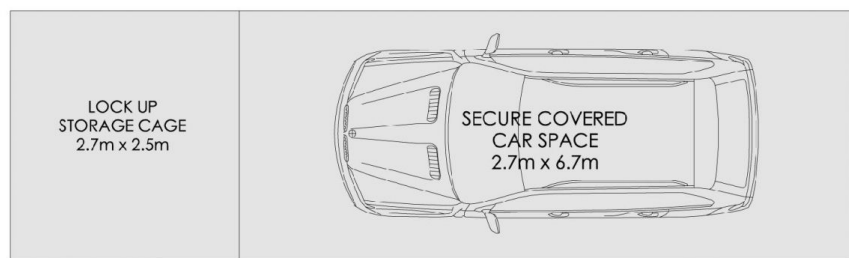
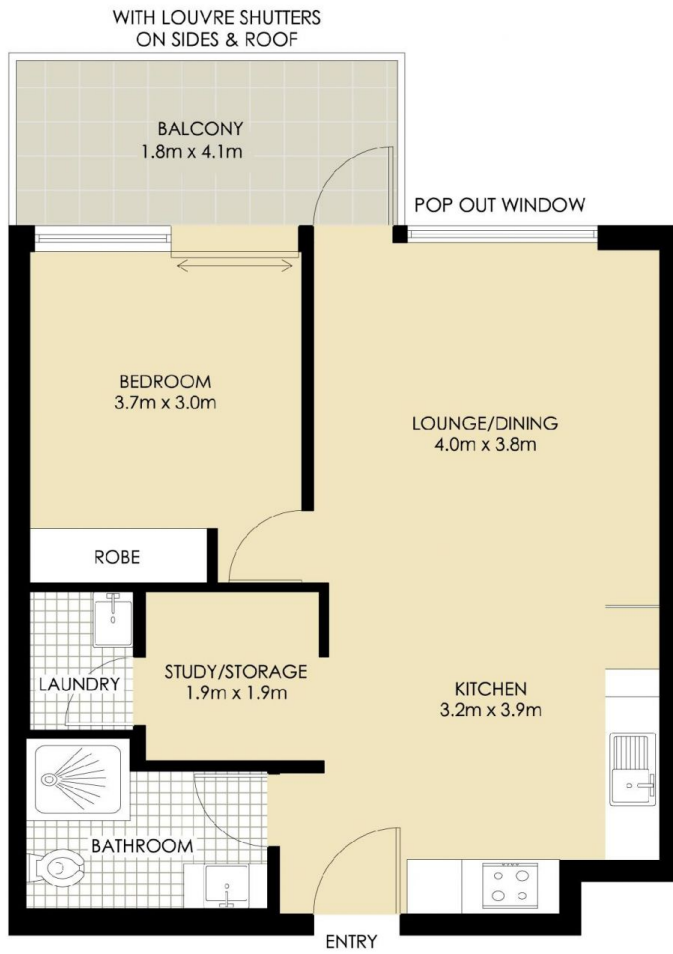
Featuring recent quality improvements including hardwood flooring, new kitchen appliances, Silestone Quartz benchtops & frosted splash back, customised breakfast bar with soft closing drawers & Tasmanian Oak benchtop, slimline roller blinds.



Bronte Brown
(02) 9818 8888

Property features include;

- Penthouse position with high cathedral ceilings that accentuate light & space
- Updated kitchen including all new appliances including double drawer dishwasher, gas cook top, oven & rangehood exhaust
- Enclosed balcony with louvre shutters allowing privacy &



(NOT ACTUAL LOCATION)

ROZELLE
43 TERRY STREET
"Atelier"



*PLANS SHOWN ONLY INDICATIVE OF LAYOUT. DIMENSIONS ARE APPROXIMATE.

