



3/30 Warayama Place Rozelle NSW

1 1 1

PROPERTY FEATURES:

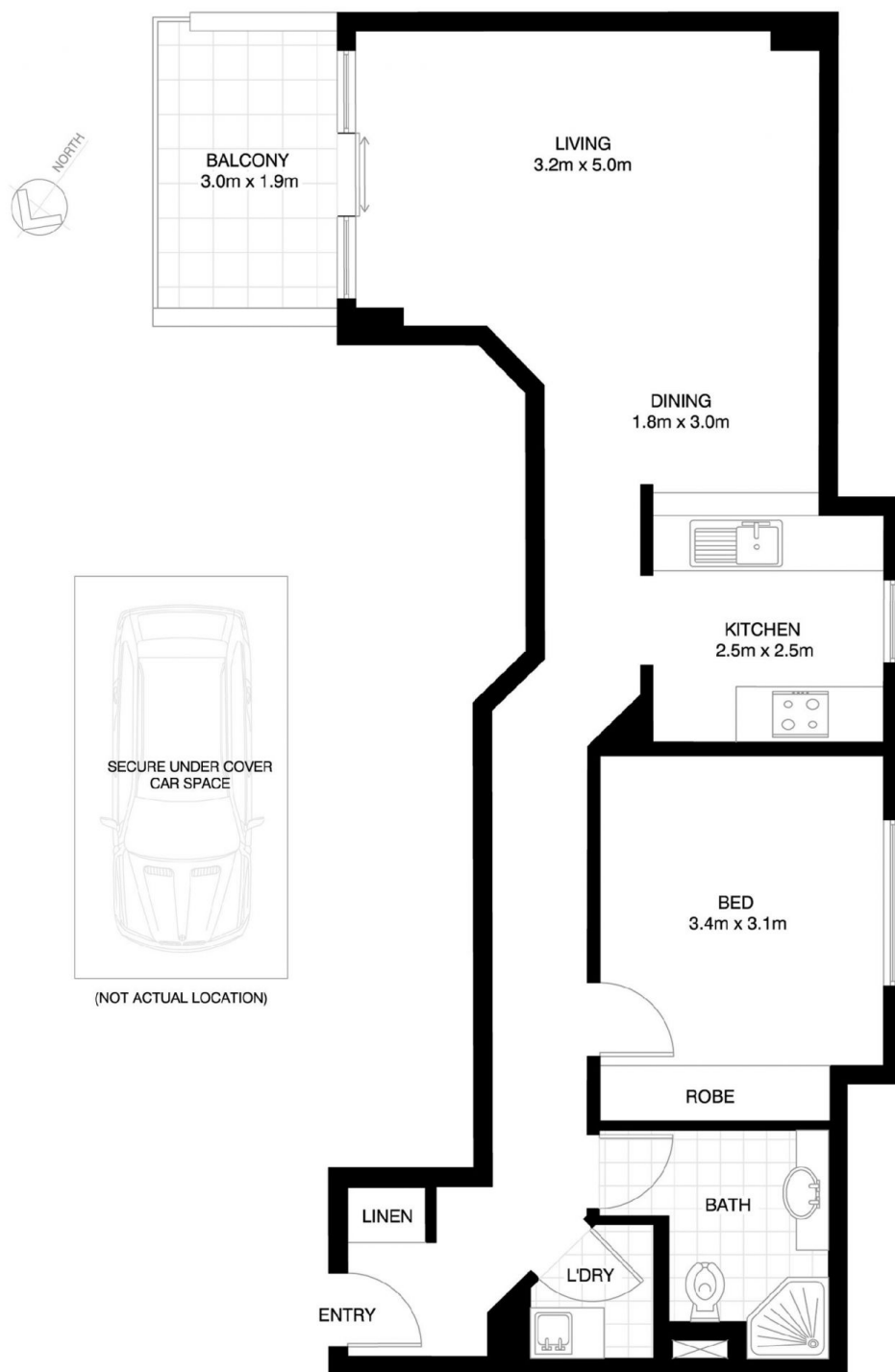
- Open plan lounge area leading out onto balcony
- Split system air conditioner
- Designer kitchen with gas cooking appliances and dishwasher
- Sunny balcony with views across tree-lined avenue
- Large bedroom with mirrored built-ins
- Stylish bathroom with quality finishes
- Internal laundry with clothes dryer
- Security car space with direct lift access to apartment

Price : Leased! \$580 per week

View : <https://www.balmainrealty.com/1P2751>

LIFESTYLE FEATURES:

- Short distance from the CBD with express buses to the city
- Access to indoor lap pool, outdoor plunge pool, gymnasium, spa & sauna
- Close to the Bay Run, Parkland, Darling Streets cafes,



ROZELLE
30 WARAYAMA PLACE
"Anchorage" - Balmain Shores

BALMAINRealty

9818 8888
BALMAINREALTY.COM