

Level 1/43 Terry Street Rozelle NSW

1 1 1

Immaculate & Stylish Contemporary Terrace Style Apartment Situated in the Popular "Atelier" Building

This immaculate & stylish contemporary terrace style apartment situated in the popular "Atelier" building features an additional home office/second bedroom and offers direct street access off a private garden courtyard.

Located just a minutes easy walk to Darling Street's restaurants, cafes & pubs with express public transport just metres from your doorstep taking you into the Sydney CBD in less than 10 minutes this is the perfect address.

Property features include:

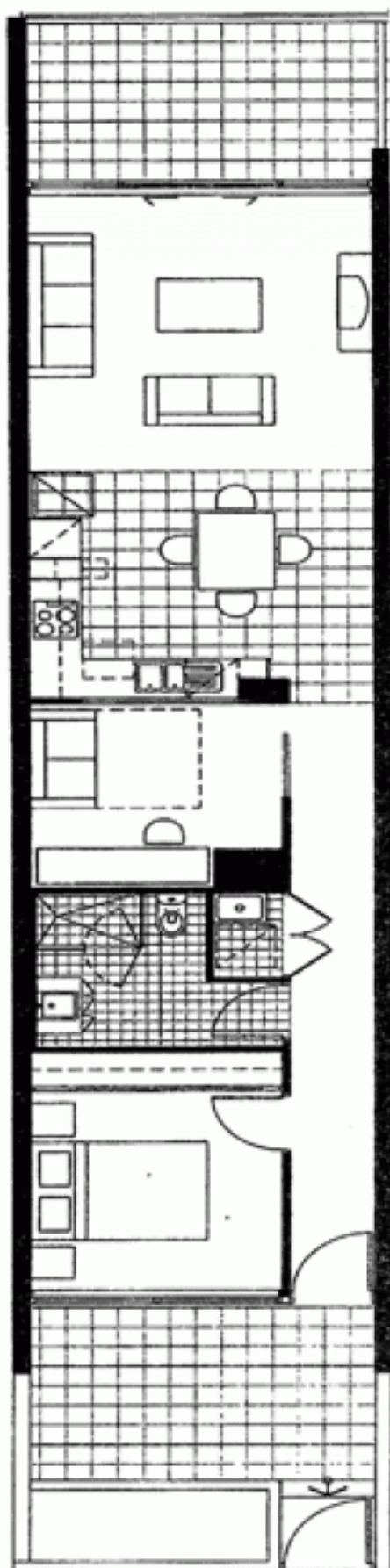
- Additional home office / second bedroom featuring retractable wall bed unit, study desk & built-in wardrobes.

Price : Leased! \$670 per week

View : <https://www.balmainrealty.com/1P2761>



James Middleton
(02) 9818 8888



Every precaution has been taken to establish the accuracy of the included information, but does not constitute any representation by the vendor or agent. Prospective purchasers should make their own enquiries to verify the information contained in this document. Refer to contract of sale for actual inclusions.