



766 Darling Street Rozelle NSW

5 2 4

This freestanding property set on a large 510sqm (approx) elevated block of land fronting Darling Street and Regent Street offers an exciting and rare opportunity to redevelop or build your dream home (subject to council approval).

Zoned Residential with existing commercial usage, the premises are currently leased to a commercial tenant attracting a rent of \$120,000 p/a. Ideal opportunity for the astute investor or to allow time to submit plans to council.

Set just metres from Rozelle Village and schools, the property is a short stroll to waterfront parkland and Bay Run, with rapid access to the city.

Property features include;

- 510sqm elevated block with two street frontages (approx

Price : SOLD \$3,150,000
Land Size : 510 sqm
View : <https://www.balmainrealty.com/1P2776>



Scott Robertson
 (02) 9818 8888



Jaime Wallace
 (02) 9818 8888

PROPERTY DETAILS

AREA

Land Size 510sqm

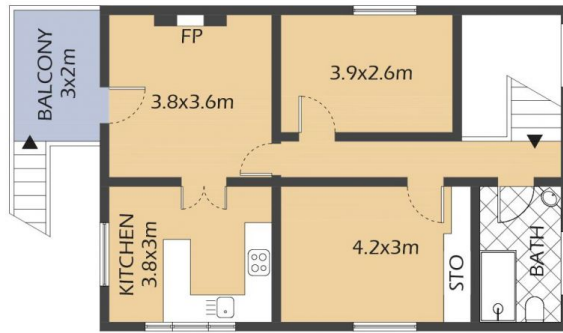
OUTGOINGS

Council \$3920p/q

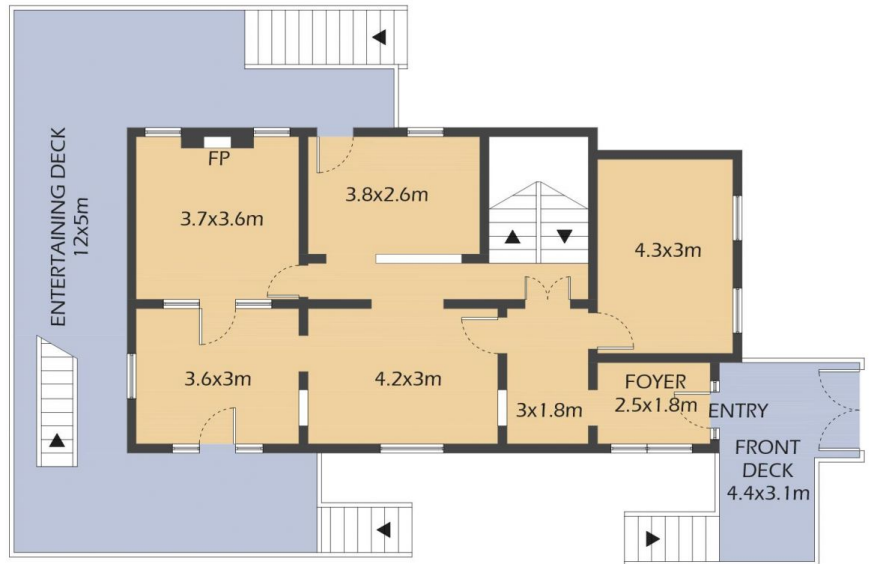
Water \$458p/q

INSPECT

As advertised or by private appointment.



2ND FLOOR



1ST FLOOR



GROUND FLOOR

766 DARLING STREET
ROZELLE

1m 2m 5m

* FLOOR PLAN MEASUREMENTS ARE APPROXIMATE AND FOR ILLUSTRATIVE PURPOSES ONLY.



BALMAINRealty

9818 8888
BALMAINREALTY.COM