



Level 4/30 Warayama Place Rozelle NSW

1 1 1

Spacious & Modern 1 Bedroom Apartment

This updated one bedroom apartment is perfect for a lock and leave lifestyle.

PROPERTY FEATURES:

- Light & spacious open plan living that leads onto a sunny & private balcony
- Functional kitchen featuring granite benchtops, pantry, gas cooktop, oven, rangehood and dishwasher
- Large bedroom featuring en-suite bathroom, walk-in wardrobes and direct access onto balcony
- Balcony comes with fly screen
- Secure undercover car space
- Separate internal laundry with dryer

Price : Leased! \$520 per week

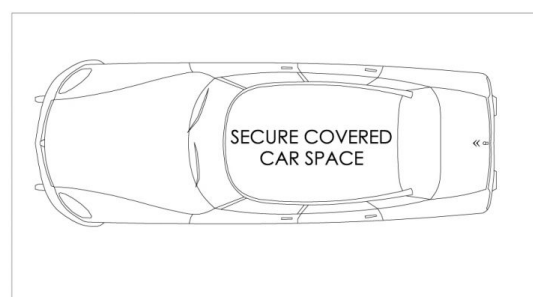
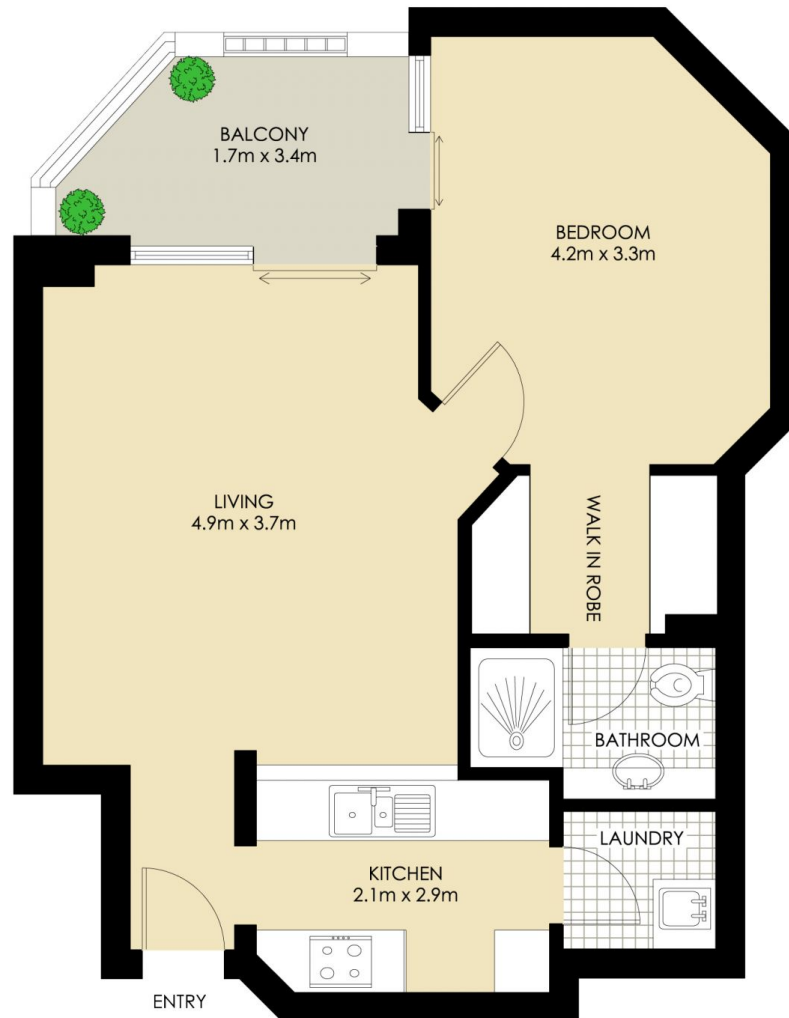
View : <https://www.balmainrealty.com/1P2779>



James Middleton
(02) 9818 8888

LIFESTYLE FEATURES:

<https://www.balmainrealty.com>



(NOT ACTUAL LOCATION)

ROZELLE

"Crestview" - Balmain Shores



*PLANS SHOWN ONLY INDICATIVE OF LAYOUT. DIMENSIONS ARE APPROXIMATE.