



112/122 Terry Street Rozelle NSW

2 2 1

Situated within the prized 'Union Balmain' development completed in late 2015, this modern two bedroom garden apartment with additional home office is set over a generous 124sqm of living space with dual frontage, offers excellent cross flow ventilation with courtyards at either end of the property so it feels more like a home than an apartment.

Ideally placed within a moments stroll to express city transport and neighbourhood gourmet grocer & cafe, barber, bottle shop, day spa, travel agency and a selection of other fine restaurants. Residents can also enjoy access to the exclusive rooftop terrace taking in city skyline & harbour views, with BBQ facilities & communal vegetable garden.

Property features include;

Price : SOLD \$1,472,500
Land Size : 140 sqm
View : <https://www.balmainrealty.com/1P2826>



Scott Robertson
 (02) 9818 8888



Jaime Wallace
 (02) 9818 8888

PROPERTY DETAILS

AREA

Total	140sqm
Internal&External	124sqm
Car Space&Storage	16sqm

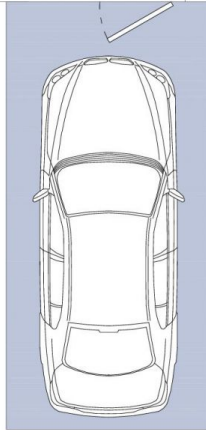
OUTGOINGS

Strata	\$1797p/q
Council	\$306p/q
Water	\$180p/q

INSPECT

As advertised or by private appointment.

STORAGE CAGE
2.8m x 1.0m



SECURE COVERED
CAR SPACE
5.5m x 2.6m
(NOT ACTUAL
LOCATION)



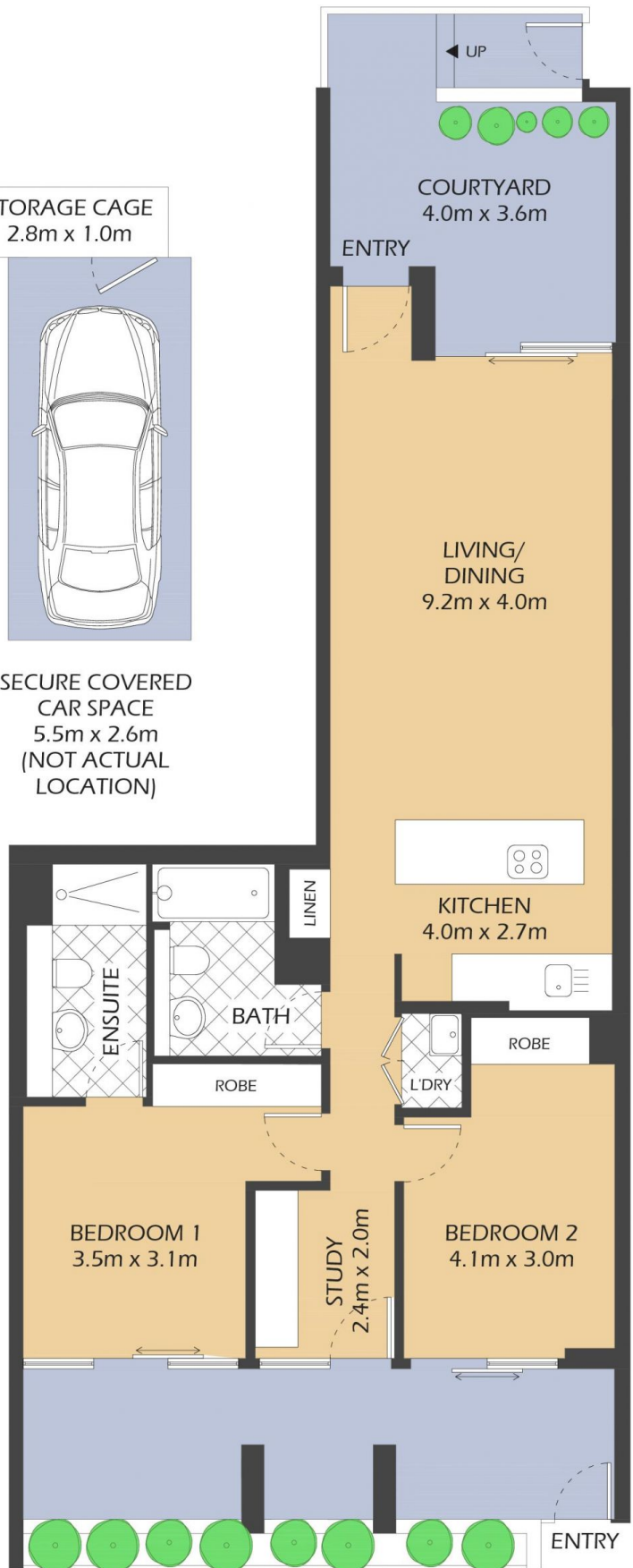
112/122 TERRY STREET

ROZELLE

"Union Balmain"



* FLOOR PLAN MEASUREMENTS ARE APPROXIMATE AND FOR ILLUSTRATIVE PURPOSES ONLY.



BALMAINRealty

9818 8888
BALMAINREALTY.COM