



## Level 4/28 Warayama Place Rozelle NSW

1 1 1

Executive One Bedroom Apartment in the Popular Balmain Shores Complex

**Price** : Leased! \$590 per week

**View** : <https://www.balmainrealty.com/1P2864>

### PROPERTY FEATURES:

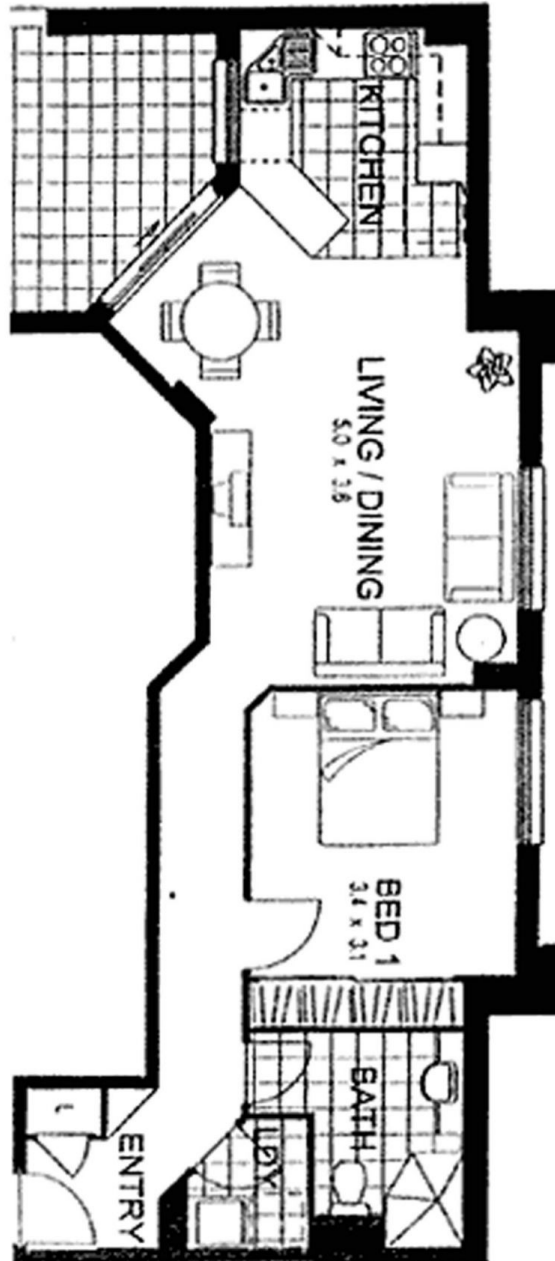
- Bright & spacious open plan living area
- Balcony with water glimpses & outlook onto Warayama Place
- Gourmet kitchen with gas cooking & dishwasher
- Queen-size bedroom with mirrored built-in wardrobe
- Modern bathroom with quality finishes
- Internal laundry with clothes dryer
- Undercover car space with direct lift access to apartment

### LIFESTYLE FEATURES:

- Access to the Balmain Shores facilities including indoor lap pool, outdoor plunge pool, gymnasium, spa & sauna



**James Middleton**  
(02) 9818 8888



Images and floor plan illustration indicative only. Dimensions are approximate and not to scale.  
Refer to contract of sale for actual inclusions.