



17/1 Wulumay Close Rozelle NSW

3  2  1 

Set within the 'The Poolsides' of the highly sought after Balmain Cove waterfront development, this apartment sits on the top floor and features sun-filled interiors opening onto a large north facing balcony with distant water views.

Located approximately 4kms from Sydney CBD and only a short stroll from express city transport, waterfront parks & the Bay Run, schools, with an array of local eateries & shops literally on your doorstep.

Property features include;

- Top floor position in a small building comprising of only 3 levels
- Open plan interiors that lead onto a sun-drenched north facing balcony
- Well appointed kitchen features granite benchtops with

Price : SOLD \$1,300,000
Land Size : 148 sqm
View : <https://www.balmainrealty.com/1P2872>



Scott Robertson
(02) 9818 8888

PROPERTY DETAILS

AREA

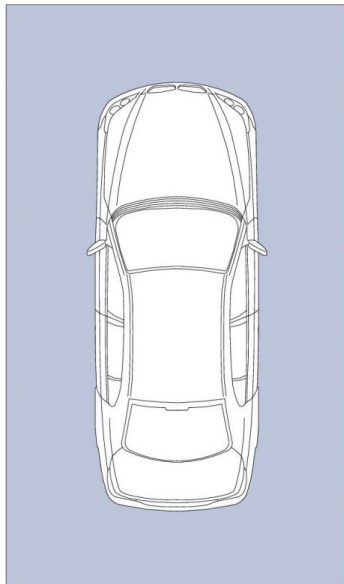
Total	148sqm
Internal&Balconies	116sqm
Lock-up Garage	32sqm

OUTGOINGS

Strata	\$2590p/q
Council	\$334p/q
Water	\$177p/q

INSPECT

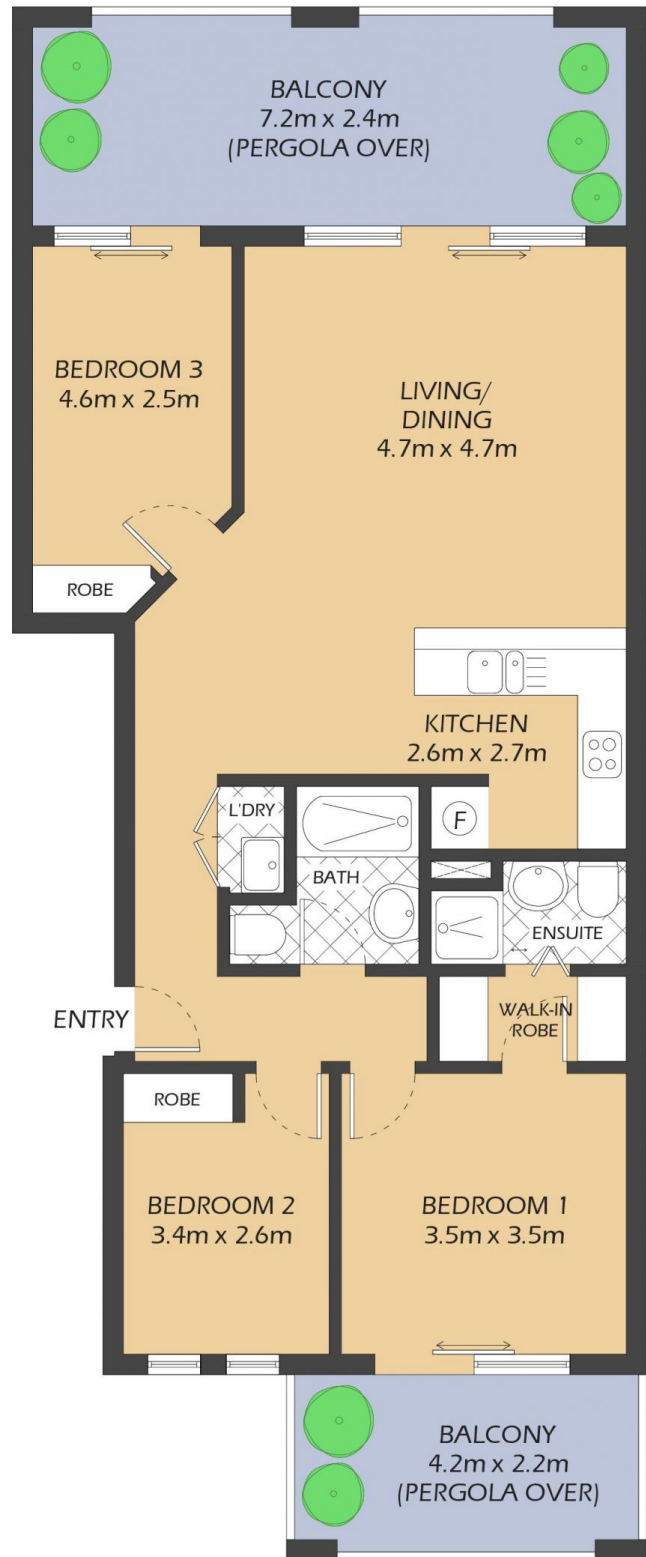
As advertised or by private appointment.



LOCK UP GARAGE
7.5m x 4.2m
(NOT ACTUAL LOCATION)



STORAGE
1.5m x 1.4m



17/1 WULUMAY CLOSE ROZELLE

"The Poolsides" - Balmain Cove

1m 2m 5m

* FLOOR PLAN MEASUREMENTS ARE APPROXIMATE AND FOR ILLUSTRATIVE PURPOSES ONLY.

BALMAINRealty

9818 8888
BALMAINREALTY.COM