



403/8 Yara Avenue Rozelle NSW

1 1 1

Situated within the well-located 'Pinnacle' building in the harbourside Balmain Shores complex, this top floor one bedroom apartment offers refreshed interiors with a sun-filled covered balcony taking in a private & leafy garden outlook.

Residents can enjoy a number of amenities including indoor heated lap pool, outdoor plunge pool, modern well equipped gymnasium, spa & saunas, with the added benefit of being on the doorstep of the Bay Run & an abundance of waterfront parkland to enjoy the outdoor lifestyle this location has to offer.

Property features include;

- Top floor position, situated on level 4
- Spacious open plan living/dining which opens onto a

Price : SOLD \$810,000
Building Size : 70 sqm
View : <https://www.balmainrealty.com/1P2904>



Scott Robertson
 (02) 9818 8888

PROPERTY DETAILS

AREA

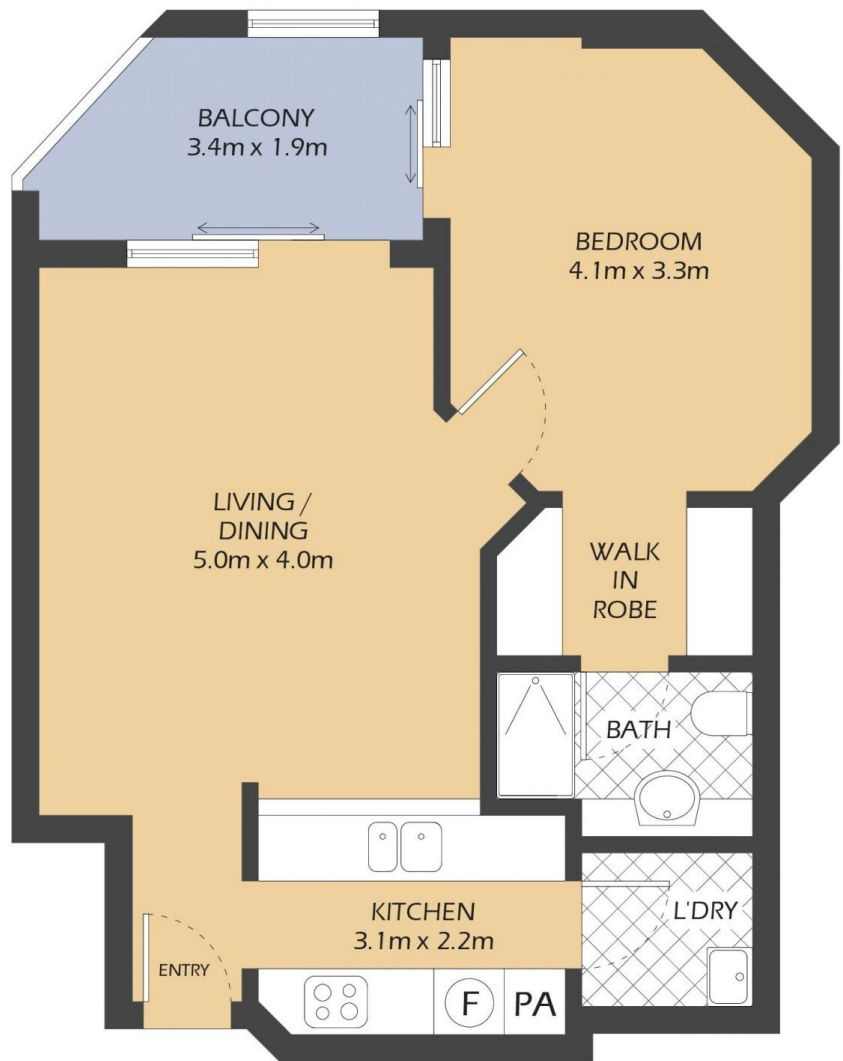
Total	70sqm
Internal	50sqm
Balcony	5sqm
Car Space	15sqm

OUTGOINGS

Strata	\$1282p/q
Council	\$306p/q
Water	\$177p/q

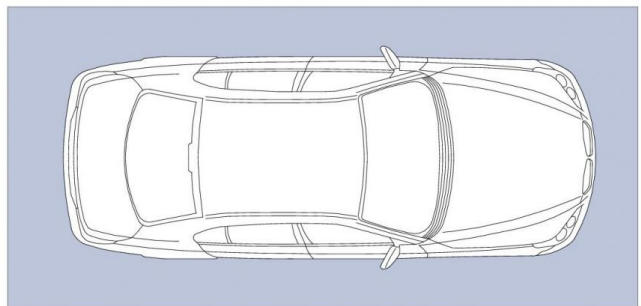
INSPECT

As advertised or by private appointment.



403/8 YARA AVENUE
ROZELLE

Balmain Shores 'Pinnacle'



SECURE COVERED CAR SPACE
5.5m x 2.7m
(NOT ACTUAL LOCATION)



* FLOOR PLAN MEASUREMENTS ARE APPROXIMATE AND FOR ILLUSTRATIVE PURPOSES ONLY.

BALMAINRealty

9818 8888
BALMAINREALTY.COM