



33 Halloran Street Lilyfield NSW

2 1 1

Positioned in the ultra-convenient suburb of Lilyfield, this two bedroom semi is perfect for those looking for a suburban feel and space, whilst still being in close proximity to the Sydney CBD.

Exquisitely renovated throughout, this contemporary home offers luxurious interiors that flow to a low maintenance backyard with separate lock up garage, with the added bonus of a loft conversion ideal for a study or storage space.

Property features include;

- Set on a large 192sqm block with two street frontages on a wide leafy cul-de-sac
- Sleek designer kitchen with gorgeous marble stone bench tops with breakfast bar and a host of stainless appliances

Price : SOLD \$1,440,000
Land Size : 192 sqm
View : <https://www.balmainrealty.com/1P2910>



Scott Robertson
 (02) 9818 8888



Jaime Wallace
 (02) 9818 8888

PROPERTY DETAILS

AREA

Land Size 192sqm

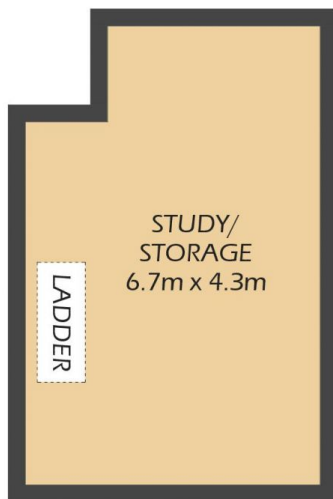
OUTGOINGS

Council \$392p/q

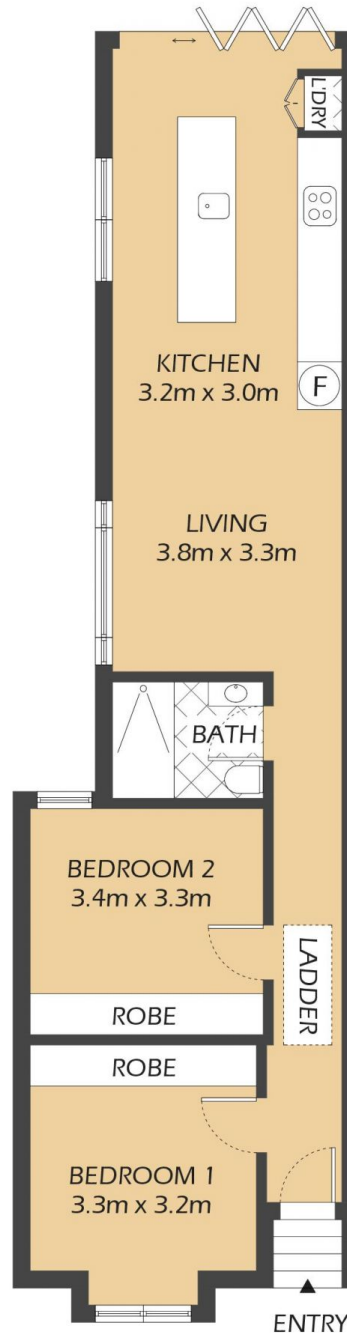
Water \$392p/q

INSPECT

As advertised or by private appointment.

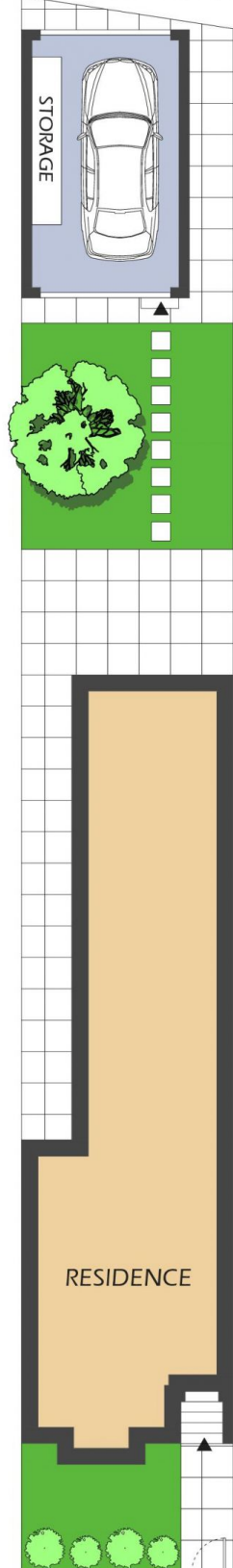


ATTIC



ENTRY

LOCK-UP GARAGE
& STORAGE
5.9m x 3.5m
ACCESS OFF GROVE STREET



HALLORAN STREET

33 HALLORAN STREET
LILYFIELD



0.5m 1m 2m 5m

* FLOOR PLAN MEASUREMENTS ARE APPROXIMATE AND FOR ILLUSTRATIVE PURPOSES ONLY.

BALMAINRealty

9818 8888
BALMAINREALTY.COM