



2/8 Burt Street Rozelle NSW

2 1 1

Set within a small block of only 4 apartments positioned on the high side of the street, this two bedroom apartment offers refreshed interiors and is peacefully positioned at the rear of the building.

Located just a moments stroll from Easton Park, Rozelle Village offering an abundance of eateries and shops, with express city buses & light rail.

Perfect as a first-home, city bolt-hole or ideal investment opportunity. This is your chance to purchase low maintenance apartment in an older style building, in a great location.

Property features include;

- Freshly painted interiors, fly screens & roller blinds

Price : SOLD \$780,000
Building Size : 67 sqm
View : <https://www.balmainrealty.com/1P2915>



Scott Robertson
(02) 9818 8888

PROPERTY DETAILS

AREA

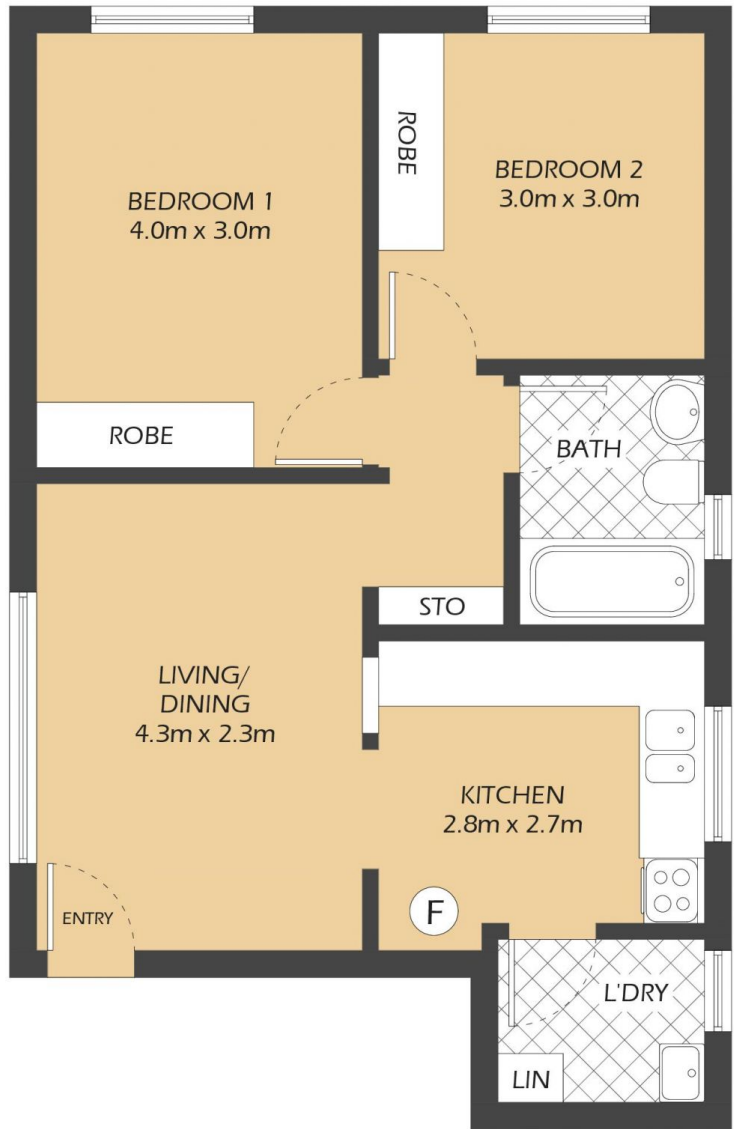
Total 67sqm
Internal 54sqm
Car Space 13sqm

OUTGOINGS

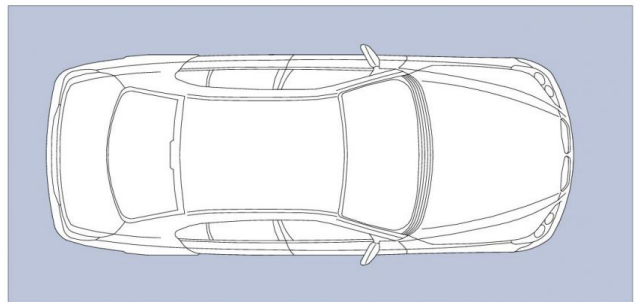
Strata \$1116p/q
Council \$306p/q
Water \$183p/q

INSPECT

As advertised or by private appointment.



2/8 Burt Street
ROZELLE



CAR SPACE
5.3m x 2.5m
(NOT ACTUAL LOCATION)



* FLOOR PLAN MEASUREMENTS ARE APPROXIMATE AND FOR ILLUSTRATIVE PURPOSES ONLY.

BALMAINRealty

9818 8888
BALMAINREALTY.COM