



Level 4/47-51 Lilyfield Road Rozelle NSW

2 2 2

Pet Friendly Top Floor Sunny Two Bedroom Apartment with Storage

Situated within the 'Easton' development, this two bedroom apartment with additional home office/ study occupies a private & secure top floor position with spacious open plan living that flows seamlessly onto a large sun-filled north facing balcony.

Only a short stroll from Darling Streets array of cafes & retail strip with express CBD transport & Easton Park just a minutes walk from the front door.

Property Features:

- Top floor position in the building with two balconies at either end offers excellent cross flow ventilation with a

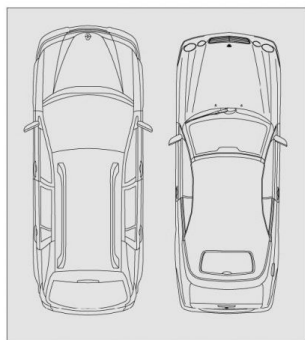
Price : Leased! \$720 per week
Land Size : 159 sqm
View : <https://www.balmainrealty.com/1P3029>



James Middleton
(02) 9818 8888



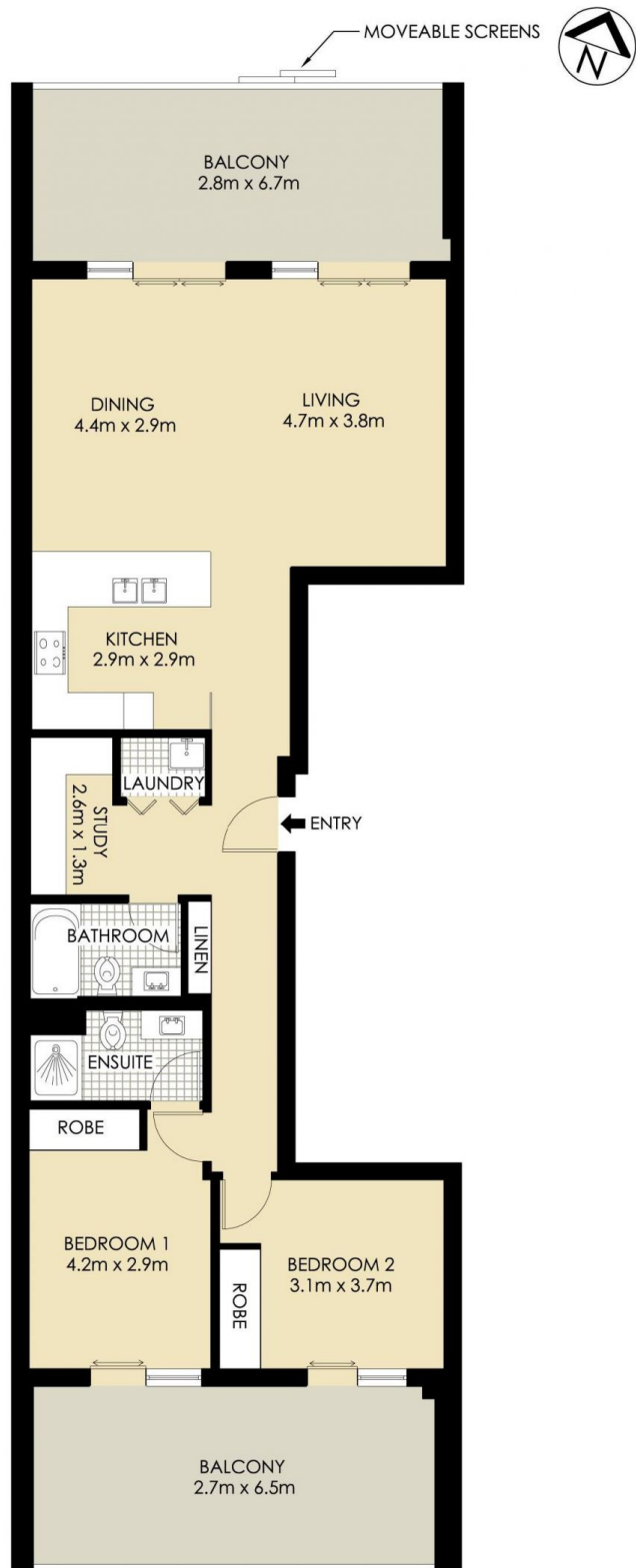
Suzanne MacMillan
(02) 9818 8888



SECURE UNDERCOVER CAR SPACES
5.4m x 4.9m
(NOT ACTUAL LOCATION)



ROZELLE
403/47-51 LILYFIELD ROAD
"Easton"



*PLANS SHOWN ONLY INDICATIVE OF LAYOUT. DIMENSIONS ARE APPROXIMATE.

BALMAINRealty

9818 8888 | balmain.com