



Level 1/8 Yara Avenue Rozelle NSW

1 1 1

Ground Floor Apartment with Secluded 14sqm Garden Courtyard

With carpet throughout and a substantial 14sqm garden courtyard accessible from both the living & bedroom this one bedroom apartment is the perfect entry level property.

Positioned so close to the action only moments from Darling Street's cafes, restaurants, transport & the harbour foreshore this apartment found within the 'Balmain Shores' complex offers a relaxed easy going lifestyle.

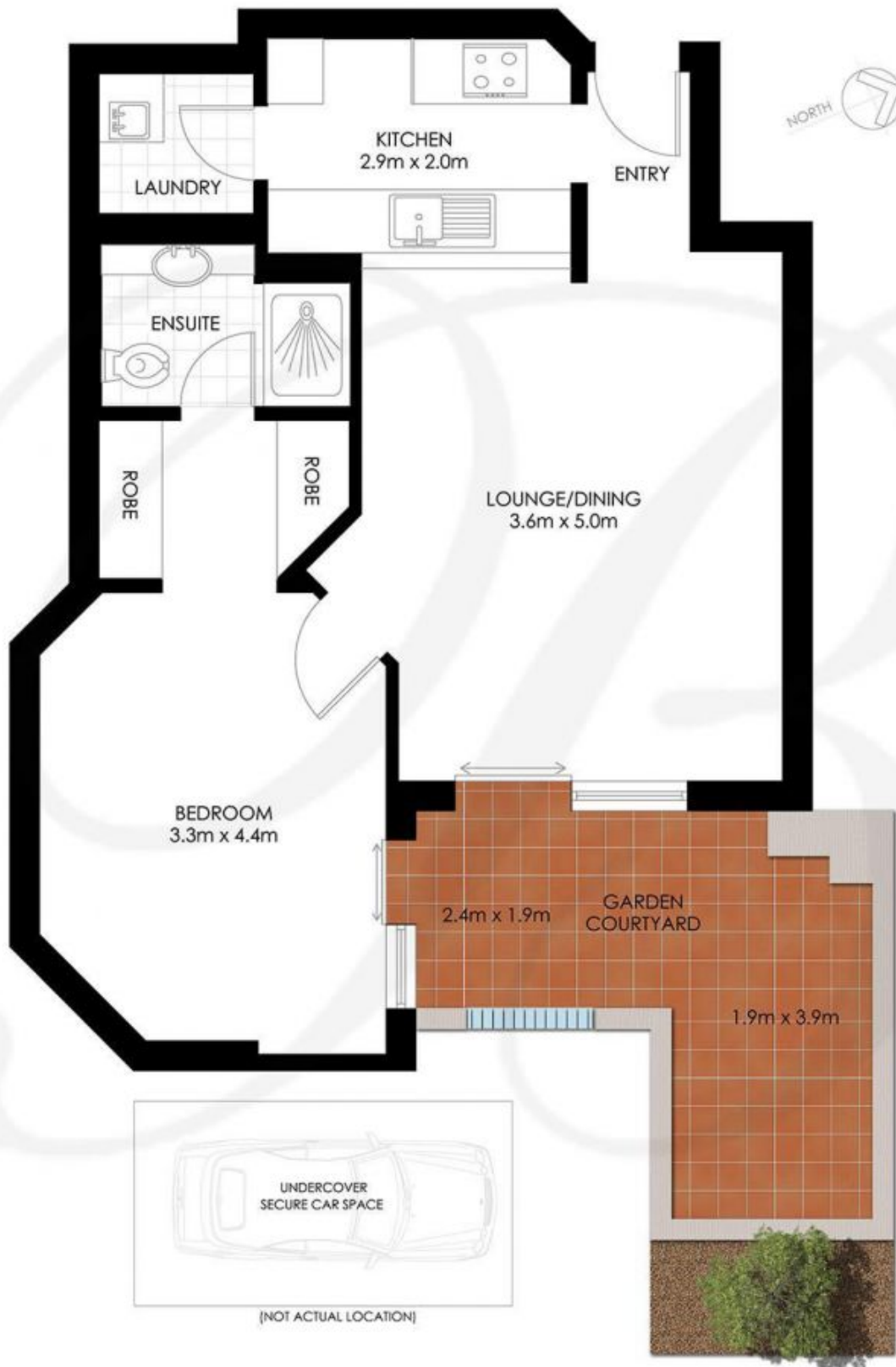
Property Features:

- Spacious open plan interiors that open on to your own private garden courtyard
- Generous sized bedroom with mirrored his and hers

Price : Leased! \$490 per week
Building Size : 79 sqm
View : <https://www.balmainrealty.com/1P3106>



James Middleton
(02) 9818 8888



ROZELLE 103/8 YARA AVENUE "Pinnacle" - Balmain Shores

*PLANS SHOWN ONLY INDICATIVE OF LAYOUT. DIMENSIONS ARE APPROXIMATE.