



303/15 Warayama Place Rozelle NSW

3 2 2

Situated on the absolute waterfront within the harbour-side enclave of 'Balmain Shores', this spectacular apartment takes in sweeping harbour views from a sun-filled northerly aspect and is sure to impress the most discerning buyer.

Balmain Shores residents have access to first class amenities including swimming pools, spa, saunas & gymnasium, and this magnificent property is found only a moments stroll to neighbourhood cafes, restaurants, pubs, an abundance of parkland, the Bay Run and express city transport.

Property features include;

- Located within the highly sought after Northpoint building, comprising of only 4 levels and positioned directly on the waterfront

Price : SOLD OFF-MARKET | RECORD PRICE
Building Size : 182 sqm
View : <https://www.balmmainrealty.com/sale/nsw/inner-west/rozelle/residential/apartment/6501270>



Scott Robertson
(02) 9818 8888



Elizabeth Rook
(02) 9818 8888

PROPERTY DETAILS

AREA

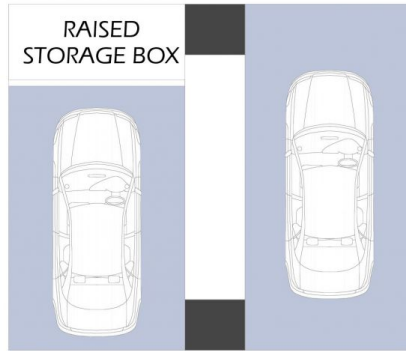
Total	182sqm
Internal	127sqm
External	18sqm
Parking	37sqm

OUTGOINGS

Strata	\$2937p/q
Council	\$348p/q
Water	\$148p/q

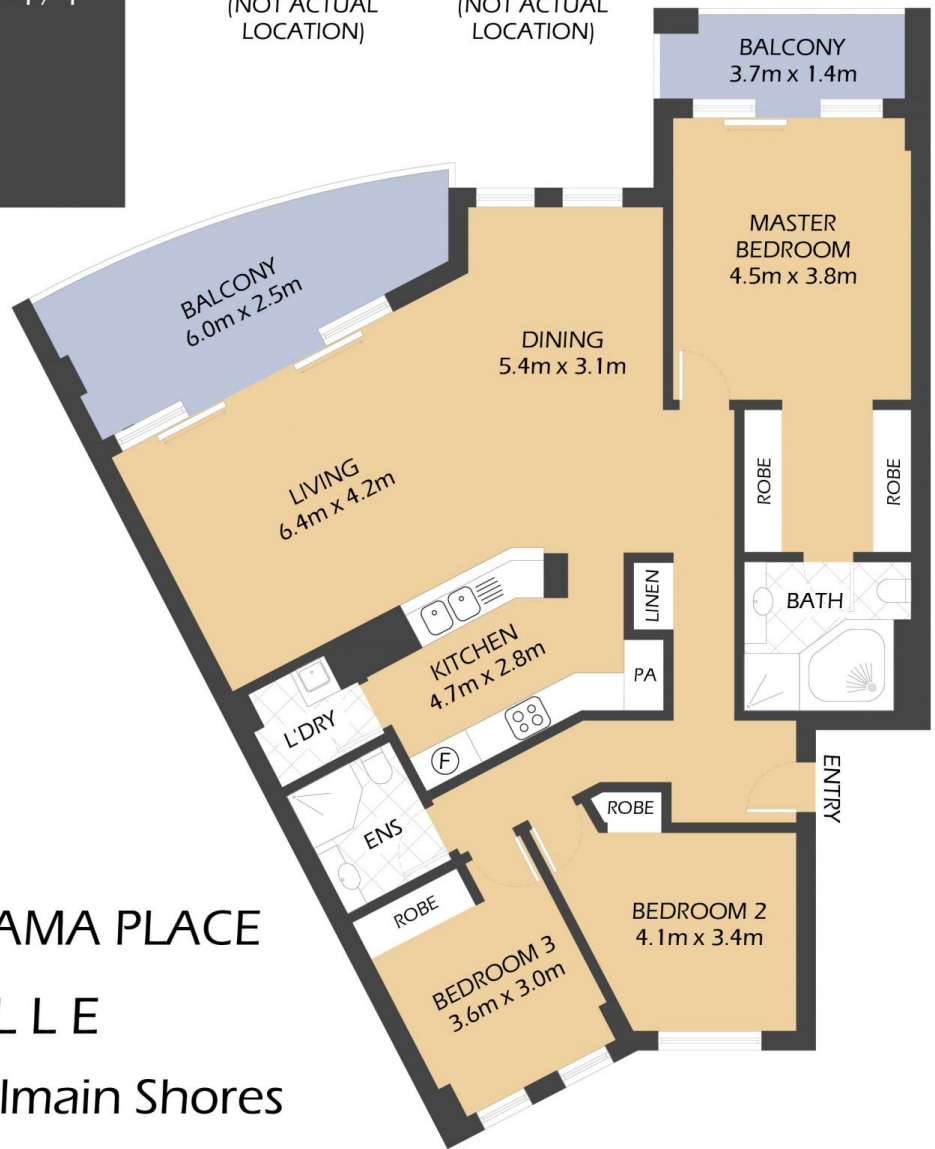
INSPECT

As advertised or by private appointment.



SECURE UNDERCOVER CAR SPACE
5.5m x 2.8m
(NOT ACTUAL LOCATION)

SECURE UNDERCOVER CAR SPACE
5.5m x 2.7m
(NOT ACTUAL LOCATION)



303/15 WARAYAMA PLACE

ROZELLE

"Northpoint" - Balmain Shores



*FLOOR PLAN MEASUREMENTS ARE APPROXIMATE AND FOR ILLUSTRATIVE PURPOSES ONLY.

BALMAINRealty

9818 8888

BALMAINREALTY.COM