



102/7 Yara Avenue Rozelle NSW

1 1 1

Situated within the prized 'Balmain Shores' resort like complex, this stylishly appointed one bedroom apartment features freshly painted interiors, new blinds & plush carpet, and flows onto a large 20sqm entertainer's garden terrace with a private, sun-filled outlook.

Located just a moment's stroll to Bridgewater Park and the harbour foreshore with the Bay Run, plus it's conveniently located to neighbourhood cafes & restaurants with express city transport only a short stroll from your doorstep.

Property features include;

- Spacious open plan living and dining area that opens onto a large sun-filled terrace with planter box garden
- Freshly painted interiors, new roller blinds & plush new carpet

Price : SOLD \$975,000
Building Size : 90 sqm
View : <https://www.balmainrealty.com/1P3231>



Scott Robertson
(02) 9818 8888

PROPERTY DETAILS

AREA

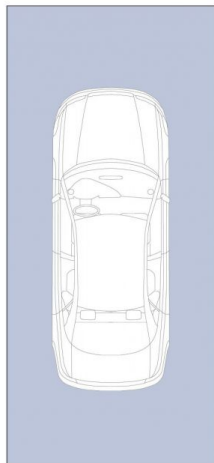
Total	90sqm
Internal	52sqm
External	25sqm
Parking	13sqm

OUTGOINGS

Strata	\$1040p/q
Council	\$310p/q
Water	\$146p/q

INSPECT

As advertised or by private appointment.

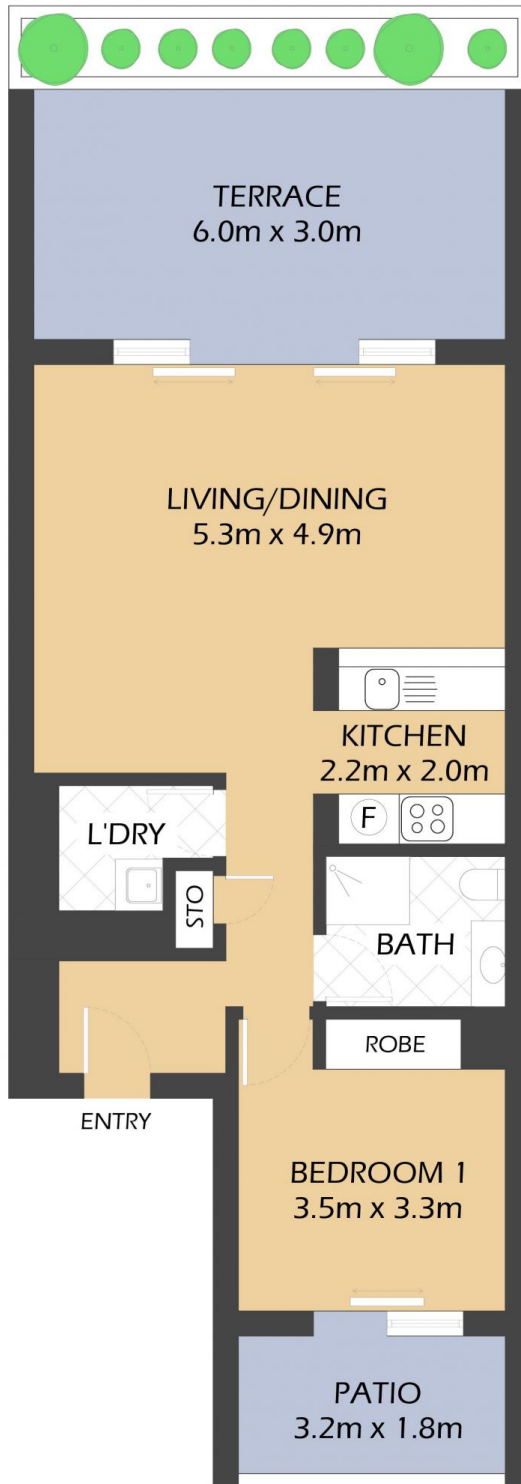


SECURE UNDERCOVER
CAR SPACE
5.5m x 2.5m
(NOT ACTUAL LOCATION)

102/7 YARA AVENUE

ROZELLE

"Equinox" Balmain Shores



*FLOOR PLAN MEASUREMENTS ARE APPROXIMATE AND FOR ILLUSTRATIVE PURPOSES ONLY.

BALMAINRealty

9818 8888

BALMAINREALTY.COM