



505/31 Margaret Street Rozelle NSW

2 🛏 2 🚿 2 🚗

Positioned on the absolute waterfront of 'The Moorings' in the highly sought after 'Balmain Shores' complex, this magnificent apartment has been extensively renovated with no expense spared.

The property showcases oversized interiors bathed in natural light from a commanding top floor, north-east corner position with windows to the front and sides taking in breathtaking harbour views.

Found just a short stroll from Darling Street's cafes & restaurants, wine bars & pubs, boutique shopping, waterfront parkland & walkways, local schools, express public transport, with access to resort style amenities.

Property features include;

Price : SOLD AT AUCTION \$2,810,000
Building Size : 155 sqm
View : <https://www.balmainrealty.com/1P3249>



Scott Robertson
(02) 9818 8888



Hayden Hedley
(02) 9818 8888



PROPERTY DETAILS

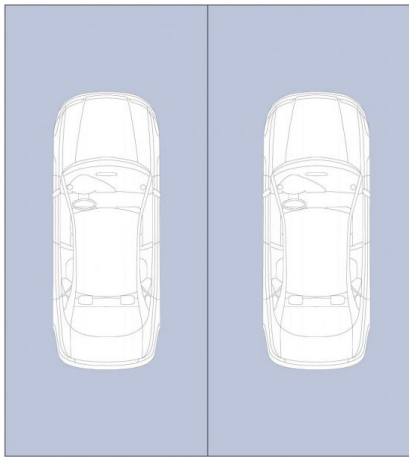
AREA	
Total	155sqm
Internal	100sqm
External	22sqm
Parking	33sqm

OUTGOINGS

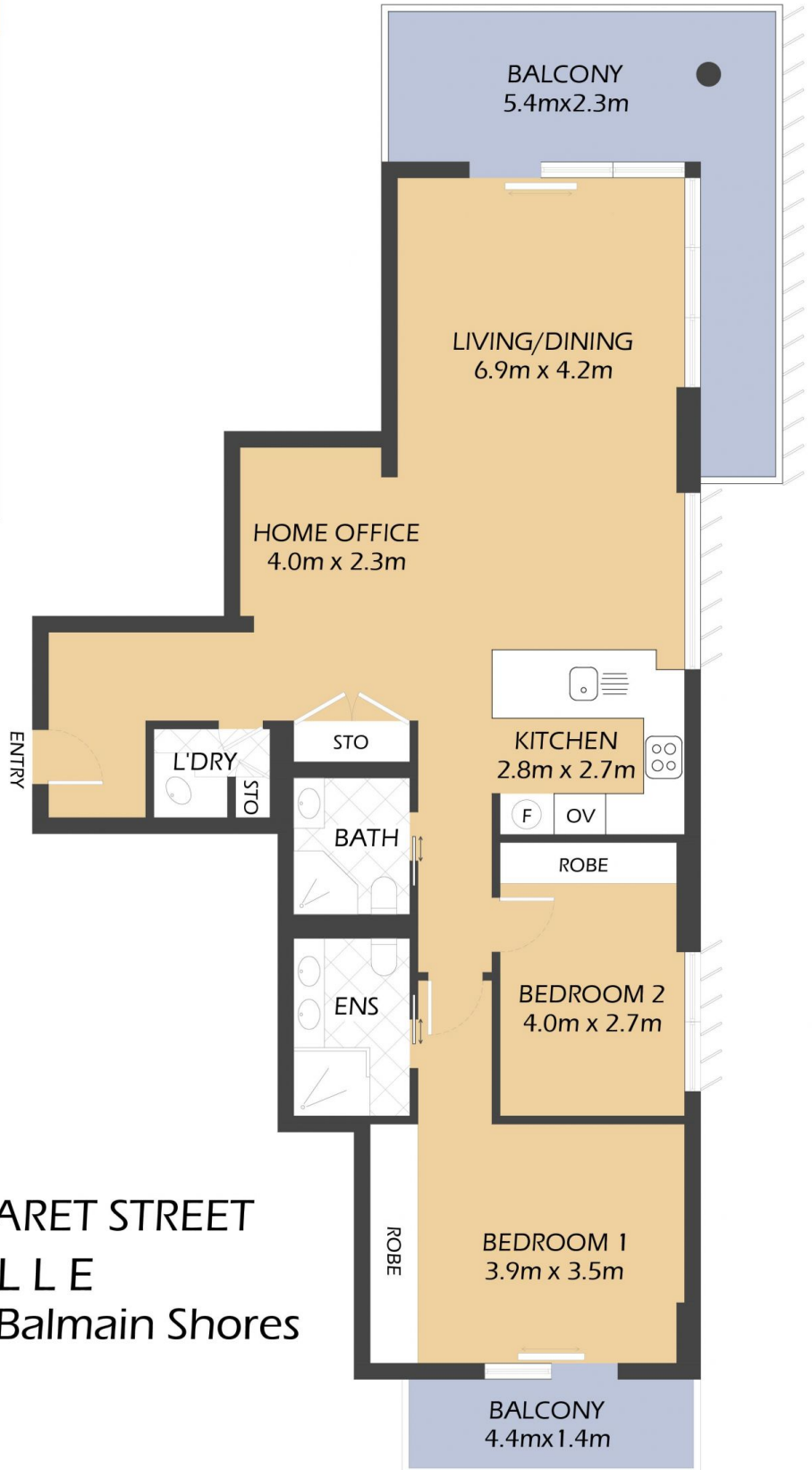
Strata	\$2,126pq
Council	\$331pq
Water	\$151pq

INSPECT

As advertised or by private appointment.



SECURE UNDERCOVER
CAR SPACES
5.9m x 5.3m
(NOT ACTUAL LOCATION)



505/31 MARGARET STREET
ROZELLE
"The Moorings" Balmain Shores



*FLOOR PLAN MEASUREMENTS ARE APPROXIMATE AND FOR ILLUSTRATIVE PURPOSES ONLY.

BALMAINRealty

9818 8888

BALMAINREALTY.COM