



906/27 Margaret Street Rozelle NSW

1  1  1 

Situated within the tightly held Quarterdeck building within the 'Balmain Shores' harbourside complex, this one bedroom apartment offers spacious open plan interiors that flow onto a covered balcony with a private and leafy park reserve outlook.

Residents have access to a number of amenities including a modern well equipped gymnasium, heated indoor lap pool, outdoor plunge pool, spa, saunas with the added benefit of being on the doorstep of the infamous 'Bay Run', offering over 8kms of walkways/cycleways along the harbour foreshore.

Ideal investment opportunity, currently leased at \$520 per week until January 2023.

Property features include;

Price : Asking Price \$945,000
Building Size : 74 sqm
View : <https://www.balmainrealty.com/1P3253>



Scott Robertson
(02) 9818 8888



Hayden Hedley
(02) 9818 8888

PROPERTY DETAILS

AREA

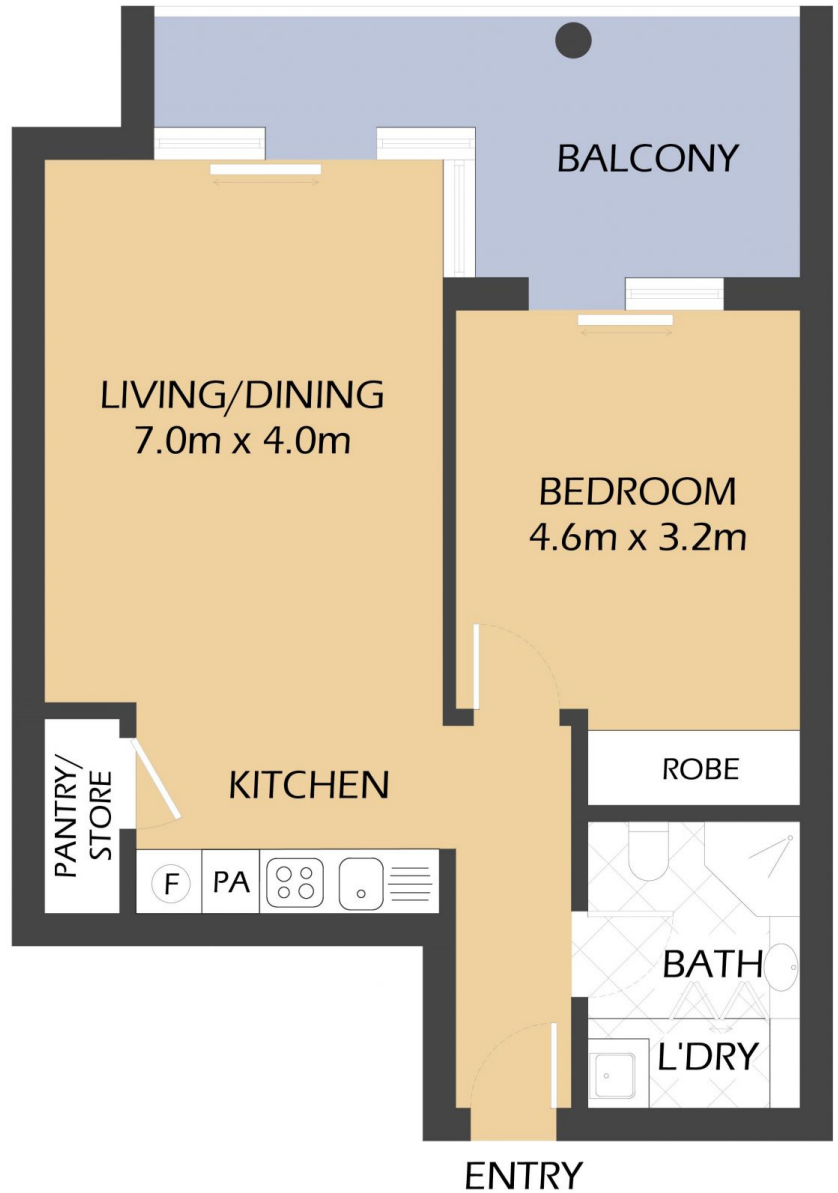
Total	74sqm
Internal	50sqm
Balcony	10sqm
Parking	14sqm

OUTGOINGS

Strata	\$960p/q
Council	\$331p/q
Water	\$152p/q

INSPECT

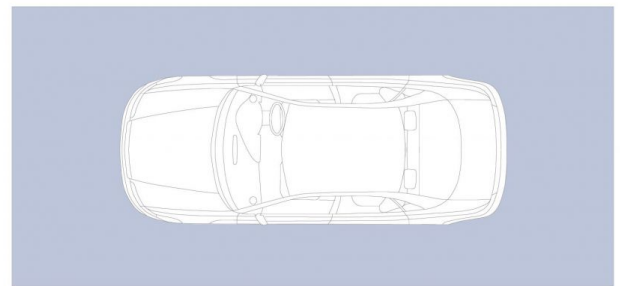
As advertised or by private appointment.



906/27 MARGARET STREET

ROZELLE

"Quarterdeck" Balmain Shores



SECURED COVERED CAR SPACE
(NOT ACTUAL LOCATION)



*FLOOR PLAN MEASUREMENTS ARE APPROXIMATE AND FOR ILLUSTRATIVE PURPOSES ONLY.

BALMAINRealty

9818 8888

BALMAINREALTY.COM