






3/29 Lilyfield Road Rozelle NSW

2  **1**  **1** 

Offering spacious open plan living that flows onto a large sun-drenched north facing courtyard overlooking gardens, this fully renovated apartment is just a short stroll to express public transport including buses & light rail, parkland & Rozelle village offering an abundance of cafes, wine bars, pubs & eateries.

An excellent opportunity for the first home buyer or astute property investor.

Property features include;

- Opulent finishes featuring tiled floors throughout, stone benchtops, modern lighting, slimline roller blinds & reverse cycle air-conditioning
- Excellent indoor/outdoor living & cross flow ventilation with a garden terrace to the front off the living & balcony off

Price : SOLD \$1,330,000
Building Size : 129 sqm
View : <https://www.balmainrealty.com/1P3267>



Scott Robertson
(02) 9818 8888



Hayden Hedley
(02) 9818 8888

PROPERTY DETAILS

AREA

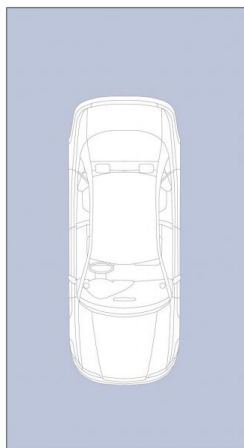
Total	129sqm
Internal & External	113sqm
Garage	16sqm

OUTGOINGS

Strata	\$1313p/q
Council	\$331p/q
Water	\$157p/q

INSPECT

As advertised or by private appointment.



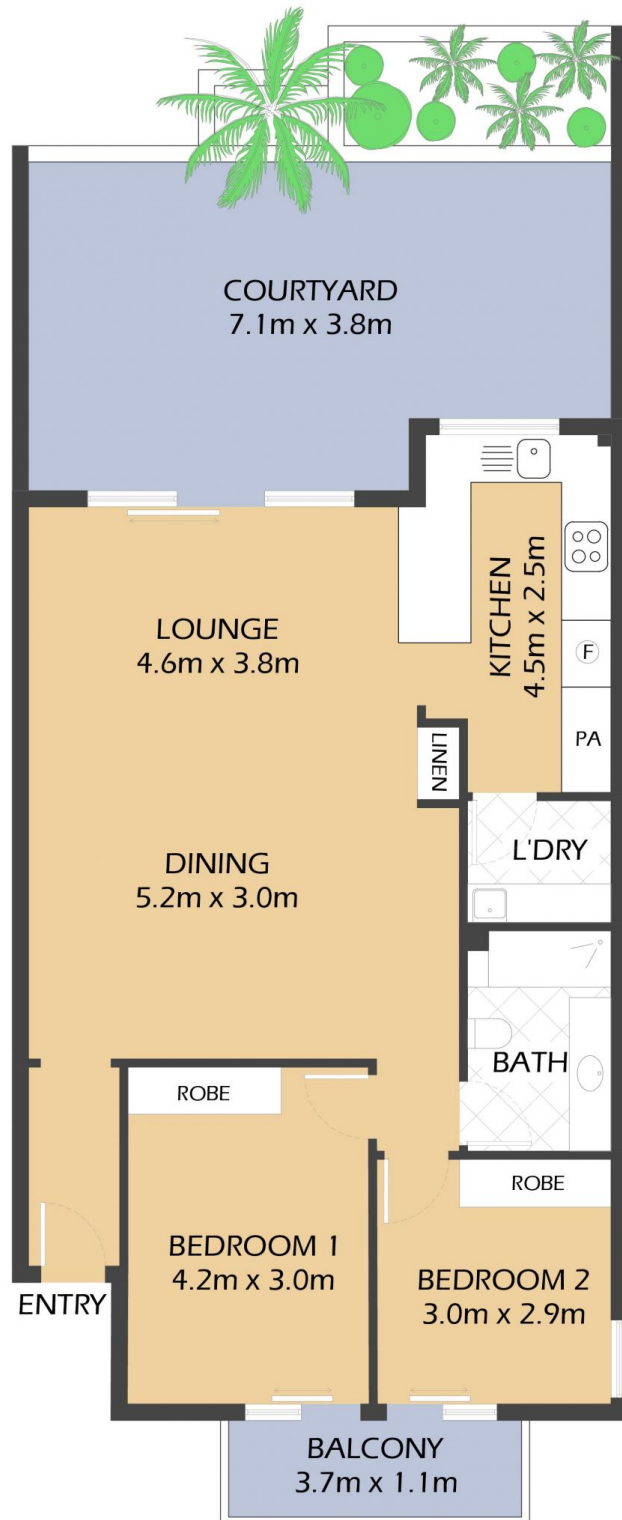
SECURE LOCKUP GARAGE
5.5m x 3.0m
(NOT ACTUAL LOCATION)



3/29 LILYFIELD ROAD
ROZELLE



*FLOOR PLAN MEASUREMENTS ARE APPROXIMATE AND FOR ILLUSTRATIVE PURPOSES ONLY.



BALMAINRealty

9818 8888
BALMAINREALTY.COM