



Level 1/5 Wulumay Close Rozelle NSW

2 🛏 2 🚿 2 🚗

Luxuriously Renovated Two Bedroom Apartment with Study, Two Courtyards & Double Lock-Up Garage

Set over an impressive 236sqm of living space with front & rear courtyards overlooking beautiful gardens, this recently fully renovated two bedroom apartment features an additional study/ home office with large open plan living & dining that flows onto a large sun-filled north facing courtyard.

Property Features:

- Oversized apartment featuring house like proportions set over 236sqm
- Additional study/home office, library or sitting room set off the living areas
- Large open plan living/dining spaces that flow onto a

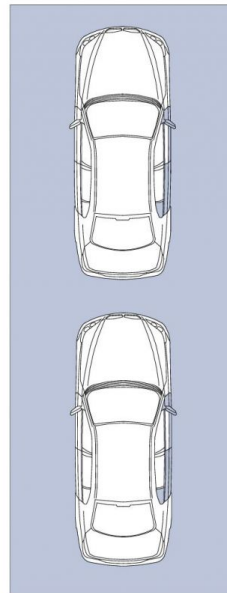
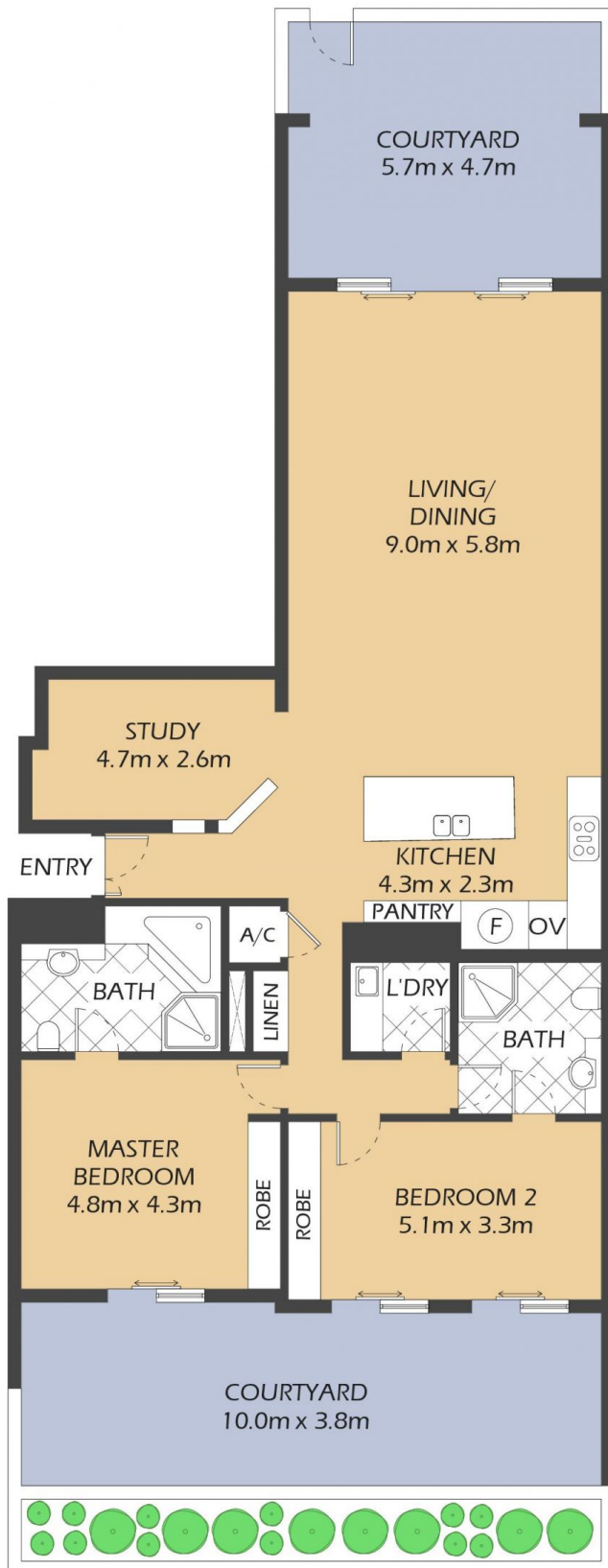
Price : Leased! \$1,200 per week
Building Size : 280 sqm
View : <https://www.balmainrealty.com/1P3272>



James Middleton
(02) 9818 8888



Bronte Brown
(02) 9818 8888



LOCK UP GARAGE
10.0m x 4.0m
(NOT ACTUAL LOCATION)

165/5 Wulumay Close ROZELLE

"The Escarpments" - Balmain Cove

PROPERTY DETAILS

AREA

Total	280sqm
Internal & Courtyards	236sqm
Lock Up Garage	44sqm

OUTGOINGS

Strata	\$2,665p/q
Council	\$310p/q
Water	\$147p/q

INSPECT

As advertised or by private appointment.

1m 2m 5m

* FLOOR PLAN MEASUREMENTS ARE APPROXIMATE AND FOR ILLUSTRATIVE PURPOSES ONLY.

BALMAINRealty

9818 8888
BALMAINREALTY.COM