



504/32 Warayama Place Rozelle NSW

1 1 1

Situated within the prized 'Balmain Shores' resort like complex, this stylishly appointed one bedroom apartment offers a larger than average floor plan and features freshly painted interiors, new blinds & plush carpet throughout.

Price : SOLD \$790,000

View : <https://www.balmainrealty.com/1P2870>

Located just a moment's stroll to Bridgewater Park and the harbour foreshore with the Bay Run, plus it's conveniently located to neighbourhood cafes & restaurants with express city transport only a short stroll from your doorstep.



Scott Robertson
(02) 9818 8888



Hayden Hedley
(02) 9818 8888

Property features include;

- Spacious open plan living and dining area that opens onto a covered balcony with north-east aspect
- Freshly painted interiors, new roller blinds, plush new carpet & reverse cycle air-conditioning to the living & bedroom

PROPERTY DETAILS

AREA

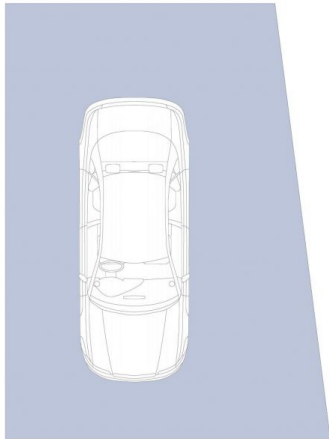
Total	87sqm
Internal	59sqm
Balconies	8sqm
Parking	20sqm

OUTGOINGS

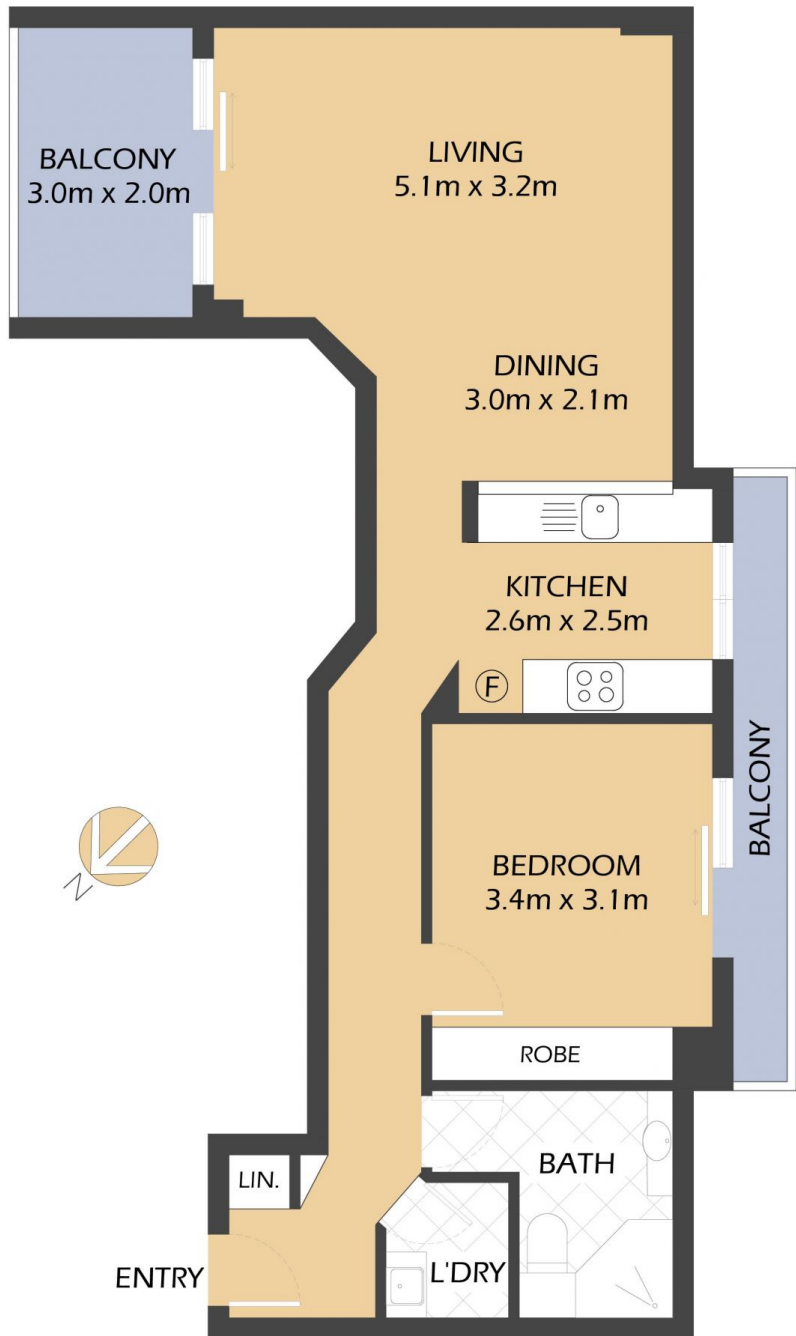
Strata	\$1132p/q
Council	\$331p/q
Water	\$151p/q

INSPECT

As advertised or by private appointment.



SECURE UNDERCOVER
CAR SPACE
5.5m x 3.4m
(NOT ACTUAL LOCATION)



504/32 Warayama Place

ROZELLE

"Anchorage" Balmain Shores



*FLOOR PLAN MEASUREMENTS ARE APPROXIMATE AND FOR ILLUSTRATIVE PURPOSES ONLY.

BALMAINRealty

9818 8888

BALMAINREALTY.COM