



Level 5/30 Warayama Place Rozelle NSW

2 2 2

Modern Two Bedroom Apartment with Stunning Views in the Popular Balmain Shores!

Price : Leased! \$860 per week

View : <https://www.balmainrealty.com/1P3306>

PROPERTY FEATURES:

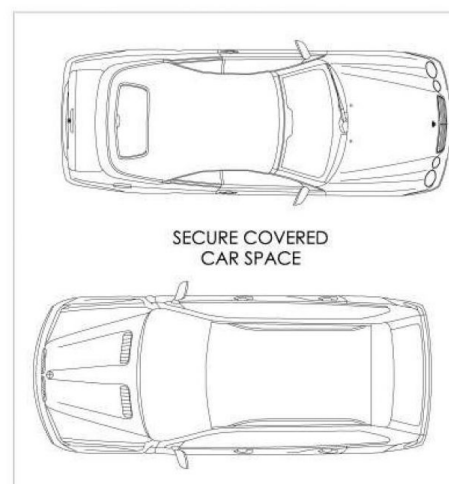
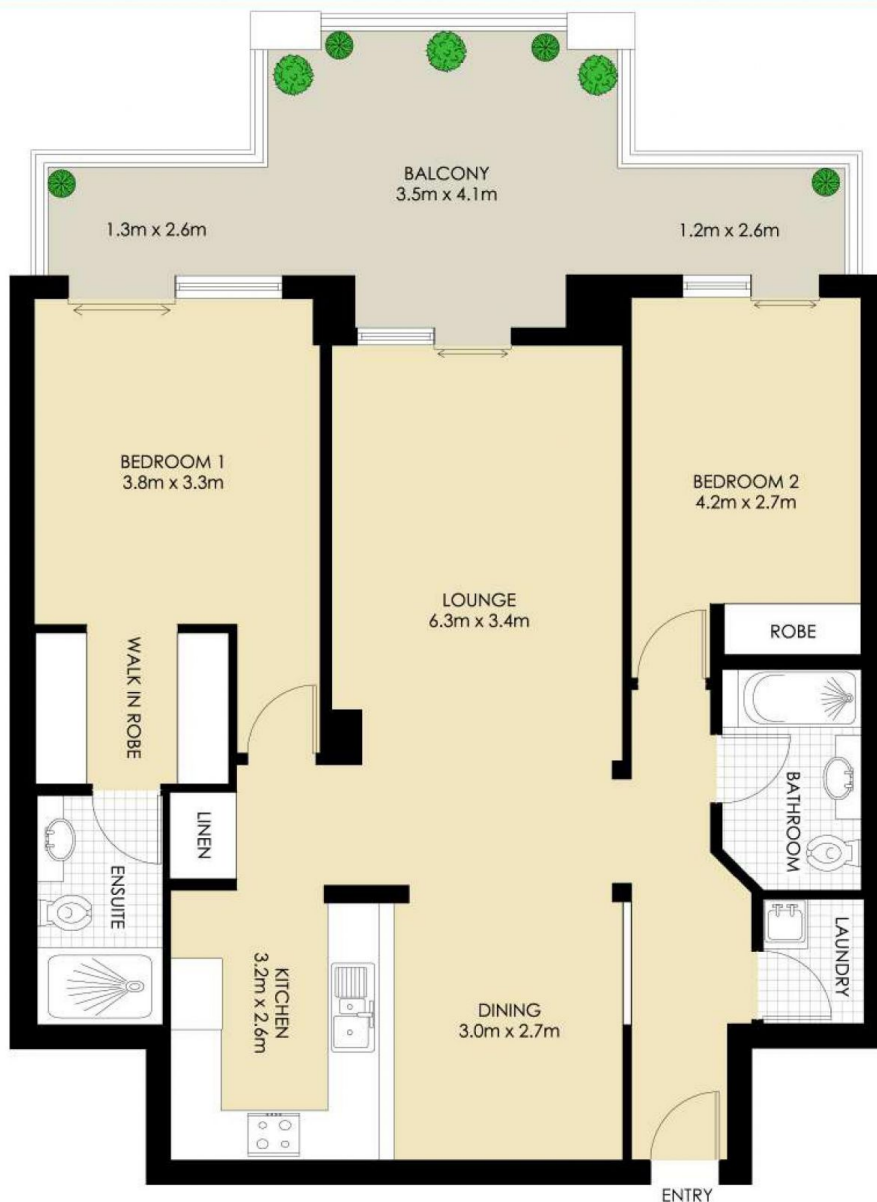
- Spacious open plan living and dining
- Large entertaining balcony with water views
- Main bedroom with mirrored built-in wardrobes & ensuite bathroom
- Modern kitchen with stainless steel appliances, gas cooking & dishwasher
- Internal laundry with clothes dryer
- Ducted air-conditioning throughout
- Security parking for 2 vehicles with direct lift access to apartment level
- Short distance from the CBD, ideal location for public



Jenny Chen-Robertson
(02) 9818 8888



Aimee Ryan
9818 8888



(NOT ACTUAL LOCATION)

*PLANS SHOWN ONLY INDICATIVE OF LAYOUT. DIMENSIONS ARE APPROXIMATE.