



## 304/41 Terry Street Rozelle NSW

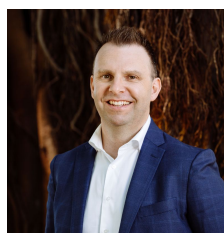
1 🛏 1 🚿 1 🚗

Situated within the highly sought after 'Atelier' building, this top floor, corner positioned modern apartment is just a moments stroll from express city transport, the waterfront with Bridgewater Park & Bay Run, as well as being conveniently located having local eateries and shops at your doorstep.

**Price** : SOLD \$880,000  
**Building Size** : 87 sqm  
**View** : <https://www.balmainrealty.com/1P3355>

### PROPERTY FEATURES:

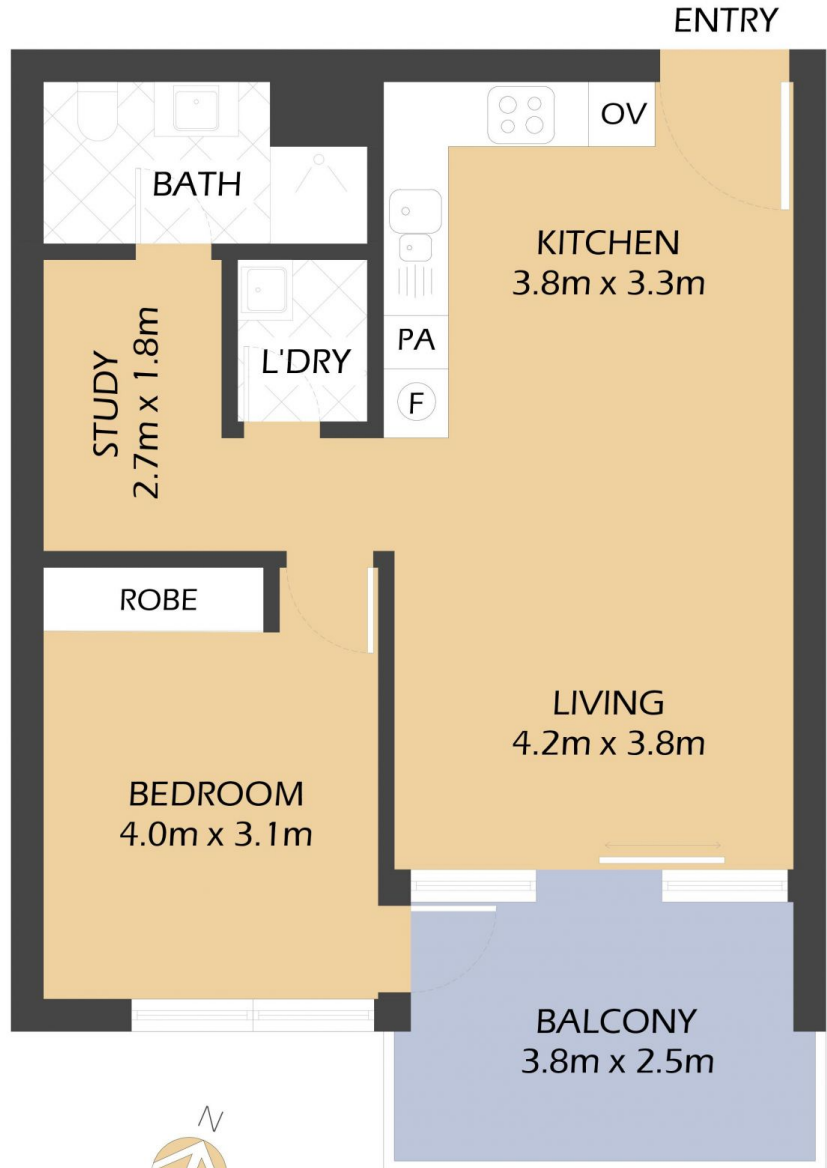
- Spacious open plan living that flows onto a large balcony
- Stylishly appointed kitchen with stone benchtops, pull out pantry & stainless appliances including gas cooktop, oven, rangehood & dishwasher
- Additional study/ home office space for the professional on the go
- Spacious bedroom with mirrored built-in wardrobes and balcony access



**Scott Robertson**  
(02) 9818 8888



**Hayden Hedley**  
(02) 9818 8888



304/41 TERRY STREET  
ROZELLE  
"Atelier"



\*FLOOR PLAN MEASUREMENTS ARE APPROXIMATE AND FOR ILLUSTRATIVE PURPOSES ONLY.

PROPERTY DETAILS

AREA

Total	87sqm
Internal & External	64sqm
Parking & Storage Cage	23sqm

OUTGOINGS

Strata	\$857p/q
Council	\$334p/q
Water	\$151p/q

**BALMAIN**Realty

9818 8888

BALMAINREALTY.COM