



## Level 5/11 Warayama Place Place Rozelle NSW

1 1 1

Top Floor Waterfront Studio Apartment with Separate Bedroom Area in the Popular 'Balmain Shores' Complex

**Price** : Leased! \$515 per week

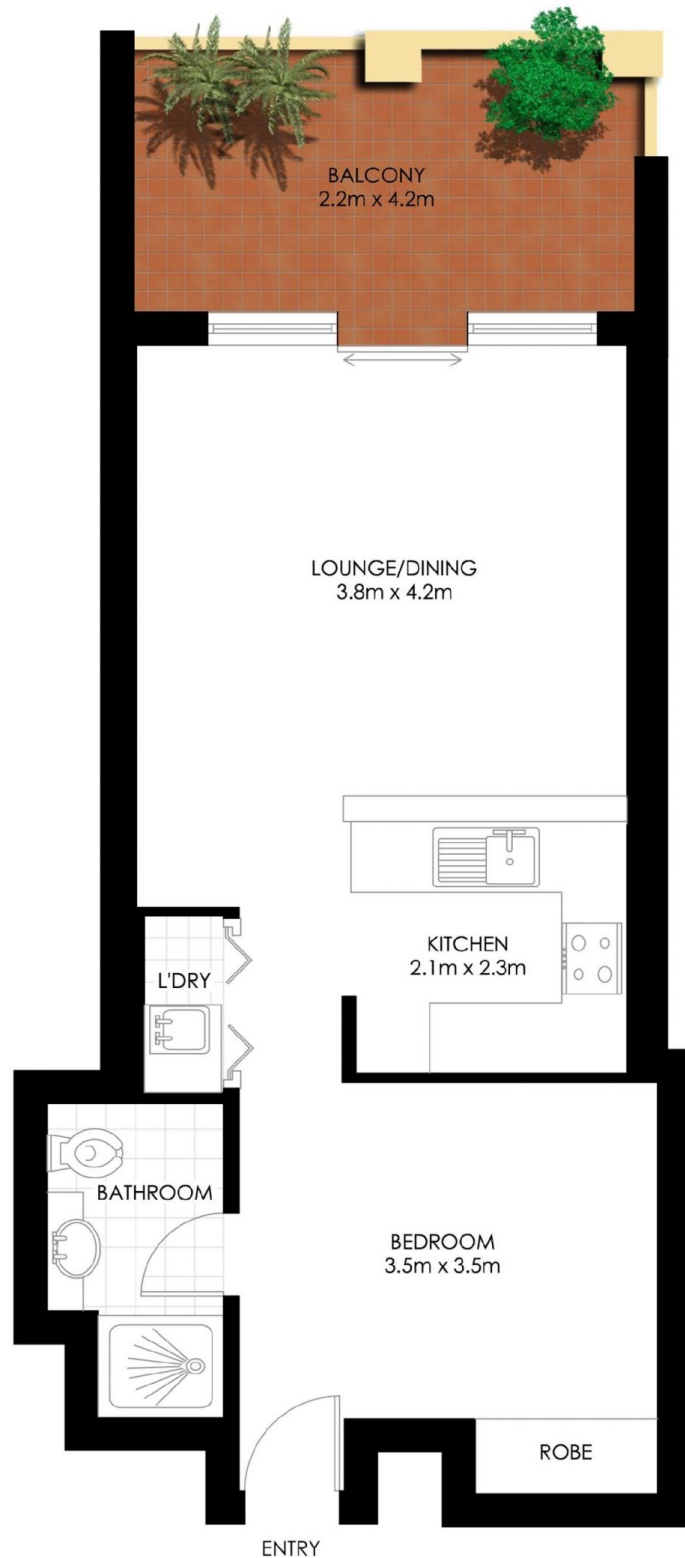
**View** : <https://www.balmainrealty.com/1P3365>

### PROPERTY FEATURES:

- Spacious open plan living & large balcony set over 50sqm in total size
- Updated paint & carpet throughout
- Bright & sunny top floor position
- Video intercom
- Split-system air-conditioning in lounge
- Stunning north-easterly water views across Iron Cove Bay
- Gourmet kitchen with gas cooking & oven and dishwasher
- Large bedroom area with built-in wardrobes
- Stylish modern bathroom
- Separate internal laundry with clothes dryer
- One undercover car space with direct lift access to



**Jenny Chen-Robertson**  
(02) 9818 8888



## ROZELLE 11 WARAYAMA PLACE "North Point" - Balmain Shores

\*PLANS SHOWN ONLY INDICATIVE OF LAYOUT. DIMENSIONS ARE APPROXIMATE.