



Level 1/8 Yara Avenue Rozelle NSW

1  1  1 

Immaculate Ground Floor Apartment With Courtyard and Parking in Balmain Shores

Price : Leased! \$550 per week

View : <https://www.balmainrealty.com/1P3405>

PROPERTY FEATURES:

- Brand new carpet & freshly painted interiors throughout
- Reverse cycle air-conditioning in living area
- Spacious open plan interiors that open on to your own garden courtyard
- Generous sized bedroom with mirrored built-in wardrobes & direct access onto courtyard
- Stylishly appointed kitchen featuring stainless steel gas cooktop, oven, rangehood & dishwasher
- Modern bathroom
- Internal laundry with clothes dryer and storage cupboard
- Secure under cover car space
- Easy walk-in access to apartment via security door



Jenny Chen-Robertson
(02) 9818 8888

PROPERTY DETAILS

AREA

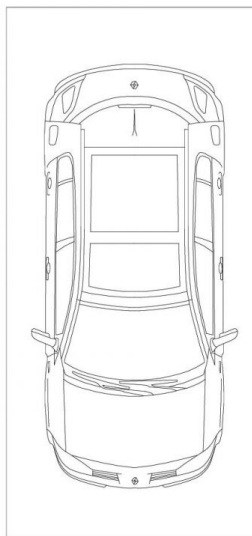
Total	79sqm
Internal	50sqm
Courtyard	14sqm
Car Space	15sqm

OUTGOINGS

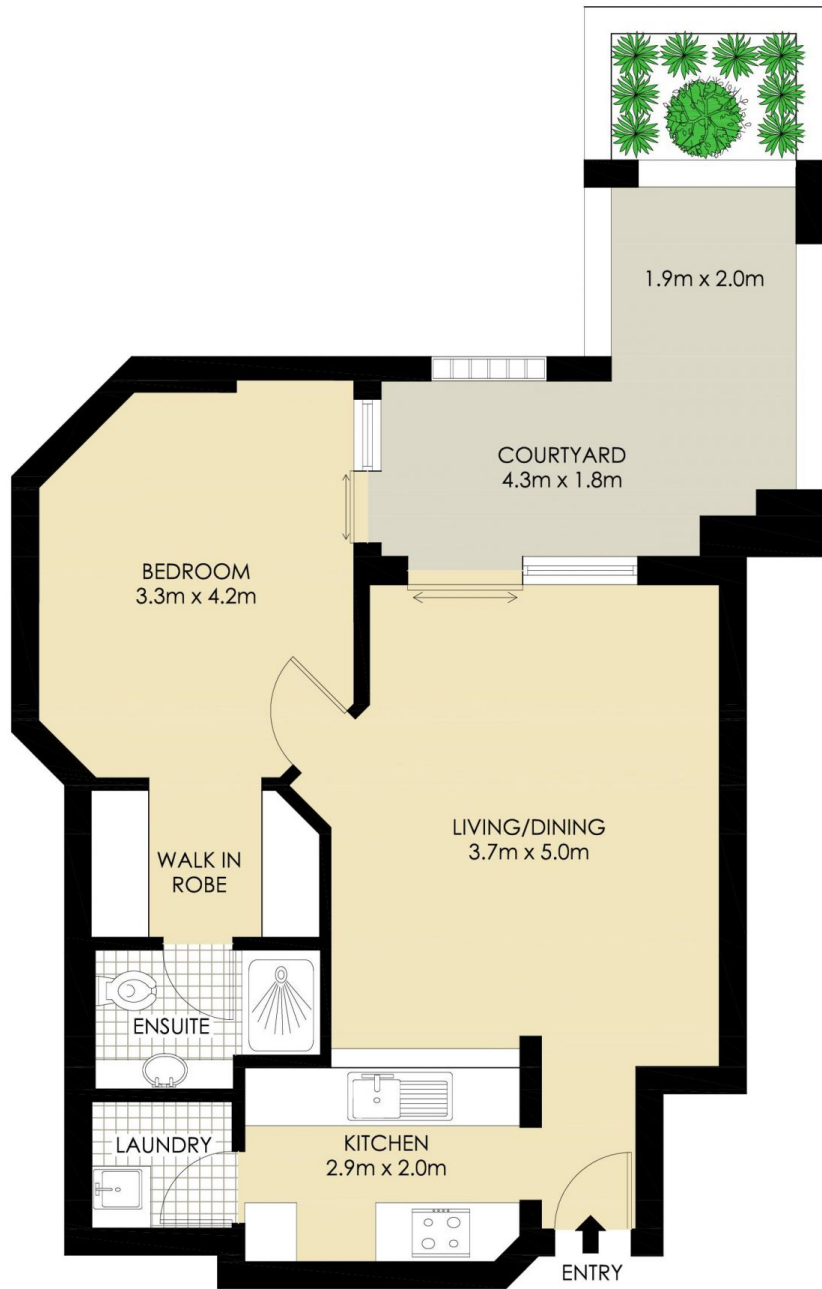
Strata	\$1,380pq
Council	\$284pq
Water	\$168pq

INSPECT

As advertised or by appointment



SECURE COVERED
CAR SPACE
5.5m x 2.6m
(NOT ACTUAL LOCATION)



ROZELLE
106/8 YARA AVENUE
"Pinnacle" - Balmain Shores



*PLANS SHOWN ONLY INDICATIVE OF LAYOUT. DIMENSIONS ARE APPROXIMATE.

BALMAIN Realty

1300 REALTY
9818 8888
balmainrealty.com