



**502/27 Margaret Street Rozelle NSW**

1 1

Situated within the highly sought after 'Balmain Shores' complex offering access to resort style amenities, this stylishly appointed one bedroom apartment features an oversized 20sqm covered balcony with leafy outlook and lovely sun-filled interiors from a northerly aspect.

**Price** : SOLD \$817,000  
**Building Size** : 70 sqm  
**View** : <https://www.balmainrealty.com/1P3397>

Residents of the complex have access to a number of resort like amenities including a modern well equipped gymnasium, heated indoor lap pool, outdoor plunge pool, spa & saunas, along with being just a moments stroll to the popular 'Bay Run' along the harbour foreshore, local cafes & eateries, pubs, wine bars and express public transport.



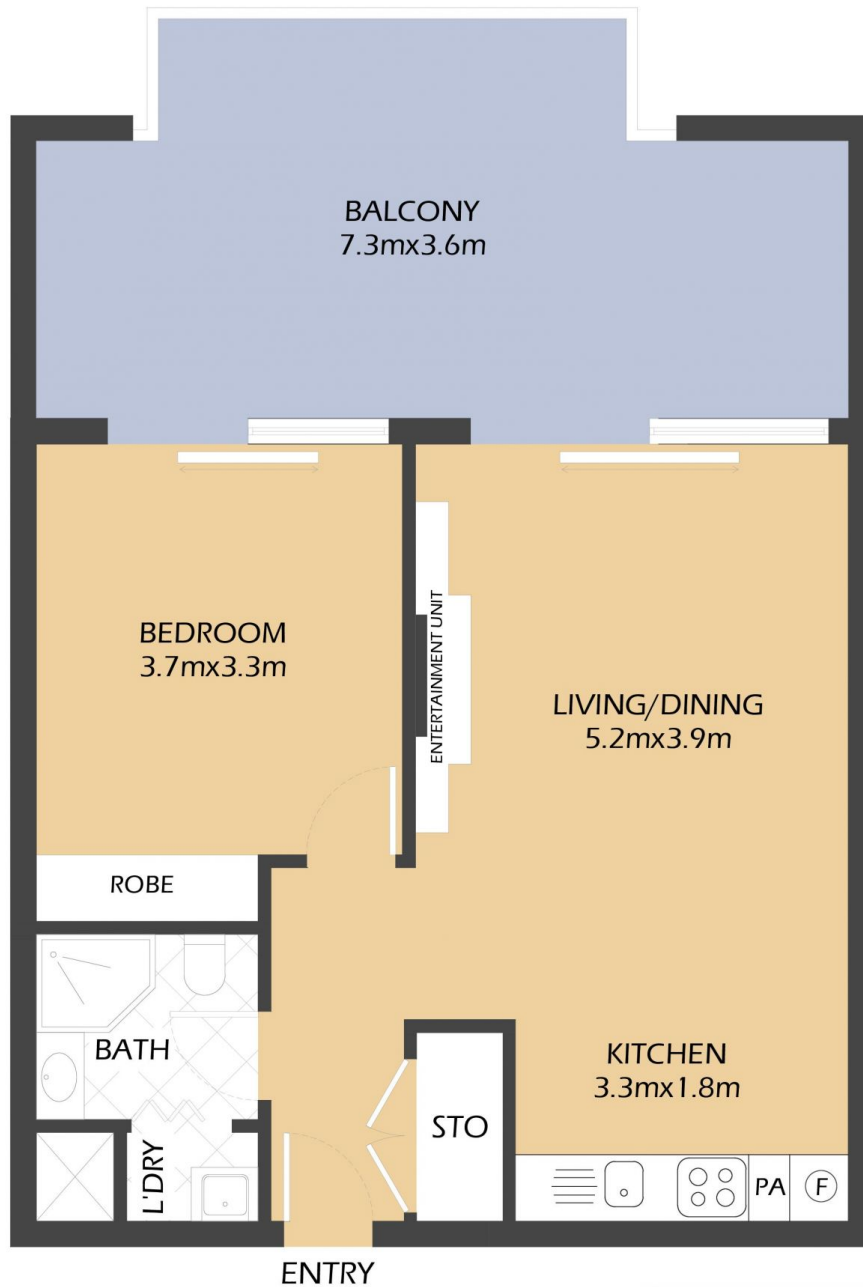
**Scott Robertson**  
(02) 9818 8888



**Hayden Hedley**  
(02) 9818 8888

#### PROPERTY FEATURES:

- Spacious open plan living & dining area with built-in entertainment unit, opening onto an extensive 20sqm



502/27 MARGARET STREET  
ROZELLE  
'Quarterdeck'

PROPERTY DETAILS

AREA	
Total	70sqm
Internal	50sqm
External	20sqm

OUTGOINGS

Strata	\$985pq
Council	\$331pq
Water	\$150pq



\*FLOOR PLAN MEASUREMENTS ARE APPROXIMATE AND FOR ILLUSTRATIVE PURPOSES ONLY.

**BALMAIN**Realty

9818 8888

BALMAINREALTY.COM