



104/1 Warayama Place Rozelle NSW

1 1 1

Parkfront One Bedroom Apartment with Water Views & Tranquil Garden Outlook

Overlooking Bridgewater Park and taking in magical water views, this one bedroom apartment situated in the Regatta building of the 'Balmain Shores' waterfront complex offers spacious interiors that lead onto a large covered balcony with tranquil garden outlook.

Residents have access to a number of amenities including indoor heated lap pool, outdoor plunge pool, modern well equipped gymnasium, spa & saunas, with the added benefit of being on the doorstep of the Bay Run & an abundance of waterfront parkland to enjoy the outdoor lifestyle this location has to offer.

Ideal ready made investment opportunity currently leased

Price : SOLD OFF-MARKET \$1,012,500
Building Size : 76 sqm
View : <https://www.balmainrealty.com/1P3379>



Scott Robertson
(02) 9818 8888



Hayden Hedley
(02) 9818 8888

PROPERTY DETAILS

AREA

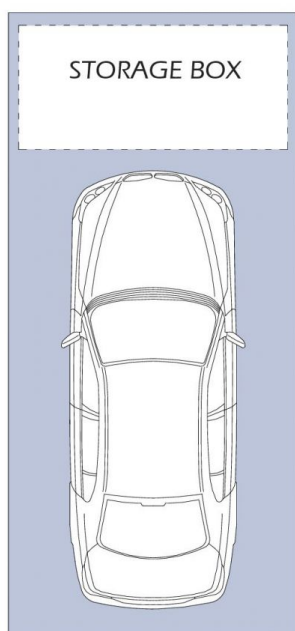
Total	76sqm
Internal	54sqm
Balcony	7sqm
Car Space	15sqm

OUTGOINGS

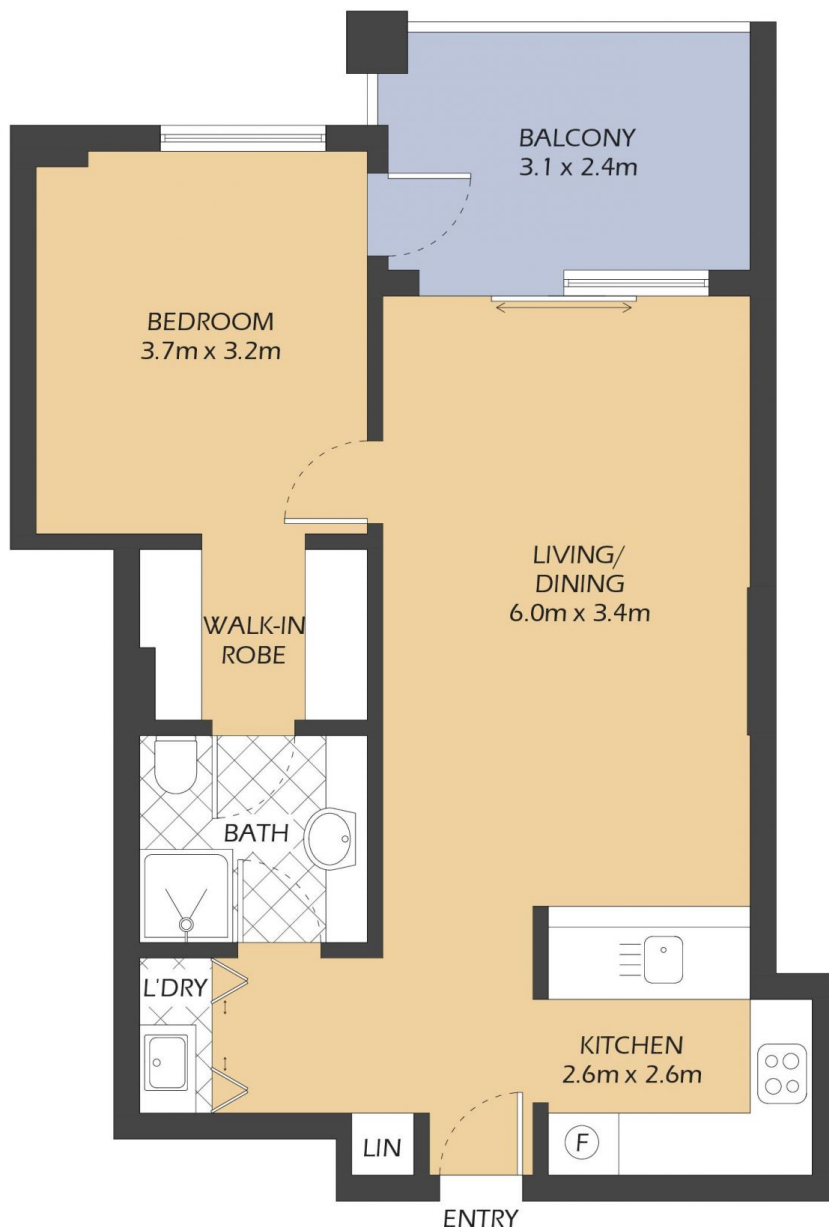
Strata	\$1239p/q
Council	\$331p/q
Water	\$149p/q

INSPECT

As advertised or by private appointment.



SECURE COVERED
CAR SPACE
5.7x2.75m
(NOT ACTUAL
LOCATION)



104/1 WARAYAMA PLACE ROZELLE

"Regatta" - Balmain Shores

0.5m 1m 2m 5m

* FLOOR PLAN MEASUREMENTS ARE APPROXIMATE AND FOR ILLUSTRATIVE PURPOSES ONLY.

BALMAINRealty

9818 8888
BALMAINREALTY.COM