



Level 2/41 Terry Street Rozelle NSW

1 1 1

Modern Studio Apartment with Secure Parking, Storage Cage

This over-sized studio apartment found within the popular 'Atelier' complex is situated just a moments stroll from Darling Street 's buzzing wine bars, cafes, restaurants & pubs, with express public transport on your doorstep as well as the 'Bay Run' along the harbour foreshore.

PROPERTY FEATURES:

- Spacious open plan living that opens directly onto a large balcony
- Modern kitchen featuring granite benchtops, pull out pantry & stainless steel appliances including gas cooktop, oven, rangehood & dishwasher
- Reverse cycle air-conditioning to the living area

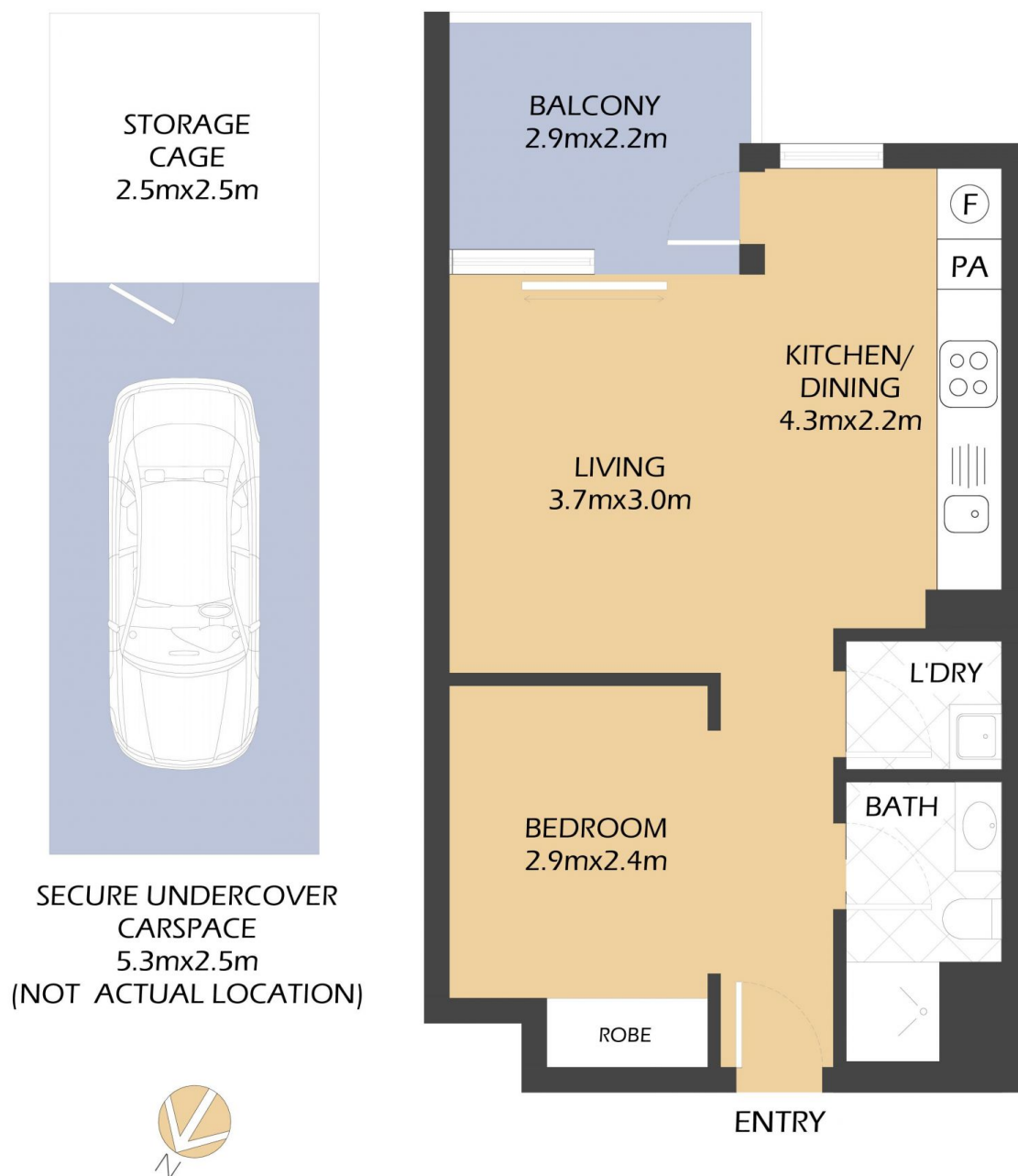
Price : Leased! \$500 per week
Building Size : 64 sqm
View : <https://www.balmainrealty.com/1P3451>



Jo Kennedy



Suzanne MacMillan
(02) 9818 8888



201/41 TERRY STREET
ROZELLE
'Atelier'



*FLOOR PLAN MEASUREMENTS ARE APPROXIMATE AND FOR ILLUSTRATIVE PURPOSES ONLY.

PROPERTY DETAILS	
AREA	
Total	64sqm
Internal & External	45sqm
Parking & Storage	19sqm
OUTGOINGS	
Strata	\$685pq
Council	\$331pq
Water	\$150pq

BALMAINRealty

9818 8888
BALMAINREALTY.COM