



**107/47-51 Lilyfield Road Rozelle NSW**

**1  1 **

**\*\*\*ATTENTION FIRST HOME BUYERS\*\*\***

The First Home Buyers Assistance Scheme has expanded. For contracts that exchange on or after 1 July 2023, eligible first home buyers will receive an exemption from transfer duty for purchases of new and existing homes up to \$800,000 and a concessional rate of duty for homes up to \$1,000,000.

The residence requirement for the First Home Buyers Assistance Scheme has increased to 12 months for contracts that exchange on or after 1 July 2023.

\*Source

<https://www.revenue.nsw.gov.au/grants-schemes/first-home-buyer/assistance-scheme>

**Price** : SOLD \$630,000

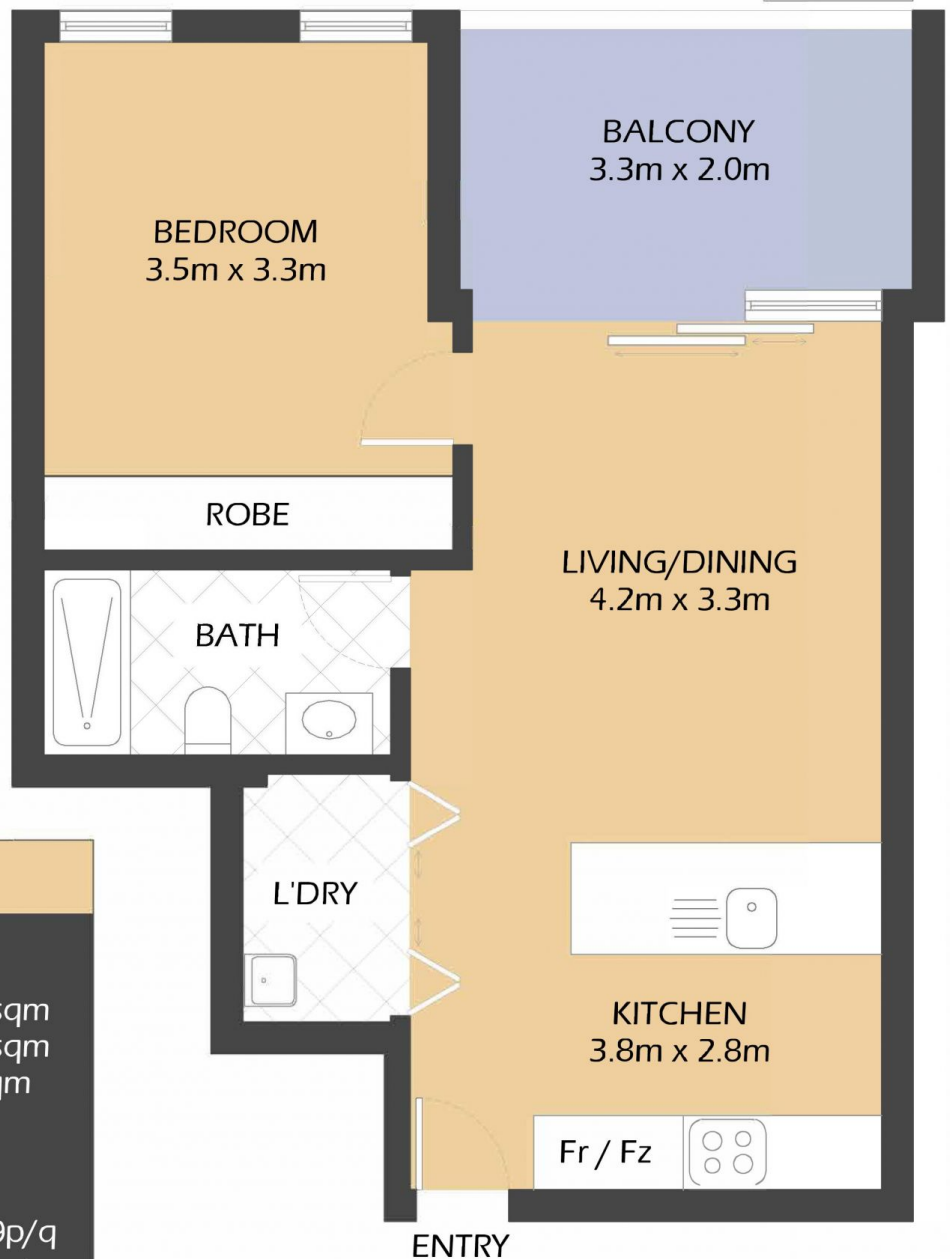
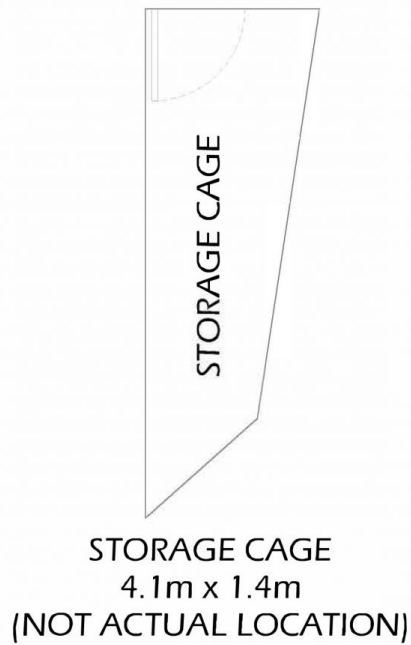
**Building Size** : 58 sqm

**View** : <https://www.balmainrealty.com/1P3453>



**Scott Robertson**  
**(02) 9818 8888**

Situated within the 'Easton' boutique development comprising of only 32 apartments completed in late 2015, this modern one bedroom apartment features spacious



#### PROPERTY DETAILS

##### AREA

Total	58sqm
Internal & Balcony	54sqm
Storage Cage	4sqm

##### OUTGOINGS

Strata	\$1069p/q
Council	\$338p/q
Water	\$167p/q

##### INSPECT

As advertised or by  
private appointment.

107/47-51 LILYFIELD ROAD

ROZELLE

"EASTON"

1m

2m

5m

\*FLOOR PLAN MEASUREMENTS ARE APPROXIMATE AND FOR ILLUSTRATIVE PURPOSES ONLY.

**BALMAIN**Realty

9818 8888

BALMAINREALTY.COM