



## 52/3 Wulumay Close Rozelle NSW

3 2 2

Top Floor Oversized Three Bedroom Apartment with North-East Facing Balcony. The perfect sun-filled north-east facing property offering an abundance of natural light throughout, this magnificent top floor corner apartment offers house like proportions with contemporary interiors and large wrap around balcony.

**Price** : Leased! \$1,340 per week

**View** : <https://www.balmainrealty.com/1P3472>

### PROPERTY FEATURES:

- Family sized open plan living that flows seamlessly onto a spacious north-east facing wrap around balcony with water views across Iron Cove Bay
- Ducted air-conditioning throughout (cooling only, no heating)
- Well appointed gourmet kitchen with pantry, granite bench tops, gas cooktop, oven, rangehood & dishwasher
- King sized master bedroom features walk-in wardrobe,

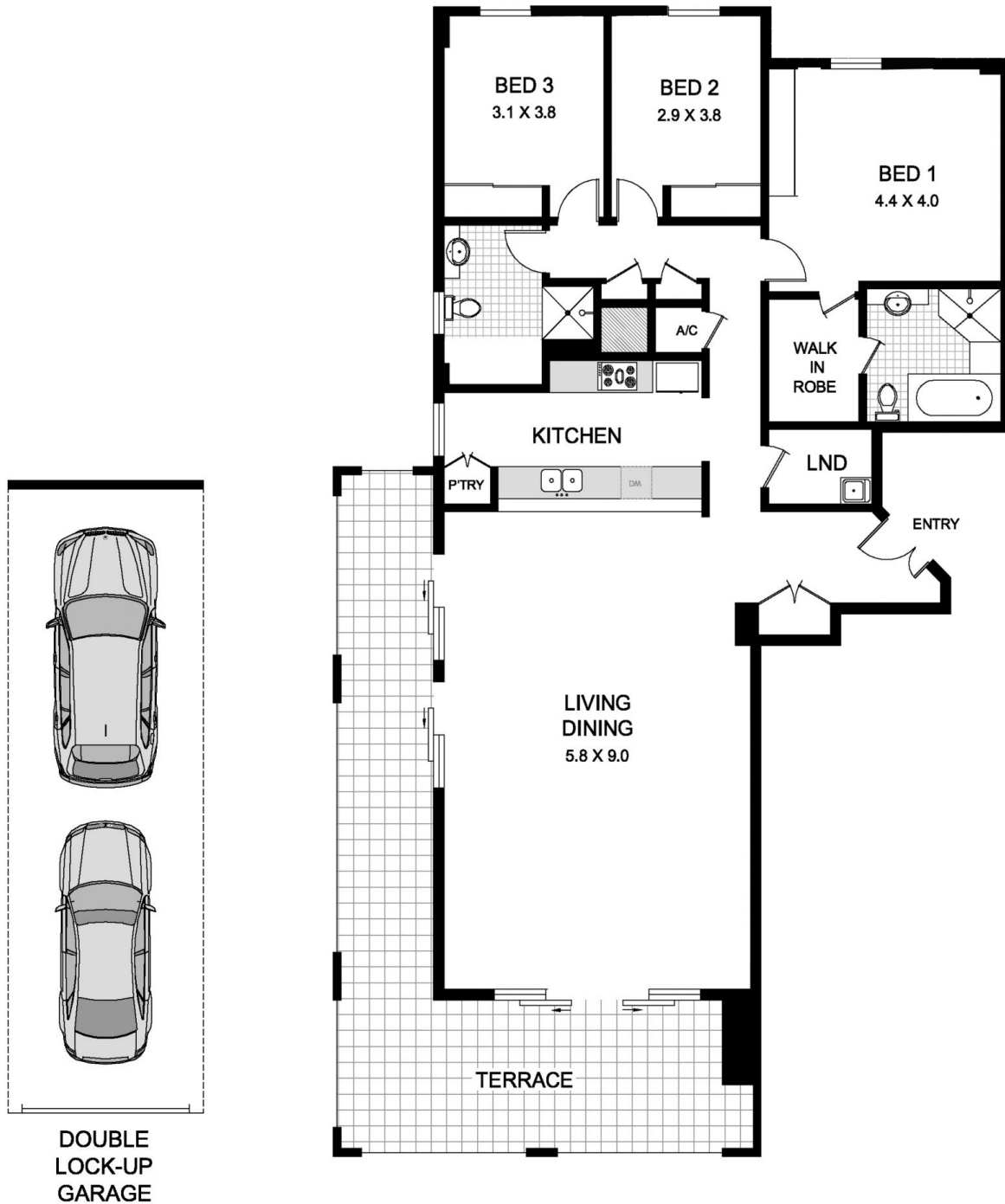


**Jenny Chen-Robertson**  
(02) 9818 8888



**Suzanne MacMillan**  
(02) 9818 8888

## 52/3 Wulumay Close 'The Annex, Balmain Cove' Rozelle



\*NOTE: ALL DIMENSIONS SHOWN ARE APPROXIMATE AND SHOULD ONLY BE USED AS A GUIDE. NOT TO SCALE.