



165/5 Wulumay Close Rozelle NSW

2 2 2

Set over an impressive 236sqm living space with front & rear courtyards overlooking beautiful gardens, this recently fully renovated two bedroom apartment features an additional study/ home office with large open plan living & dining that flows onto a large sun-filled north facing courtyard.

Found within the tightly held 'Balmain Cove' resort like complex surrounded by manicured gardens, this stunning property offers a lifestyle opportunity second to none. Residents can enjoy use of swimming pools, a well equipped gymnasium with an optional marina berth facility for the boating enthusiast.

PROPERTY FEATURES:

- Oversized apartment featuring house like proportions set

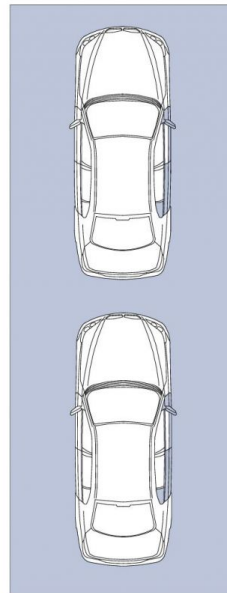
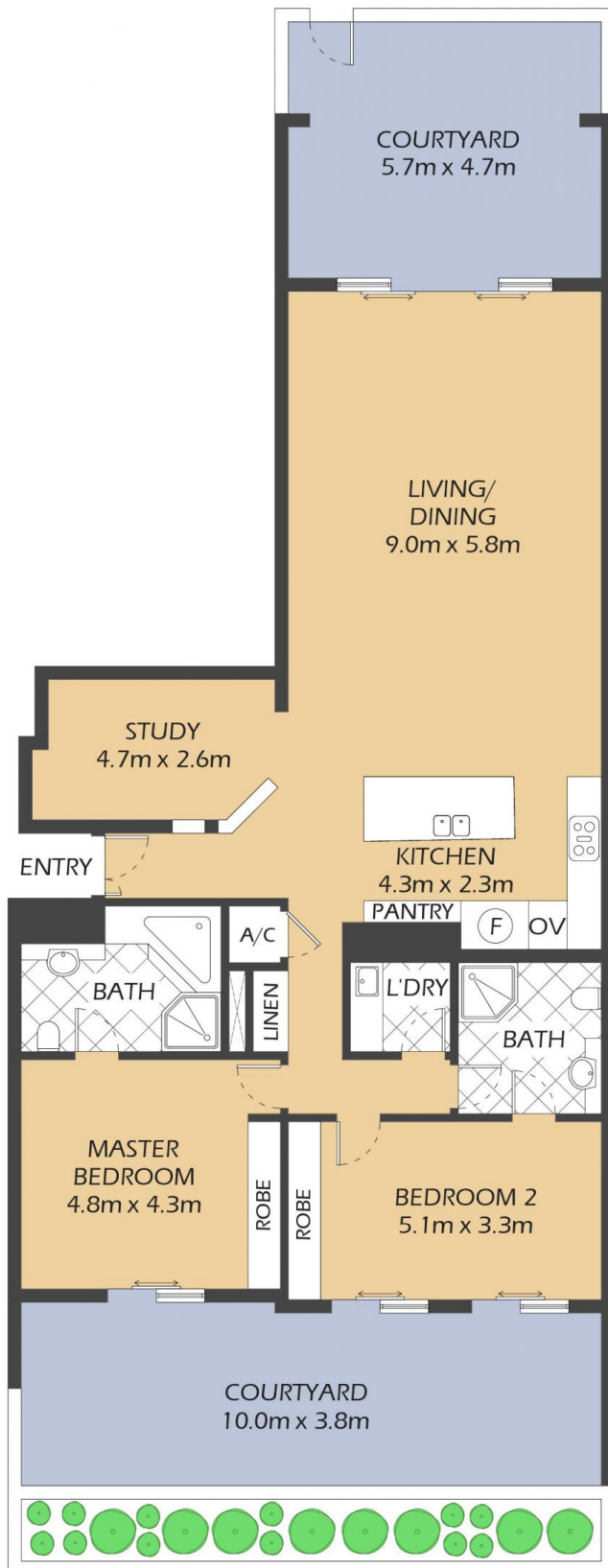
Price : Asking Price \$2,800,000
Building Size : 280 sqm
View : <https://www.balmainrealty.com/1P3497>



Scott Robertson
(02) 9818 8888



Hayden Hedley
(02) 9818 8888



LOCK UP GARAGE
10.0m x 4.0m
(NOT ACTUAL LOCATION)

165/5 Wulumay Close ROZELLE

"The Escarpments" - Balmain Cove

PROPERTY DETAILS

AREA

Total	280sqm
Internal & Courtyards	236sqm
Lock Up Garage	44sqm

OUTGOINGS

Strata	\$2,814p/q
Council	\$338p/q
Water	\$160p/q

INSPECT

As advertised or by private appointment.

1m 2m 5m

* FLOOR PLAN MEASUREMENTS ARE APPROXIMATE AND FOR ILLUSTRATIVE PURPOSES ONLY.

BALMAINRealty

9818 8888
BALMAINREALTY.COM