





6/10 Gow Street Balmain NSW

3  2  1 

Enjoy a wonderfully convenient lifestyle at this bright and airy apartment situated within the tightly held 'Tarrowonga' building tucked away in a whisper quiet waterfront enclave, offering a prime position within walking distance to Balmain village, including cafes, wine bars, bus & ferry transport, parks & schools.

Ticking all the boxes for first home buyers, young families & investors, this well presented apartment offers a generous layout with access to a shared grassed waterfront area taking in spectacular harbour views.

#### PROPERTY FEATURES:

- Quiet corner position taking in a sunny north-westerly aspect
- Spacious open plan living/dining that flows onto the

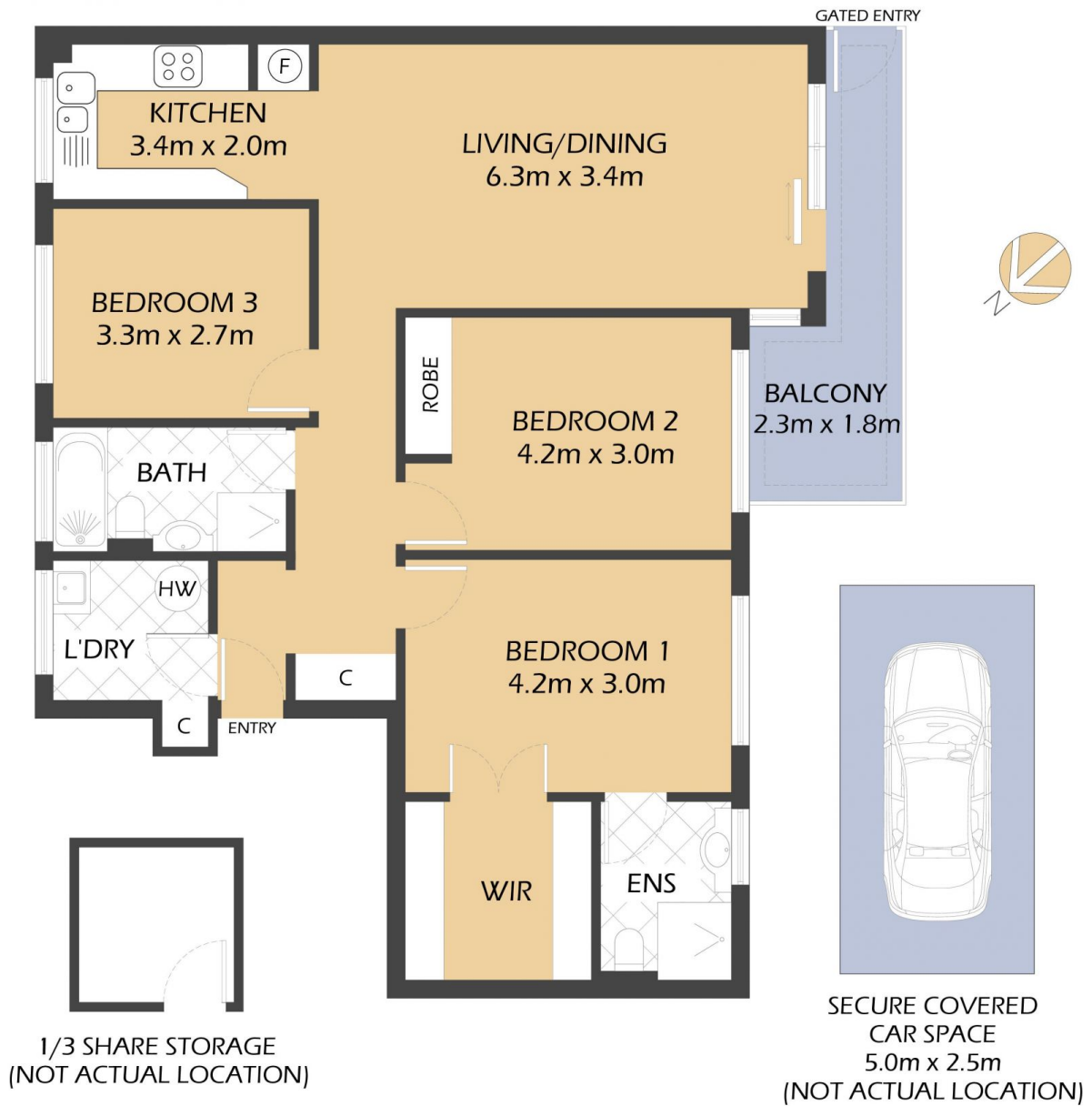
**Price** : SOLD \$1,375,000  
**Building Size** : 116 sqm  
**View** : <https://www.balmainrealty.com/1P3507>



**Scott Robertson**  
(02) 9818 8888



**Hayden Hedley**  
(02) 9818 8888



**6/10 GOW STREET**  
**BALMAIN**  
**"Tarrawonga"**

**PROPERTY DETAILS**

**AREA**

Total	116sqm
Internal & External	102sqm
Parking	14sqm

**OUTGOINGS**

Strata	\$2509p/q
Council	\$309p/q
Water	\$160p/q

\*FLOOR PLAN MEASUREMENTS ARE APPROXIMATE AND FOR ILLUSTRATIVE PURPOSES ONLY.

**BALMAIN**Realty

9818 8888

BALMAINREALTY.COM