



213/120 Terry Street Rozelle NSW

2 2 1

Situated within the award winning 'Union Balmain' complex completed in late 2015, this split-level terrace style apartment situated on the top floor features magnificent north facing light-filled interiors that flow to a sun-filled balcony taking in a private and leafy outlook.

Residents can enjoy access to the exclusive rooftop terrace taking in city skyline & harbour views, with BBQ facilities, communal vegetable garden with the convenience of an on-site gourmet grocer & cafe, barber, day spa, wine shop, and a selection of other fine restaurants.

PROPERTY FEATURES:

- Generous open plan living with high ceilings & skylight that opens onto a sun-drenched balcony that features retractable privacy screens

Price : SOLD
Building Size : 122 sqm
View : <https://www.balmainrealty.com/1P3518>

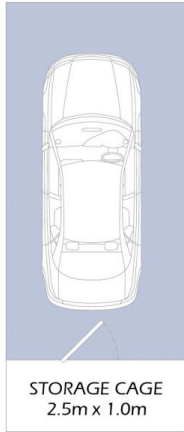


Scott Robertson
(02) 9818 8888



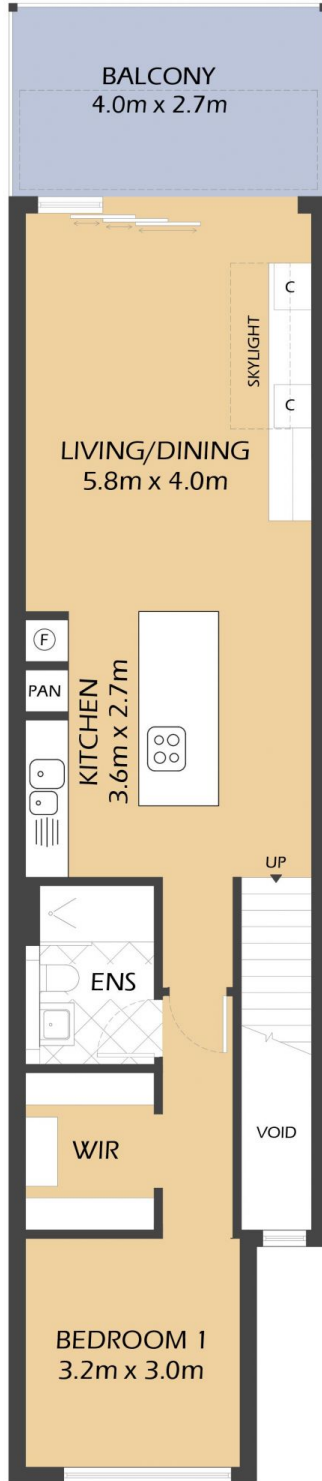
Hayden Hedley
(02) 9818 8888

RETRACTABLE SCREENS

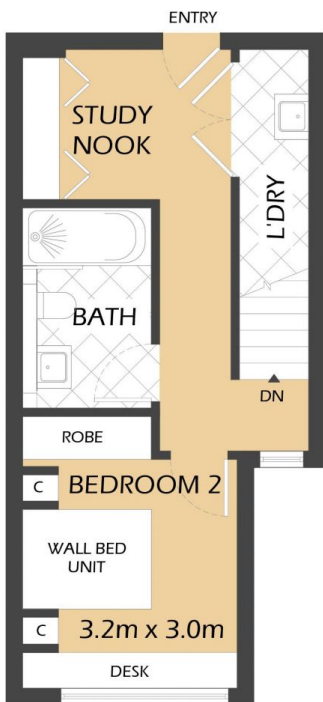


STORAGE CAGE
2.5m x 1.0m

SECURE UNDERCOVER
CAR SPACE
5.0m x 2.5m
(NOT ACTUAL LOCATION)



UPPER LEVEL



LOWER LEVEL



213/120 TERRY STREET ROZELLE "Union Balmain"

PROPERTY DETAILS

AREA

Total	122sqm
Upper Level	75sqm
Lower Level	31sqm
Parking & Storage	16sqm

OUTGOINGS

Strata	\$2455p/q
Council	\$338p/q
Water	\$160p/q

*FLOOR PLAN MEASUREMENTS ARE APPROXIMATE AND FOR ILLUSTRATIVE PURPOSES ONLY.

BALMAINRealty

9818 8888

BALMAINREALTY.COM