



404/1 Warayama Place Rozelle NSW

1 1 1

Offering an elevated top floor position with stunning water views, this oversized apartment features spacious sun-drenched interiors that open onto a covered balcony with a private, leafy outlook over Bridgewater Park.

Situated within the 'Balmain Shores' resort like complex, this location is without a doubt one of the picks on the entire Balmain Peninsula. On the doorstep of the harbour foreshore & Bay Run with neighbourhood cafes & restaurants, pubs, boutique shopping, schools & express city transport only a short stroll away.

PROPERTY FEATURES:

- Spectacular water views from the living & bedroom
- Spacious open plan living areas with light filled interiors that flow seamlessly onto a covered balcony

Price : SOLD \$1,025,000
Building Size : 78 sqm
View : <https://www.balmainrealty.com/1P3568>



Scott Robertson
(02) 9818 8888



Hayden Hedley
(02) 9818 8888

PROPERTY DETAILS

AREA

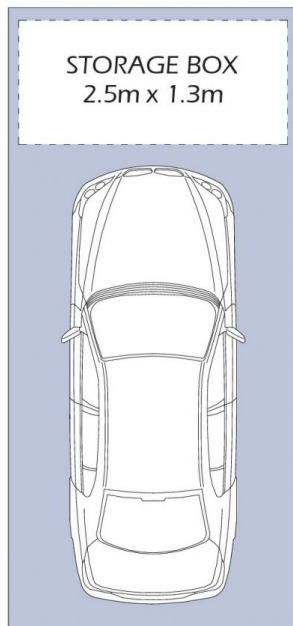
Total	78sqm
Internal	54sqm
Balcony	7sqm
Car Space	17sqm

OUTGOINGS

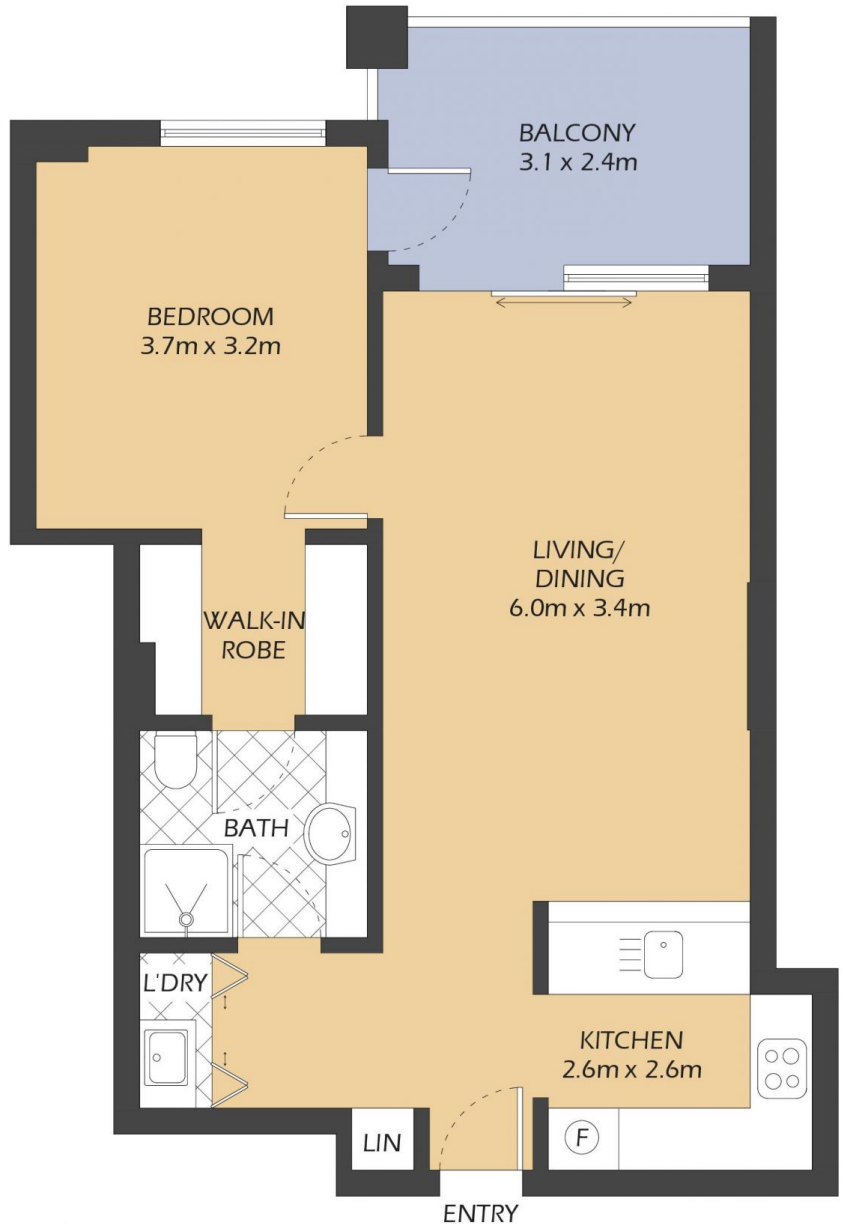
Strata	\$1333p/q
Council	\$338p/q
Water	\$160p/q

INSPECT

As advertised or by private appointment.



SECURE COVERED
CAR SPACE
6.0x2.8m
(NOT ACTUAL
LOCATION)



404/1 WARAYAMA PLACE

ROZELLE

"Regatta" - Balmain Shores

0.5m 1m 2m 5m

* FLOOR PLAN MEASUREMENTS ARE APPROXIMATE AND FOR ILLUSTRATIVE PURPOSES ONLY.

BALMAINRealty

9818 8888
BALMAINREALTY.COM