



110/5 Nagurra Place Rozelle NSW

1 1 1

Contemporary One Bedroom Apartment + Study with Two Courtyards, Parking & Storage Cage

Situated within one of the Balmain Peninsula's most highly sought after complexes is this ultra-modern one bedroom apartment with additional home office/study space features spacious light-filled interiors with high ceilings that flow seamlessly onto a sun-filled north facing courtyard that opens out to manicured gardens and grassed area.

Property Features:

- Terrace style apartment with unique access off a private lobby shared with only one other apartment
- Double frontage with courtyards at either end offers excellent cross flow ventilation and high ceilings throughout with floor to ceiling windows

Price : LEASED! \$790 per week
Building Size : 105 sqm
View : <https://www.balmainrealty.com/1P3590>



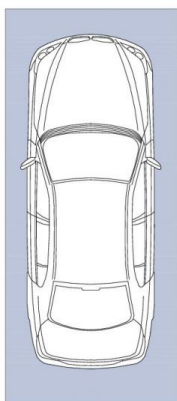
Eli Gallwey
(02) 9818 8888



Suzanne MacMillan
(02) 9818 8888

PROPERTY DETAILS	
AREA	
Total	105sqm
Internal&Courtyards	88sqm
Car Space	13sqm
Storage Cage	4sqm
OUTGOINGS	
Strata	\$1393p/q
Council	\$306p/q
Water	\$179p/q
INSPECT	
As advertised or by private appointment.	

STORAGE
CAGE
2.4m x 1.7m



SECURE COVERED
CAR SPACE
5.5 x 2.4m
(NOT ACTUAL
LOCATION)



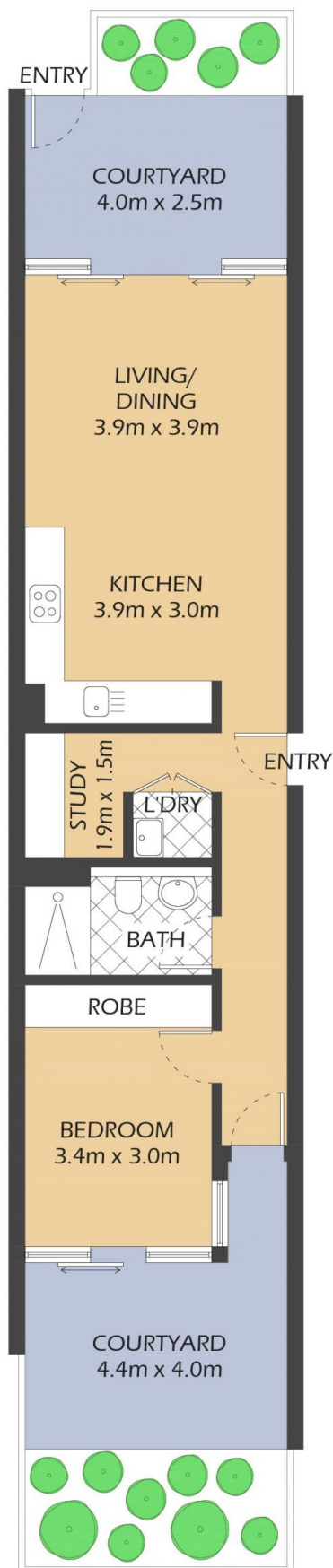
110 /5 NAGURRA PLACE

ROZELLE

"Union Balmain"



* FLOOR PLAN MEASUREMENTS ARE APPROXIMATE AND FOR ILLUSTRATIVE PURPOSES ONLY.



BALMAINRealty

9818 8888
BALMAINREALTY.COM