



15/3 Wulumay Close Rozelle NSW

3 2 2

Set within the tightly held 'Balmain Cove' harbourfront complex and positioned on the absolute waterfront in 'The Landings' building, this exceptional oversized waterfront apartment is bathed in natural northern light and captures elevated and unobstructed views toward Birkenhead Point, Snapper and Spectacle Islands & beyond.

It offers peaceful resort style living with marina facilities for the boating enthusiast, as well as being a short stroll from an array of cafes, restaurants, boutique shopping, local schools, express city transport and an abundance of parks and walkways along the harbour foreshore.

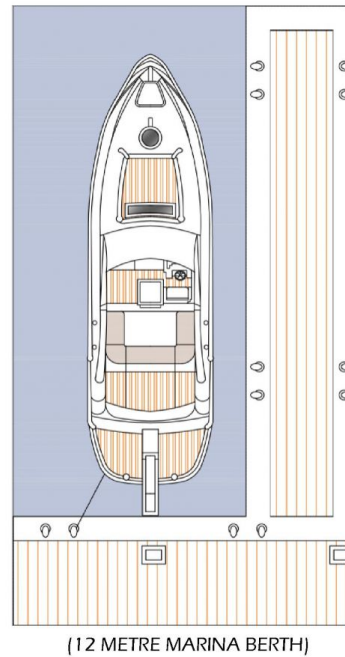
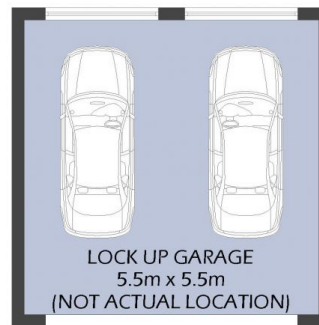
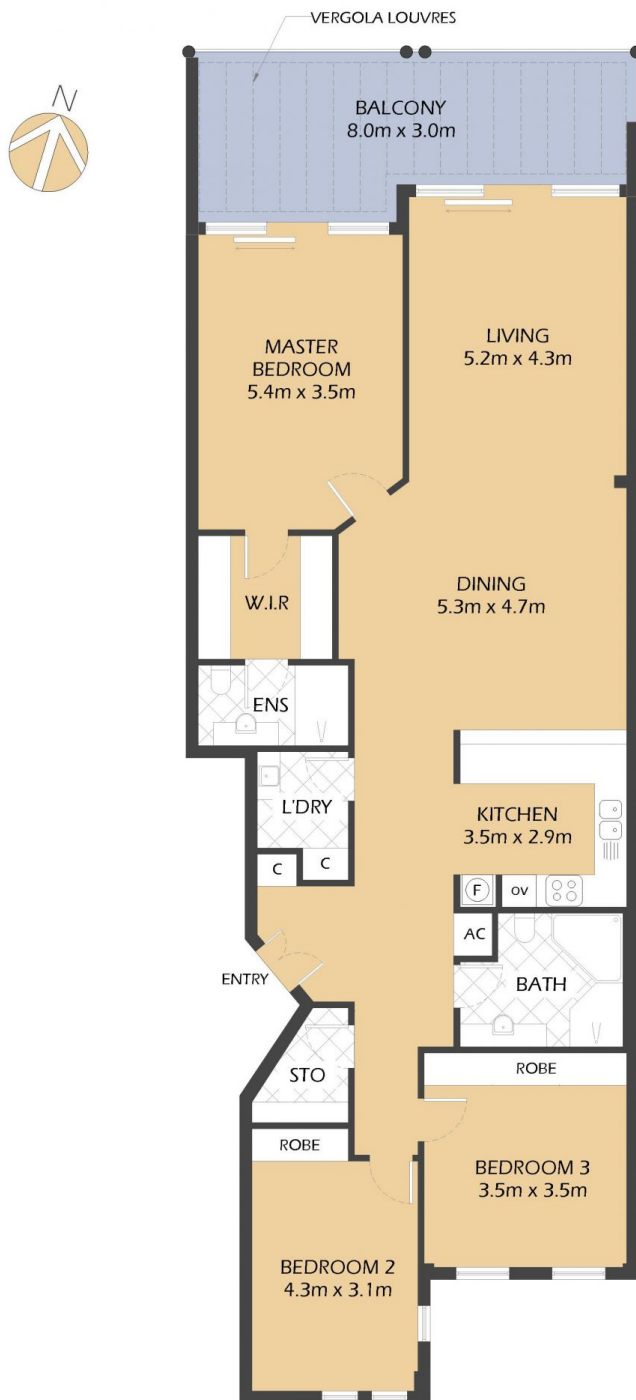
PROPERTY FEATURES:

- Premium top floor position located on the absolute waterfront

Price : SOLD \$4,000,000
Building Size : 195 sqm
View : <https://www.balmainrealty.com/1P3573>



Scott Robertson
(02) 9818 8888



15/3 Wulumay Close
ROZELLE
"The Landings" – Balmain Cove



*FLOOR PLAN MEASUREMENTS ARE APPROXIMATE AND FOR ILLUSTRATIVE PURPOSES ONLY.

PROPERTY DETAILS

AREA

Total	195sqm
Internal & External	163sqm
Lock Up Garage	32sqm

APARTMENT OUTGOINGS

Strata	\$4630p/q
Council	\$338p/q
Water	\$157p/q

MARINA BERTH OUTGOINGS

Strata	\$1,763p/q
Council	\$211p/q

BALMAINRealty

9818 8888

BALMAINREALTY.COM