



**510/11 Warayama Place Rozelle NSW**

1 🏠 1 🚗

Top Floor Waterfront Studio Apartment with Separate Bedroom Area in the Popular 'Balmain Shores' Complex

**Price** : \$560 per week

**View** : <https://www.balmainrealty.com/1P3615>

#### PROPERTY FEATURES:

- Stunning north-easterly water views across Iron Cove Bay
- Spacious open plan living & large balcony looking out over Bridgewater Park
- Bright & sunny top floor position
- Split-system air-conditioning
- Flyscreen to balcony door
- Updated paint & carpet throughout
- Security access with video intercom
- Gourmet kitchen with gas cooking & dishwasher
- Large bedroom area with built-in wardrobes
- Stylish modern bathroom
- Separate internal laundry with clothes dryer



**Eli Gallwey**  
(02) 9818 8888

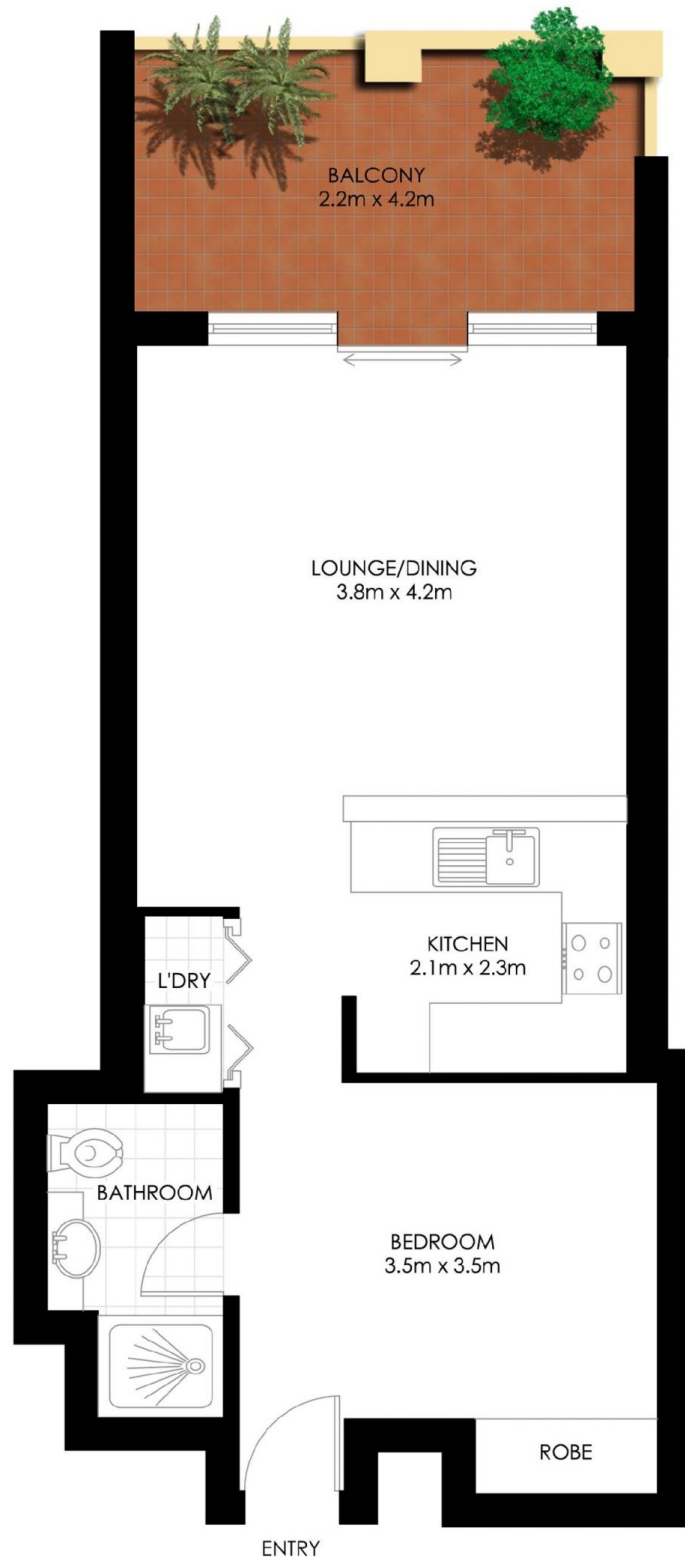


**Jenny Chen-Robertson**  
(02) 9818 8888



SECURE  
COVERED CAR SPACE  
5.5m x 3.2m

(NOT ACTUAL LOCATION)



## ROZELLE 11 WARAYAMA PLACE "North Point" - Balmain Shores

\*PLANS SHOWN ONLY INDICATIVE OF LAYOUT. DIMENSIONS ARE APPROXIMATE.