



226/122 Terry Street Rozelle NSW

2  2  1 

Situated within the award winning 'Union Balmain' complex, this split level terrace style apartment situated on the top floor features magnificent north facing light-filled interiors that flow to a sun-filled balcony.

Residents can enjoy access to the exclusive rooftop terrace taking in city skyline & harbour views, with BBQ facilities, communal vegetable garden with the convenience of an on-site grocer & cafe, barber, day spa, bottle shop, and a selection of other fine restaurants.

PROPERTY FEATURES:

- Open plan living, with high ceilings & skylight, that opens onto a sun-drenched balcony
- Opulent finishes throughout including oak timber flooring, carpet in the bedrooms, LED lighting, ducted

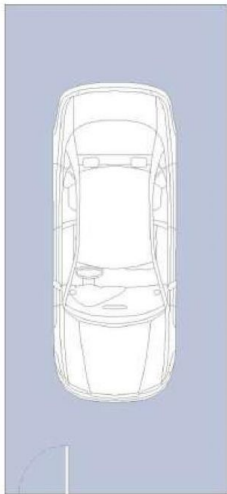
Price : \$1,000 per week
Building Size : 121 sqm
View : <https://www.balmainrealty.com/1P3639>



Eli Gallwey
(02) 9818 8888



Suzanne MacMillan
(02) 9818 8888

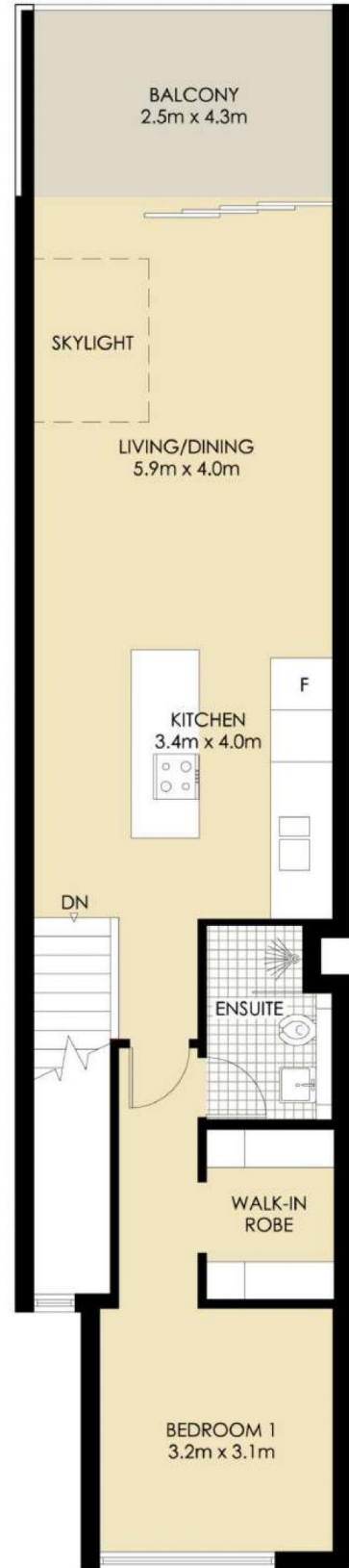


STORAGE CAGE
3.0m x 1.0m

SECURE UNDERCOVER
CAR SPACE



LOWER LEVEL



UPPER LEVEL

ROZELLE

"Union Balmain"



*FLOOR PLAN MEASUREMENTS ARE APPROXIMATE AND FOR ILLUSTRATIVE PURPOSES ONLY.

BALMAINRealty

9818 8888
BALMAINREALTY.COM