



201/30 Warayama Place Rozelle NSW

2 🛏 2 🚿 1 🚗

Situated in the prized 'Balmain Shores' complex, this elevated apartment offers spacious and private interiors that flow onto a 20sqm covered entertainer's balcony taking water glimpses and enjoying a sun-filled north-easterly aspect.

Residents have access to first class resort style amenities including a modern well-equipped gymnasium, heated indoor lap pool, outdoor plunge pool, spa & saunas. It's also on the door step of Bridgewater Park and the popular 'Bay Run' offering over 8kms of walkways/cycleways along the harbour foreshore, and is only a short stroll from local cafes & eateries, Fruitologist and express public transport.

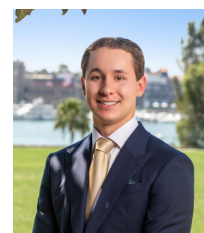
PROPERTY FEATURES:

- Oversized 20sqm entertainer's balcony taking in a

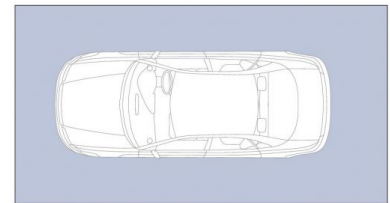
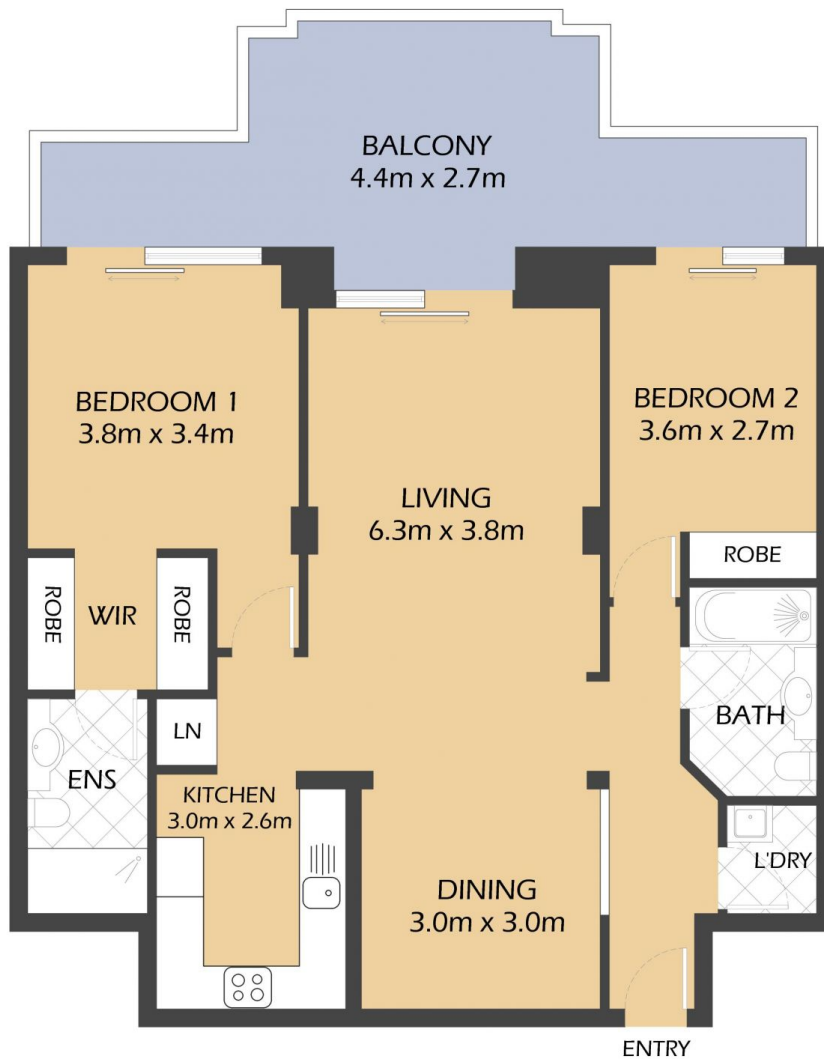
Price : SOLD \$1,650,000
Building Size : 128 sqm
View : <https://www.balmainrealty.com/1P2774>



Scott Robertson
(02) 9818 8888



Nick Van Venrooy
(02) 9818 8888



SECURE UNDERCOVER
CAR SPACE
(NOT ACTUAL LOCATION)

201/30 WARAYAMA PLACE
ROZELLE
"Anchorage" - Balmain Shores



*FLOOR PLAN MEASUREMENTS ARE APPROXIMATE AND FOR ILLUSTRATIVE PURPOSES ONLY.

PROPERTY DETAILS

AREA

Total	128sqm
Internal	93sqm
External	20sqm
Parking	15sqm

OUTGOINGS

Strata	\$1,769p/q
Council	\$353p/q
Water	\$173 p/q

BALMAINRealty

9818 8888
BALMAINREALTY.COM